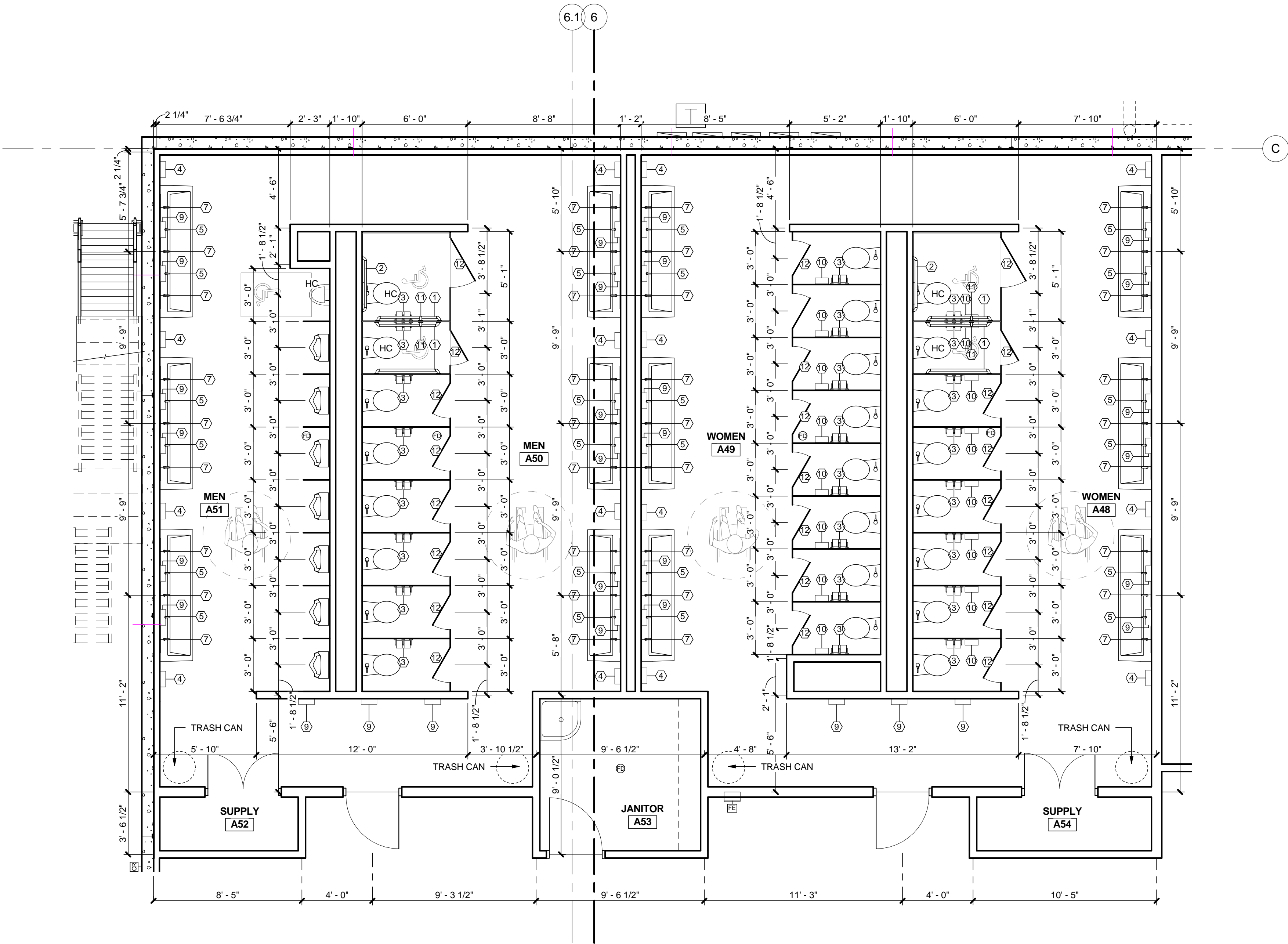


NO. FIXTURE SCHEDULE	
①	HANDICAPPED GRAB BAR - 42"
②	HANDICAPPED GRAB BAR - 36"
③	TOILET TISSUE DISPENSER
④	ELECTRIC HAND DRYER
⑤	SOAP DISPENSER - WITH STATION
⑥	SOAP DISPENSER - WALL MOUNTED - BY OTHERS
⑦	MIRROR - 18" x 36" ON STANDOFFS
⑧	MIRROR - 24" x 36"
⑨	SURFACE MOUNTED PAPER TOWEL DISPENSER
⑩	SANITARY NAPKIN DISPOSAL
⑪	HANDICAP VERTICAL GRAB BAR - 18"
⑫	COAT HOOK - MOUNT AT 48" A.F.F.
⑬	WALL BUMPER (H.C. STALL)
⑭	SOAP DISPENSER - COUNTER MOUNTED
⑮	TOILET PARTITION
⑯	URINAL SCREEN
⑰	HI/LOW DRINKING FOUNTAIN

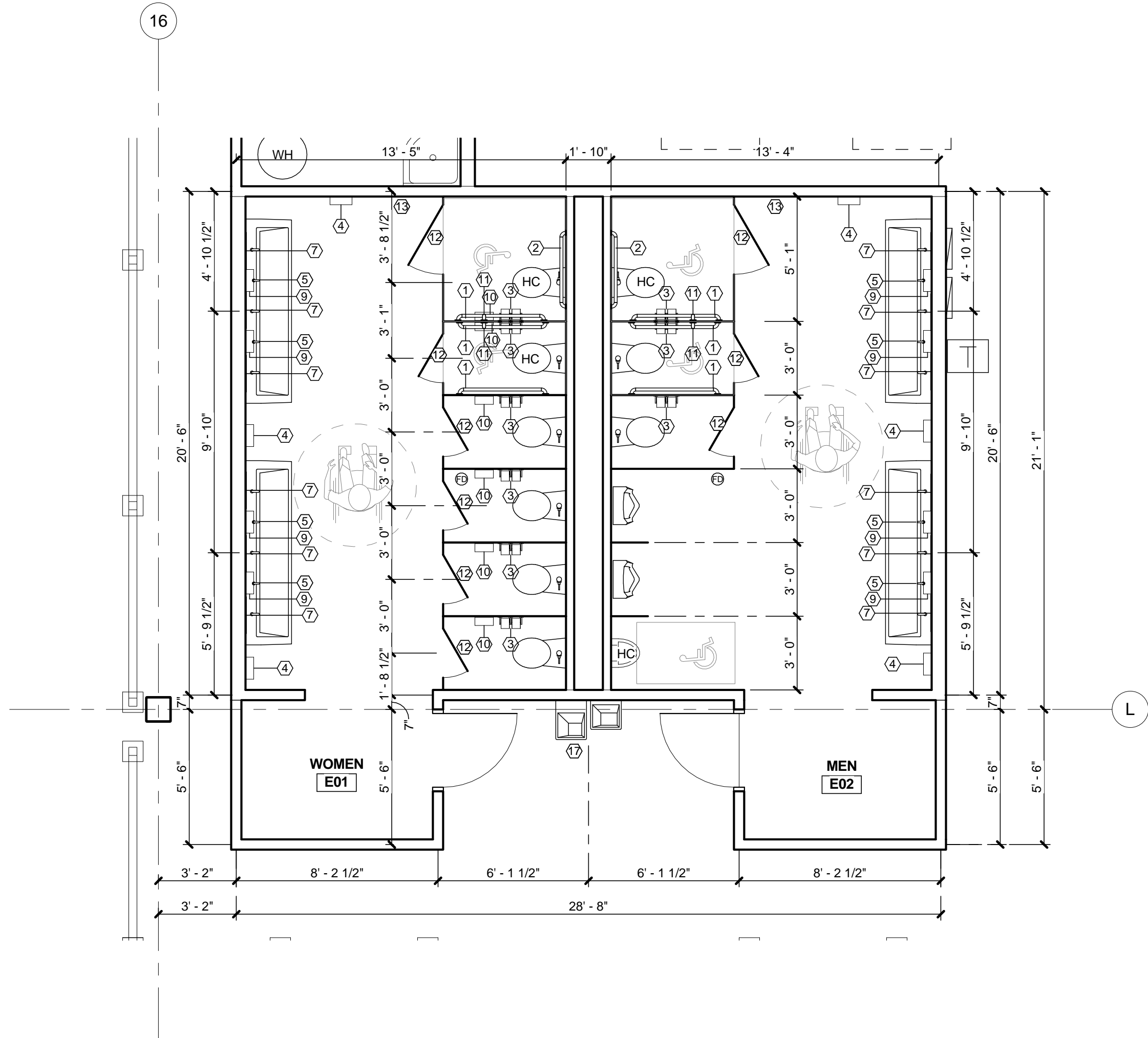
3 RESTROOM ELEV\_TYP WAREHOUSE RESTROOM

1/2" = 1'-0"



2 ENLARGED RESTROOMS A48, A49, A50 + A51

1/4" = 1'-0"



1 ENLARGED RESTROOMS WAREHOUSE

1/4" = 1'-0"



MACGREGOR ASSOCIATES ARCHITECTS

2839 Paces Ferry Road, Suite 500  
Atlanta, Georgia 30339  
T 770.432.9400 F 770.432.9934

SEAL



07/31/13

CONSULTANT

PRINT RECORD

NUMBER	DATE	DESCRIPTION
1	08/09/13	ADDENDUM NO. 1

PROJECT INFORMATION

HomeGoods  
DISTRIBUTION  
CENTER

125 LOGISTICS CENTER PARKWAY  
JEFFERSON, GEORGIA 30549

Be  
HomeGoods  
Happy

THIS DRAWING, AS AN INSTRUMENT OF SERVICE, IS AND SHALL REMAIN THE PROPERTY OF THE DESIGN PROFESSIONAL AND SHALL NOT BE REPRODUCED, PUBLISHED OR USED IN ANY WAY WITHOUT THE PERMISSION OF THE DESIGN PROFESSIONAL.

THE CONTRACTOR SHALL VERIFY ALL DIMENSIONS AND EXISTING CONDITIONS AT THE SITE BEFORE PROCEEDING WITH EACH PHASE OF HIS WORK.  
©Macgregor Associates Architects, Inc. - 1987-2013

DATE	PROJECT NO.
07/30/13	2013-018

SHEET TITLE

ENLARGED  
TOILET PLANS  
AND  
ELEVATIONS

SHEET NUMBER

A-604

FOR CONSTRUCTION