







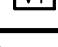






THIS IS A MASTER LEGEND AND NOT ALL SYMBOLS, ETC. ARE NECESSARILY USED ON THE DRAWINGS.

SYMBOL	DESCRIPTION	MANUFACTURER	PART NUMBER
	FIRE ALARM CONTROL PANEL	BOSCH	FPD-7024
	FIRE ALARM ANNUNCIATOR PANEL	BOSCH	FMR-7033
	MULTI-CANDELA HORN/STROBE	SYSTEM SENSOR	P2W
	OUTDOOR HORN/STROBE	SYSTEM SENSOR	P2RK
	MULTI CANDELA STROBE	SYSTEM SENSOR	SW
	MANUAL PULL STATION	BOSCH	FMM-7045-D
	POWER BOOSTER	BOSCH	FPP-RNAC-8A-4C
	MULTI-CANDELA HORN/STROBE CEILING MOUNT	SYSTEM SENSOR	PC2W
	MULTI-CANDELA STROBE CEILING MOUNT	SYSTEM SENSOR	SCW
	SMOKE DETECTOR	BOSCH	D7050
	WATERFLOW ALARM SWITCH	SYSTEM SENSOR	WFD
	CONTROL VALVE TAMPER SWITCH	SYSTEM SENSOR	OSY2/PIV2
	DUCT MOUNTED SMOKE DETECTOR	PROVIDED BY OTHERS	
	REMOTE TEST STATION	PROVIDED BY OTHERS	
	KNOX BOX	PROVIDED BY OTHERS	

NOTE: THIS IS A MASTER LEGEND AND NOT ALL SYMBOLS, ETC. ARE NECESSARILY USED ON THE DRAWINGS.

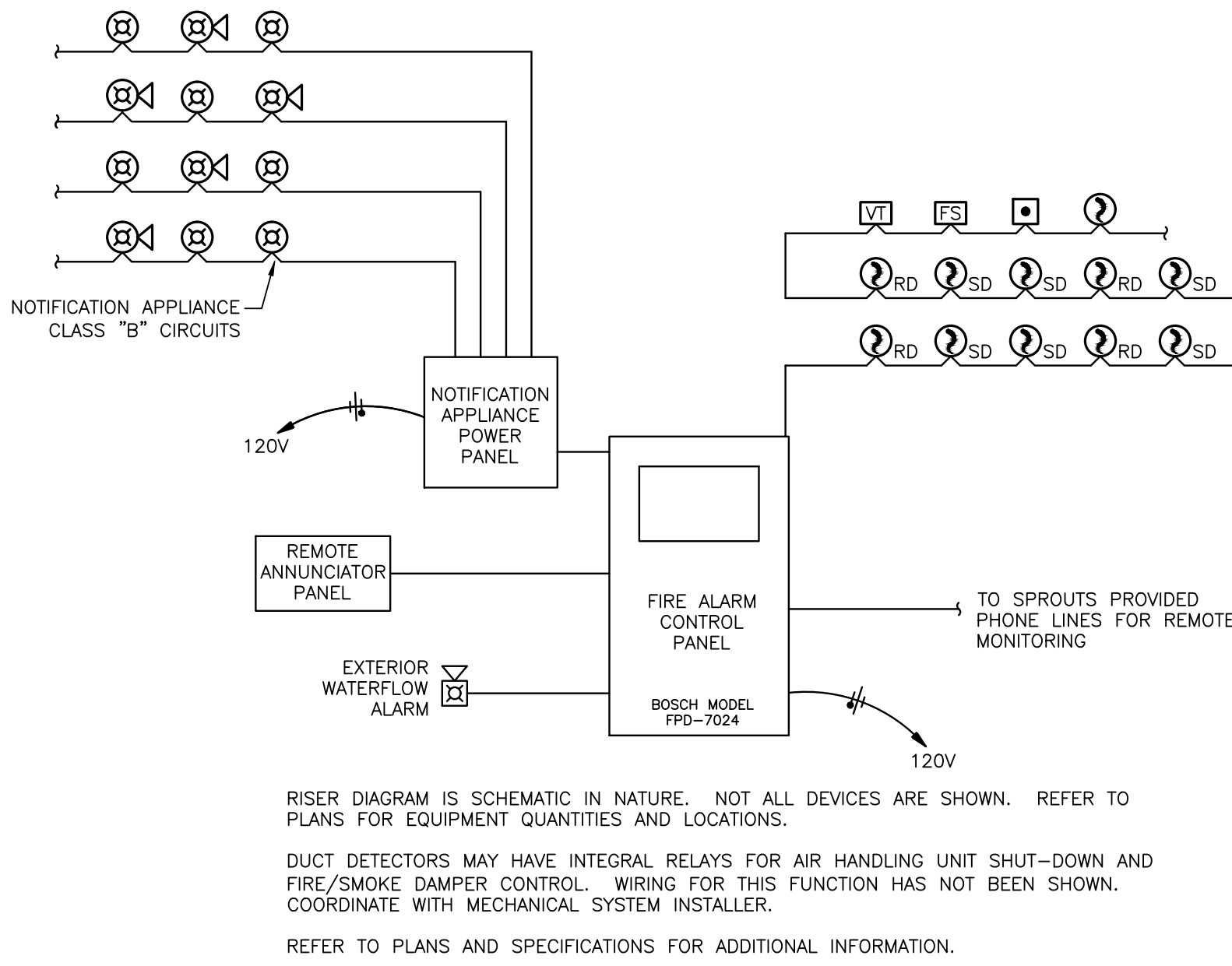
(AFF, AFG, UNLESS NOTED OTHERWISE)

AF	ABOVE FINISHED FLOOR	NC	NOT IN CONTRACT
AF	ABOVE FINISHED GRADE	OC	ON CENTER
CD	CANDELA	PI	POST INDICATOR VALVE
DI	DUCTILE IRON	PR	PROVIDE FURNISH AND INSTALL
ESFR	EARLY SUPPRESSION FAST RESPONSE	PRV	PRESSURE REDUCING VALVE
EXT	EXISTING TO REMAIN	RD	RETURN DUCT
FAC	FIRE HOSE CATCHER	REV	REVISION
FP	FIRE PROTECTION	SD	SUPPLY DUCT
GC	GENERAL CONTRACTOR	SF	SQUARE FEET
GB	GALLONS PER MINUTE	TP	TYPICAL
GM	GULLION BOX	UL	UNDERWRITERS LABORATORIES,
MAX	MAXIMUM	UND	UNLESS NOTED OTHERWISE
MIN	MINIMUM	V	VOLT(S)
N/A	NOT APPLICABLE	WP	WATERPROOF

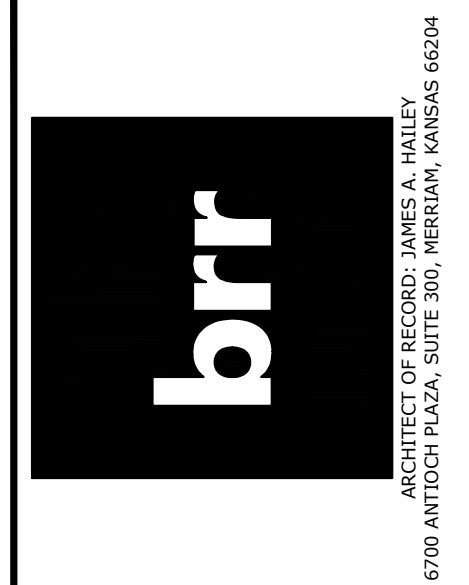
CONTRACTOR SHALL PROVIDE SEISMIC BRACING AS REQUIRED BY BUILDING CODES, LOCAL CODES, AND THE AUTHORITY HAVING JURISDICTION.

1. FIRE ALARM SYSTEM DESIGN, INSTALLATION AND MATERIALS SHALL BE IN ACCORDANCE WITH NFPA 70 AND NFPA 72. SYSTEM SHALL ALSO MEET ALL APPLICABLE BUILDING CODES, FIRE CODES AND THE REQUIREMENTS OF THE AUTHORITY HAVING JURISDICTION AND INSURANCE CARRIER. VERIFY REQUIREMENTS PRIOR TO BID SUBMITTAL.
2. INFORMATION ON CONTRACT DOCUMENTS IS GENERAL INFORMATION AND NOT FOR BID PURPOSES ONLY. PERFORM REQUIRED CALCULATIONS AND COORDINATE WITH OTHER TRADES.
3. DEVIATIONS FROM ENGINEERS LAUREL WILL NOT BE CONSIDERED UNLESS A FORMALLY SUBMITTED RFI IS RECEIVED AND APPROVED.
4. PROVIDE ADDITIONAL MATERIALS AND LABOR REQUIRED DUE TO LACK OF COORDINATION OR TO MEET AUTHORITY HAVING JURISDICTION AND INSURANCE CARRIER REQUIREMENTS AT NO ADDITIONAL COST TO THE OWNER.
5. PROVIDE ALL EQUIPMENT AND LABOR REQUIRED FOR A COMPLETE AND OPERATIONAL FIRE ALARM SYSTEM.
6. PROVIDE AUDIBLE AND VISIBLE NOTIFICATION APPLIANCES AS INDICATED ON THE DRAWINGS.
7. SMOKE DETECTORS SHALL NOT BE LOCATED IN A DIRECT AIR FLOW NOR MORE THAN 3 FEET FROM AN AIR SUPPLY DIFFUSER OR RETURN AIR OPENING.
8. DETECTION SHALL BE FACTORY INSTALLED AND CAPABLE OF SHUTDOWN FOR ALL AIR DISTRIBUTION SYSTEMS, INCLUDING UNITS LESS THAN 1000 CFM. SMOKE DETECTION SHALL TRANSMIT A SUPERVISORY SIGNAL TO THE FACP.
9. FORWARD COMPLETED FIRE ALARM CERTIFICATE OF COMPLETION TO THE OWNER.
10. REFER TO SPECIFICATIONS FOR ADDITIONAL INFORMATION.
11. THE FIRE ALARM CONTROL PANEL (FACP) SHOWN SHALL BE COORDINATED WITH THE AHU PRIOR TO INSTALLATION.

SYSTEM INPUTS			A	B	C	D	E	F
1	MANUAL PULL STATION	•	•	•	•	•	•	•
2	SMOKE DETECTOR – SPOT TYPE	•	•	•	•	•	•	•
3	SMOKE DETECTOR – DUCT MOUNTED	•	•	•	•	•	•	•
4	WATERFLOW ALARM SWITCH	•	•	•	•	•	•	•
5	VALVE TAMPER SWITCH	•	•	•	•	•	•	•
6	FIRE DEPARTMENT KEY BOX TAMPER SWITCH (KNOX BOX)	•	•	•	•	•	•	•
7	SIGNALING LINE OR NOTIFICATION APPLIANCE CIRCUIT – OPEN	•	•	•	•	•	•	•
8	SIGNALING LINE OR NOTIFICATION APPLIANCE CIRCUIT – SHORT	•	•	•	•	•	•	•
9	SIGNALING LINE OR NOTIFICATION APPLIANCE CIRCUIT – GROUND	•	•	•	•	•	•	•



COPYRIGHT NOTICE:
THIS DRAWING WAS PREPARED FOR USE ON A SPECIFIC SITE CONTEMPORANEOUSLY WITH ITS ISSUE DATE AND IT IS NOT SUITABLE FOR USE ON A DIFFERENT PROJECT SITE OR AT A LATER TIME. USE OF THIS DRAWING FOR REFERENCE OR EXAMPLE ON ANOTHER PROJECT REQUIRES THE SERVICES OF PROPERLY LICENSED ARCHITECTS AND ENGINEERS. REPRODUCTION OF THIS DRAWING FOR REUSE ON ANOTHER PROJECT IS NOT AUTHORIZED AND MAY BE CONTRARY TO THE LAW.



SPROUTS FARMERS MARKET
3357 BATTLEGROUND AVE.
GREENSBORO, NC 27410

REVISION:

REV #3 - 07/10/18

CONSULTING ENGINEER

HENDERSON ENGINEERS
8345 LENEVA DRIVE, SUITE 300
LENEVA, NC 28624
TEL (913) 742-5000 FAX (913) 742-5001
WWW.HENDERSONENGINEERS.COM
1750002974
NC CORPORATE NUMBER C-1492
EXPIRES 06/30/19

SPROUTS FARMERS MARKET
Tenant Improvements
FIRE ALARM FLOOR PLAN

DATE: 10-27-2017

DRAWN BY: JR/RD/JC/OF

CHECKED BY: RD/JK/AS/NW

SCALE: AS NOTED

PROJECT NUMBER: 62930803

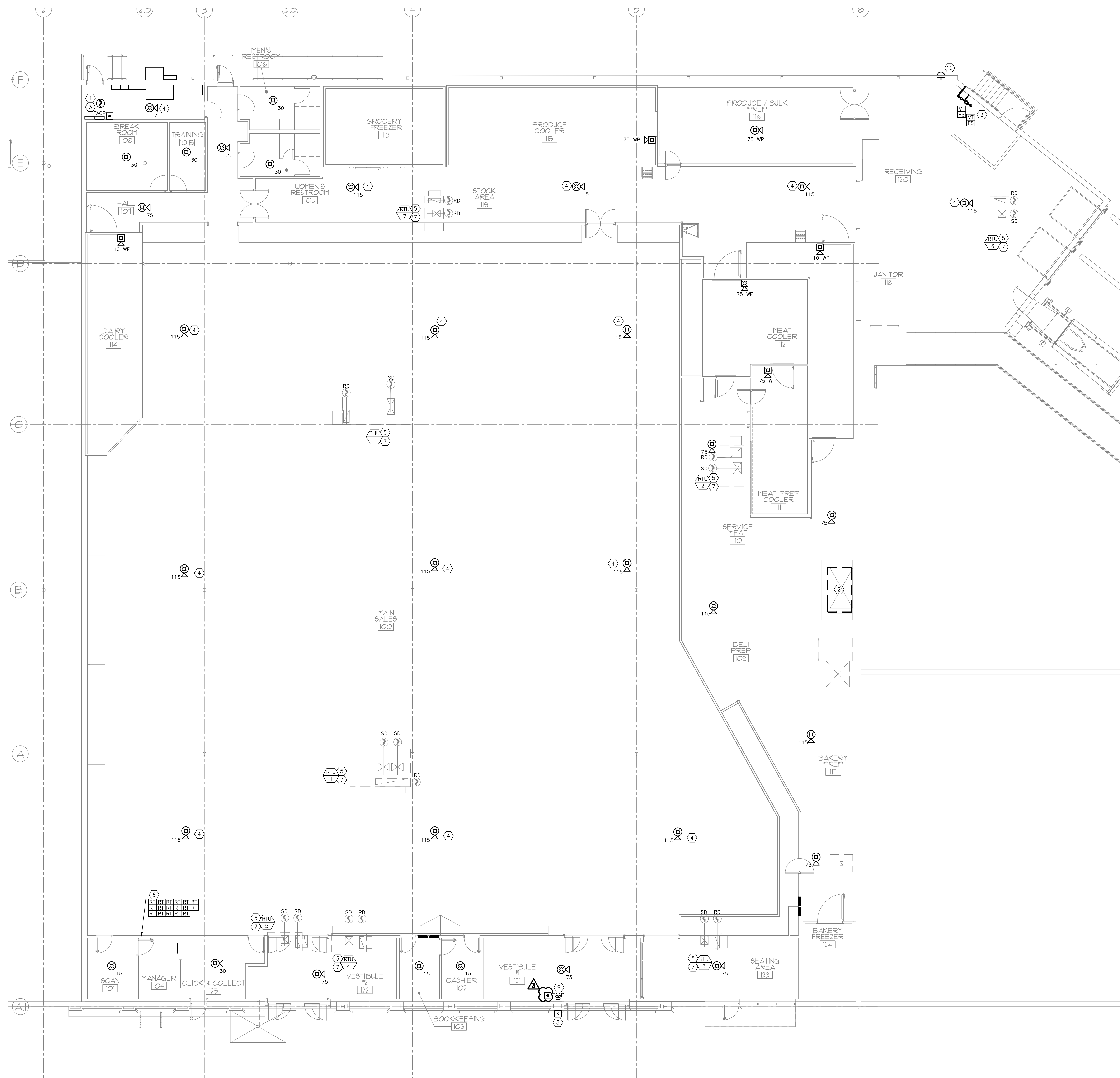
SHEET:

FA2.0

REV:

FIRE ALARM PLAN NOTES:

- 1 FIRE ALARM CONTROL PANEL.
- 2 PROVIDE EQUIPMENT AND CONNECTION(S) REQUIRED TO MONITOR KITCHEN HOOD SUPPRESSION SYSTEM(S).
- 3 CONNECT FIRE SPRINKLER MONITORING DEVICES TO FIRE ALARM SYSTEM. COORDINATE QUANTITY AND LOCATION OF DEVICES WITH FIRE PROTECTION SYSTEMS.
- 4 MOUNT NOTIFICATION APPLIANCE TO BOTTOM OF STRUCTURE OR SUSPENDED AT 30'-0" AFF, WHICHEVER IS LOWER, IN ACCORDANCE WITH NFPA 72.
- 5 PROVIDE NECESSARY EQUIPMENT AND CONNECTIONS REQUIRED TO MONITOR FACTORY INSTALLED DUCT SMOKE DETECTORS BY THE FIRE ALARM SYSTEM. REFER TO MECHANICAL SHEETS FOR AIR HANDLING UNIT AND DUCTWORK LAYOUT AND DETAILS.
- 6 PROVIDE LOW VOLTAGE WIRING FROM DUCT DETECTOR TO MANUFACTURER PROVIDED REMOTE TEST STATION. REMOTE TEST STATIONS SHALL BE LOCATED IN ROOM SHOWN. FINAL LOCATION TO BE COORDINATED WITH ARCHITECT. IF INSTALLED IN WALL, MOUNT REMOTE TEST STATION AT 7'-0" AFF. ALL TEST STATIONS SHALL BE LABELED INDICATING WHICH AIR HANDLING UNIT IT IS ASSOCIATED WITH.
- 7 PROVIDE EQUIPMENT AND CONNECTION(S) REQUIRED FOR GLOBAL SHUTDOWN OF ALL AIR HANDLING UNITS IN THE EVENT OF A GENERAL FIRE ALARM.
- 8 KNOX BOX FOR FIRE DEPARTMENT ACCESS. CONNECT TAMPER SWITCH(ES) TO FIRE ALARM CONTROL PANEL. KNOX BOX PROVIDED BY OTHERS.
- 9 PROVIDE NEW FIRE ALARM ANNUCIATOR PANEL.
- 10 CONNECT EXTERIOR WEATHERPROOF ELECTRIC BELL TO FIRE ALARM SYSTEM. COORDINATE LOCATION WITH THE FIRE DEPARTMENT CONNECTION.

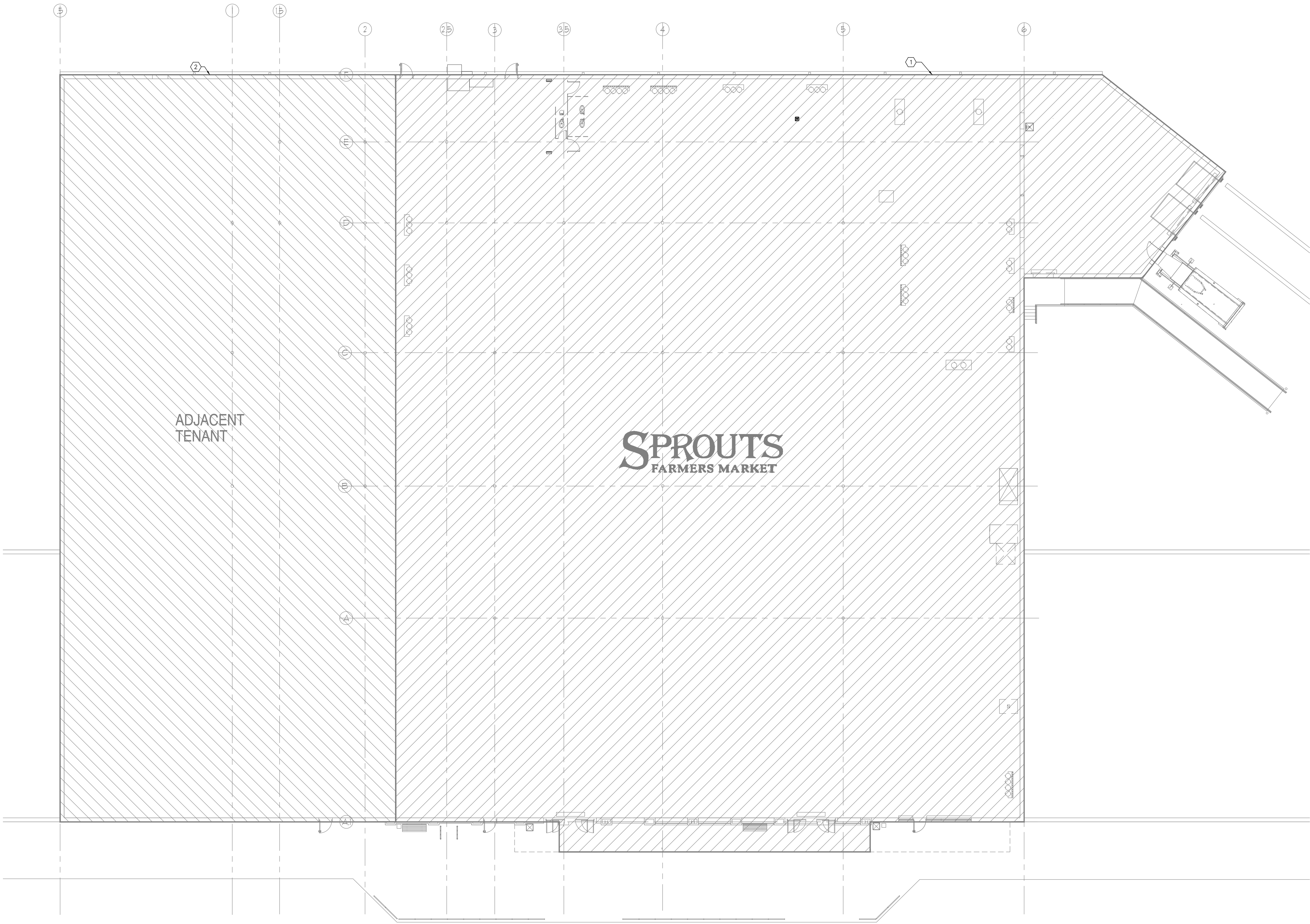


1 FIRE ALARM FLOOR PLAN
SCALE: 1/8"=1'-0"



0 4' 8' 12'
SCALE: 1/8"=1'-0"

J:\Photos\Programs\Special\730002974 Sprouts Farmers Market - Greensboro - NC\01\Fire\730002974 FA3.0 Fire Alarm Plan.dwg, PLOT: 10/19/2017 4:16:13 PM, mcdonalds.cad, 1:1



1 FIRE ALARM DEMOLITION PLAN
SCALE: 1/8"=1'-0"



0 4' 8' 12'
SCALE: 1/8"=1'-0"

EXISTING CONDITIONS WERE TAKEN FROM ORIGINAL DRAWINGS AND MAY NOT REFLECT EXACT "AS-BUILT" CONDITIONS. CONTRACTOR SHALL FIELD VERIFY ALL EXISTING CONDITIONS PRIOR TO SUBMITTING FINAL BIDS. CONTRACTOR SHALL CAREFULLY COORDINATE NEW WORK AND DEMOLITION WITH ALL OTHER DISCIPLINES AND EXISTING CONDITIONS.

EACH SUBCONTRACTOR IS RESPONSIBLE FOR HAVING A THOROUGH KNOWLEDGE OF ALL DRAWINGS AND SPECIFICATIONS IN THEIR RELATED FIELD. THE FAILURE TO ACQUAINT THEMSELVES WITH THIS KNOWLEDGE DOES NOT RELIEVE THE RESPONSIBILITY OF PERFORMING THE WORK PROPERLY. NO ADDITIONAL COMPENSATION SHALL BE ALLOWED BECAUSE OF CONDITIONS THAT OCCUR DUE TO FAILURE TO FAMILIARIZE WORKERS WITH THIS KNOWLEDGE.

- FIRE ALARM DEMOLITION NOTES:**
1. PRIOR TO SUBMITTING BID, CONTRACTOR MUST VISIT THE JOB SITE AND BECOME FULLY ACQUAINTED WITH THE EXISTING CONDITIONS OF THE PROJECT. REVIEW GENERAL NOTES, SPECIFICATIONS AND ALL APPLICABLE DRAWINGS FOR ADDITIONAL REQUIREMENTS THAT MAY NOT BE SPECIFICALLY CALLED OUT IN THIS PORTION OF THE CONSTRUCTION DOCUMENTS. NOTIFY ARCHITECT, ENGINEER OR OWNER, AS DEFINED IN BID DOCUMENTS, OF CONFLICTS OR DISCREPANCIES PRIOR TO SUBMITTING BID. ADDITIONAL COMPENSATION WILL NOT BE PAID FOR LACK OF SUCH DETERMINATION, FAMILIARIZATION, AND/OR ALLOWANCE.
 2. EXISTING CONDITIONS WERE TAKEN FROM ORIGINAL DRAWINGS AND SITE VISITS AND MAY NOT REFLECT ACTUAL "AS-BUILT" CONDITIONS.
 3. COORDINATE NEW WORK AND DEMOLITION WITH OTHER DISCIPLINES AND EXISTING CONDITIONS PRIOR TO CONSTRUCTION.
 4. PERFORM ALL WORK ACCORDING TO THE PHASING SCHEDULE FOR THIS PROJECT. PROVIDE ALL TEMPORARY DESIGN AND/OR CONFIGURATIONS THAT MEET APPLICABLE CODE REQUIREMENTS AS NECESSARY TO CONFORM TO THE REQUIRED CONSTRUCTION PHASING OF THE PROJECT.
 5. ONLY THE PORTIONS OF THE BUILDING AFFECTED BY THE SCOPE OF THE PROJECT HAVE BEEN SHOWN. INFORMATION SHOWN AS EXISTING TO REMAIN IS NOT BEING MODIFIED AS A PART OF THIS PROJECT.
 6. ALL WORK SHALL BE PERFORMED SO AS TO NOT INTERRUPT SERVICE. THE CONTRACTOR SHALL PROPERLY NOTIFY THE LANDLORD, THE LEASER AND ADJACENT TENANTS A MINIMUM OF 48 HOURS IN ADVANCE BEFORE PROCEEDING WITH THIS WORK.
 7. EQUIPMENT AND CONDUIT TO BE REMOVED SHALL BE KEPT FOR REINSTALLATION DURING THE CONSTRUCTION PHASE WHEN POSSIBLE AND/OR INDICATED ON THE DRAWINGS. AVOID DAMAGE TO SALVAGED EQUIPMENT AND CONDUIT DURING DEMOLITION PHASE. PROPERLY DISPOSE OF WIRING AND MATERIAL THAT ARE REMOVED AND ARE NOT REQUESTED TO BE SALVAGED BY THE OWNER.
 8. REMOVE ALL UNUSED AND DEMOLISHED EQUIPMENT AND ASSOCIATED MATERIALS FROM SITE. ABANDONING UNUSED PORTIONS WILL NOT BE ACCEPTABLE.
 9. AVOID DAMAGING EXISTING SURFACES AND EQUIPMENT TO REMAIN. REPAIR DAMAGE CAUSED DURING WORK AT NO EXTRA COST TO THE OWNER.
 10. PATCH ALL OPENINGS IN AREAS THAT REMAIN TO MATCH ADJACENT SURFACES AFTER EXISTING EQUIPMENT IS REMOVED AND VACATED.
 11. FIRE ALARM SYSTEM(S) NOT ASSOCIATED WITH THE DEMOLITION SHALL BE LEFT IN SERVICE AS APPLICABLE.

- FIRE ALARM DEMOLITION PLAN NOTES:**
- 1 REMOVE ALL FIRE ALARM EQUIPMENT AND WIRING NOT INTENDED FOR REUSE. REFERENCE FA2 FOR NEW WORK IN THIS AREA.
 - 2 DEMO OF ADJACENT TENANT TO BE BY OTHERS, NOT INCLUDED IN THIS CONTRACT.

62930803

COPYRIGHT NOTICE:
THIS DRAWING WAS PREPARED FOR USE ON A SPECIFIC SITE CONTEMPORANEOUSLY WITH ITS ISSUE DATE AND IT IS NOT SUITABLE FOR USE ON A DIFFERENT PROJECT SITE OR AT A LATER TIME. USE OF THIS DRAWING FOR REFERENCE OR EXAMPLE ON ANOTHER PROJECT REQUIRES THE SERVICES OF PROPERLY LICENSED ARCHITECTS AND ENGINEERS. REPRODUCTION OF THIS DRAWING FOR REUSE ON ANOTHER PROJECT IS NOT AUTHORIZED AND MAY BE CONTRARY TO THE LAW.



ARCHITECT OF RECORD: JAMES A. WALLEY
6700 ANNESTOWN AVENUE, SUITE 201, GREENSBORO, NC 27409



SPROUTS FARMERS MARKET
3357 BATTLEGROUND AVE.
GREENSBORO, NC 27410

REVISION:

CONSULTING ENGINEER



HENDERSON ENGINEERS
8345 LENEVA DRIVE, SUITE 300
LENEVA, NC 28624
TEL (913) 742-5000 FAX (913) 742-5001
WWW.HENDERSONENGINEERS.COM
1750002974
NC CORPORATE NUMBER C-1492
EXPIRES 06/30/18

THIS DOCUMENT IS RELEASED FOR THE PURPOSE OF PRELIMINARY SUBMITTAL ONLY. R. LANHAM LICENSE # 021712

IT IS NOT TO BE USED FOR CONSTRUCTION PURPOSES.

SPROUTS FARMERS MARKET
Tenant Improvements

FIRE ALARM DEMOLITION PLAN

DATE: 10-27-2017

DRAWN BY: JR/RD/JC/OF

CHECKED BY: RD/JK/AS/NW

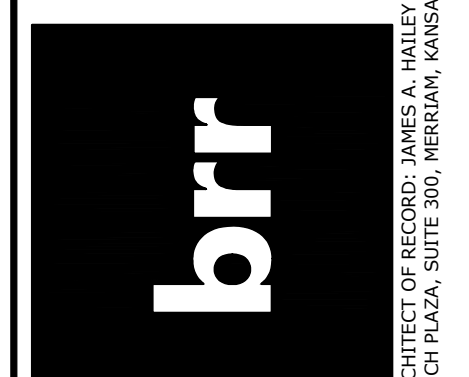
SCALE: AS NOTED

PROJECT NUMBER: 62930803

SHEET: FA3.0

REV:

COPYRIGHT NOTICE:
THIS DRAWING WAS PREPARED FOR USE ON A SPECIFIC SITE. IT IS NOT TO BE REPRODUCED OR COPIED IN ANY MANNER WITHOUT THE WRITTEN PERMISSION OF THE ARCHITECT. ANY REUSE OF THIS DRAWING FOR ANY OTHER PROJECT WITHOUT THE WRITTEN PERMISSION OF THE ARCHITECT IS A VIOLATION OF THE ARCHITECT'S PROFESSIONAL ETHICS AND MAY BE CONSIDERED A VIOLATION OF THE LAW.



ARCHITECT OF RECORD: JAMES A. WALLEY
6700 ANTONIO DRIVE, SUITE 201, GREENSBORO, NC 27409

SPROUTS FARMERS MARKET
3357 BATTLEGROUND AVE.
GREENSBORO, NC 27410

REVISION:
REV 03 - 07/10/18

CONSULTING ENGINEER
HENDERSON ENGINEERS
8345 LENEVA DRIVE, SUITE 300
LENEVA, NC 28644
TEL (919) 742-5000 FAX (919) 742-5001
WWW.HENDERSONENGINEERS.COM
1750002874
NC EXPIRATION NUMBER C-1492
EXPIRES 06/30/19

SPROUTS FARMERS MARKET
Tenant Improvements
FIRE PROTECTION PLAN

DATE: 10-27-2017
DRAWN BY: JR/RD/JC/OF
CHECKED BY: RD/JKA/NN
SCALE: AS NOTED
PROJECT NUMBER: 62930803
SHEET: FP1.0

REV:

PROTECTION CRITERIA LEGEND BASED ON 2010 NFPA 13				
OCCUPANCY CLASSIFICATION	DENSITY	HOSE ALLOWANCE (GPM)	MAXIMUM SPRINKLER SPACING (SQ FT)	DESIGN BASIS
STOCK/RECEIVING AREA (RACK STORAGE)	0.26/2000 SQ FT OR ENTIRE AREA	500	100	RACK STORAGE; CLASS I-III COMMODITIES THAT ARE STORED ON RACKS TO 15'-0" MAXIMUM, 4'-0" AISLE, NON-ENCAPSULATED, WITHOUT IN-RACK SPRINKLERS, TABLE 16.2.1.3.2, FIGURE 16.2.1.3.2(c), CURVE G, WITH HIGH TEMPERATURE SPRINKLERS, AND APPLY FIGURE 16.2.1.3.4.1
RESTROOMS/BREAKROOMS/OFFICES (LIGHT HAZARD)	0.10/1500 SQ FT	100	225	LIGHT HAZARD; 13.11.2.3.2 AND TABLE 11.2.3.1.2
SALES FLOOR (MISCELLANEOUS STORAGE, ORDINARY HAZARD GROUP 2 DESIGN CURVE)	0.20/1500 SQ FT	250	130	CLASS I-III ON RACKS TO 12'-0", OH2 DESIGN CURVE, TABLE 13.2.1 AND FIGURE 13.2.1
COOLERS/FREEZERS (MISCELLANEOUS STORAGE, ORDINARY HAZARD GROUP 2 DESIGN CURVE)	0.20/ENTIRE AREA	250	130	CLASS I-III ON RACKS TO 12'-0", OH2 DESIGN CURVE, TABLE 13.2.1 AND FIGURE 13.2.1

SYMBOL LEGEND						
SYMBOL	SIZE	FINISH	STYLE	TEMP	K-FACTOR	
○	3/4"	BRASS	UPRIGHT	INT	8.0	
●	3/4"	BRASS	UPRIGHT	INT	8.0	
●	1/2"	WHITE	RECESSED	ORD	5.6	
●	1"	WHITE	DRY PENDENT	INT	5.6	
●	1/2"	WHITE	RECESSED	HIGH	5.6	
●	1/2"	BRASS	INT. PENDENT	INT	5.6	

NOTES:
1. PROVIDE SPRINKLERS WITH OPERATING TEMPERATURES IN ACCORDANCE WITH NFPA 13 FOR MAXIMUM ANTICIPATED TEMPERATURES.

FIRE SPRINKLER SYMBOLS

NOTE: THIS IS A MASTER LEGEND AND NOT ALL SYMBOLS, ETC. ARE NECESSARILY USED ON THE DRAWINGS.

PIPING

NEW FIRE SPRINKLER PIPE
EXISTING FIRE SPRINKLER PIPE
NEW CONNECTION
HANGER
TRAPEZE HANGER
RISER NIPPLE/DROP NIPPLE
CAP/PLUG

ANNOTATION

① FIRE SPRINKLER PLAN CALLOUT
② CONNECTION POINT OF NEW WORK TO EXISTING
③ DETAIL REFERENCE: UPPER NUMBER INDICATES DETAIL NUMBER LOWER NUMBER INDICATES SHEET NUMBER
④ SECTION CUT DESIGNATION

ABBREVIATIONS

AFG	ABOVE FINISHED GRADE	OC	NOT IN CONTRACT
AFG	ABOVE FINISHED GRADE	OC	ON CENTER
CD	CANDIDA	PI	COST INDICATOR VALVE
DI	DUCTILE IRON	PIV	PROVIDE FURNISH AND INSTALL
ESFR	EARLY SUPPRESSION FAST RESPONSE	RD	PRESSURE REDUCING VALVE
ETR	EXISTING TO REMAIN	RD	RETURN DUCT
FHC	FIRE HOSE CABINET	RDV	REVISION
FP	FIRE PROTECTION	SD	SUPPLY DUCT
GC	GENERAL CONTRACTOR	SF	SQUARE FEET
GPM	GALLONS PER MINUTE	UL	UNDERWRITERS LABORATORIES, INC.
JB	JUNCTION BOX	UNO	UNLESS NOTED OTHERWISE
MAX	MAXIMUM	V	VOLTS
MIN	MINIMUM	WP	WEATHERPROOF
N/A	NOT APPLICABLE		

FIRE SPRINKLER GENERAL NOTES:

- SPRINKLER SYSTEM DESIGN, INSTALLATION AND MATERIALS SHALL BE IN ACCORDANCE WITH NFPA 13 AND NFPA 24. SYSTEM SHALL ALSO MEET ALL APPLICABLE BUILDING CODES, FIRE CODES AND THE REQUIREMENTS OF THE AUTHORITY HAVING JURISDICTION AND INSURANCE CARRIER. VERIFY REQUIREMENTS PRIOR TO BID SUBMITTAL.
- INFORMATION ON CONTRACT DOCUMENTS IS GENERAL INFORMATION AND FOR BID PURPOSES ONLY. SYSTEM SHALL BE REQUIRED CALCULATIONS AND COORDINATE WITH OTHER TRADES.
- PROVIDE ADDITIONAL MATERIALS AND LABOR REQUIRED DUE TO LACK OF COORDINATION AND TO MEET AUTHORITY HAVING JURISDICTION AND INSURANCE CARRIER REQUIREMENTS AT NO ADDITIONAL COST TO THE OWNER.
- COORDINATE PIPE ROUTING NEAR ELECTRICAL EQUIPMENT IN ACCORDANCE WITH NFPA 70 REQUIREMENTS. DO NOT ROUTE MAIN PIPING THROUGH ELECTRICAL ROOMS OR OVER PANELS.
- COORDINATE SPRINKLER TEMPERATURES NEAR HEAT-PRODUCING SOURCES IN ACCORDANCE WITH NFPA 13.
- COORDINATE SPRINKLER SYSTEM MODIFICATIONS TO MINIMIZE SYSTEM IMPAIRMENT. PROVIDE FIRE WATCH AND INTERIM FIRE PROTECTION MEASURES WHERE REQUIRED BY THE AUTHORITY HAVING JURISDICTION, INSURANCE CARRIER OR OWNER.
- REMOVE ALL ABANDONED PIPING, FITTINGS, HANGERS, ETC.
- FORWARD COMPLETED CONTRACTOR MATERIAL TEST CERTIFICATES TO THE OWNER.
- REFER TO SPECIFICATIONS FOR ADDITIONAL REQUIREMENTS.
- DO NOT ROUTE SPRINKLER PIPING UNDER SKYLIGHTS.
- SHOULD PROTECTION TO ANY PORTION OF THE BUILDING BE INTERRUPTED FOR A PERIOD THAT EXCEEDS A SINGLE 8 HOUR PERIOD WHILE THE FIRE ALARM IS ON TEST, TENANT SHALL INSTITUTE A FIRE WATCH OR OTHER APPROVED MEASURES FROM LANDLORD OR JURISDICTION HAVING AUTHORITY.
- ALL WORK ASSOCIATED WITH THE EXISTING FIRE SPRINKLER SYSTEM AND ANY MODIFICATIONS TO THAT SYSTEM MUST BE COORDINATED WITH THE LANDLORD.
- MODIFY EXISTING SPRINKLER SYSTEM, RELOCATE AND/OR PROVIDE ADDITIONAL SPRINKLERS, PIPING, HANGERS, ETC. COORDINATE WITH WALLS, CEILINGS, LIGHTS, DIFFUSERS, STRUCTURE, OBSTRUCTIONS, ETC., IN AREAS AFFECTED BY SCOPE OF WORK.

FIRE SPRINKLER PLAN NOTES:

- FIRE SPRINKLER SERVICE ENTRANCE, RISER AND NOTIFICATION DEVICE. REFERENCE DETAIL 1-FP2.0.
- PROVIDE DRY PENDENT TYPE SPRINKLERS WITHIN COOLER/FREEZERS. REFER TO SPECIFICATIONS AND DETAILS FOR ADDITIONAL INFORMATION. COORDINATE EXACT LOCATION OF SPRINKLER AT COOLERS/FREEZERS WITH LIGHTS, EVAPORATORS AND OTHER OBSTRUCTIONS. NOTE THAT FINAL LIGHT AND EVAPORATOR LOCATIONS MAY DIFFER FROM THOSE SHOWN ON PLANS. REFERENCE 5/6-FP2.0 FOR INSTALLATION.
- DO NOT ROUTE SPRINKLER PIPING ABOVE ELECTRICAL PANELS.
- PROVIDE AUXILIARY DRAIN IN ACCORDANCE WITH NFPA 13.
- PROVIDE SPRINKLER PROTECTION AT TRASH COMPACTOR OPENING. REFERENCE 7-FP2.0 FOR INSTALLATION.
- PROVIDE PIPE SUPPORTS IN ACCORDANCE WITH NFPA 13. REFERENCE 2/3/4-FP2.0.
- ROUTE PIPE ABOVE ROOF HATCH.
- SPRINKLER PIPING SHALL BE INSTALLED TO ALLOW FOR INSTALLATION OF DUCTWORK.
- COORDINATE SPRINKLER SYSTEM WITH OTHER TRADES. INSTALL PIPING AS HIGH AS POSSIBLE AND ABOVE BOTTOM CHORD OF JOISTS.
- COORDINATE SPRINKLER DEFLECTOR WITH DUCTWORK TO MAINTAIN MINIMUM 24" CLEARANCE.
- PROVIDE HIGH TEMPERATURE SPRINKLERS NEAR HIGH TEMPERATURE EQUIPMENT IN ACCORDANCE WITH NFPA 13.
- NON-COMBUSTIBLE CANOPY WITH NO STORAGE PERMITTED BELOW. SPRINKLERS NOT REQUIRED PER 8.15.7.2 AND 8.15.7.3 OF 2013 NFPA 13.
- DO NOT ROUTE SPRINKLER PIPING UNDER SKYLIGHTS.
- COORDINATE PIPE ROUTING OF NEW MAINS TO ADJACENT SPACES. TENANT SHALL COORDINATE CONNECTION AND ADJUSTMENTS TO SYSTEM AS REQUIRED PER NFPA AND LOCAL JURISDICTIONAL REQUIREMENTS.
- TENANT TO PROVIDE FIRE SPRINKLER SYSTEM PER NFPA 13 AND ANY REQUIREMENTS INCLUDING BUT NOT LIMITED TO SPRINKLERS, PIPING, ETC.

NOTE: KEEP ALL SPRINKLER PIPING IN ALL AREAS THROUGH THE STRUCTURAL MEMBERS AS POSSIBLE. BEFORE SPRINKLER PIPING INSTALLATION COORDINATE PIPE LOCATION/ROUTING WITH OTHER TRADES.

NOTE: COORDINATE SPRINKLER LOCATIONS WITH OTHER TRADES TO AVOID OBSTRUCTION TO SPRINKLER DISCHARGE. INSTALLATION SHALL COMPLY WITH NFPA 13 AND AHJ REQUIREMENTS.

EACH SUBCONTRACTOR IS RESPONSIBLE FOR HAVING A THOROUGH KNOWLEDGE OF ALL DRAWINGS AND SPECIFICATIONS IN THEIR RELATED FIELD. THE FAILURE TO ACQUAINT THEMSELVES WITH THIS KNOWLEDGE DOES NOT RELIEVE THE RESPONSIBILITY OF PERFORMING THE WORK PROPERLY. NO ADDITIONAL COMPENSATION SHALL BE ALLOWED BECAUSE OF CONDITIONS THAT OCCUR DUE TO FAILURE TO FAMILIARIZE WORKERS WITH THIS KNOWLEDGE.

1 FIRE PROTECTION PLAN

SCALE: 1/8"=1'-0"

0 4' 8' 12'
SCALE: 1/8"=1'-0"

NOTE:

FIRE SPRINKLER DRAWINGS ARE DEFERRED SUBMITTALS. THE CONTRACTOR SHALL SUBMIT FULL INSTALLATION DRAWINGS TO THE CITY FOR APPROVAL PRIOR TO INSTALLATION.

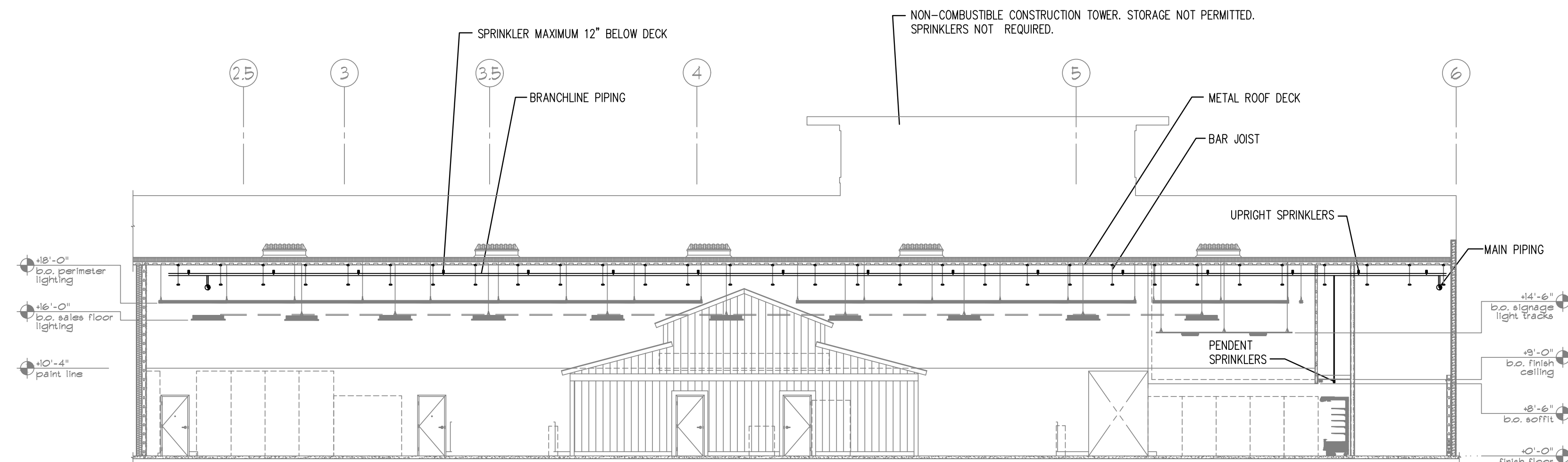
HYDRAULIC DESIGN	
REMOTE AREA #1	SYSTEM #1
SPRINKLERS CALCULATED	22
SPRINKLER DENSITY REQ'D	0.28 GPM/SQ FT
AREA OF DISCHARGE	2000 SQ FT
HOSE ALLOWANCE	500 GPM
SYSTEM FLOW DEMAND	1201.0 GPM
SYSTEM PRESSURE DEMAND	54.8 PSI
SYSTEM SAFETY FACTOR	0.4 PSI
*SALES FLOOR AREA CALCULATED AT STOCKROOM DENSITY FOR WIRE CAGE SCENARIO	

FIRE SPRINKLER DEMOLITION NOTES:

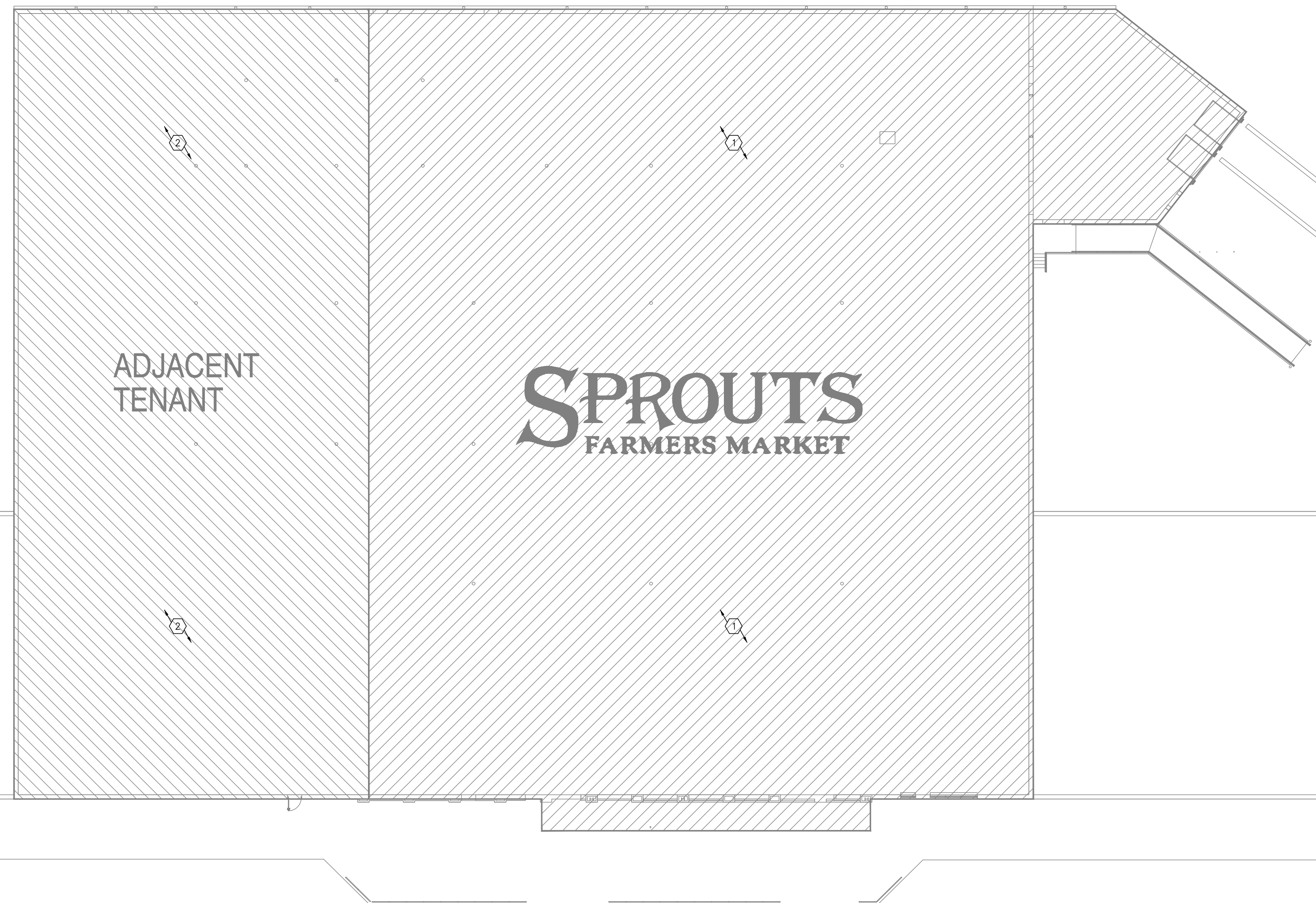
1. PRIOR TO SUBMITTING BID, VISIT THE JOB SITE AND BECOME FULLY ACQUAINTED WITH THE EXISTING CONDITIONS OF THE PROJECT. REVIEW THE GENERAL NOTES, SPECIFICATIONS AND OTHER DRAWINGS FOR ADDITIONAL REQUIREMENTS WHICH MAY NOT BE SPECIFICALLY CALLED OUT IN THIS PORTION OF THE CONSTRUCTION DOCUMENTS. NOTIFY ARCHITECT, ENGINEER AND/OR OWNER OF CONFLICTS OR DISCREPANCIES PRIOR TO SUBMISSION OF BID.
2. EXISTING CONDITIONS WERE TAKEN FROM ORIGINAL DRAWINGS AND SITE VISITS AND MAY NOT REFLECT EXACT "AS-BUILT" CONDITIONS. FIELD VERIFY EXISTING CONDITIONS PRIOR TO SUBMITTING FINAL BIDS. COORDINATE NEW WORK AND DEMOLITION WITH OTHER DISCIPLINES AND EXISTING CONDITIONS PRIOR TO CONSTRUCTION.
3. OWNER RETAINS RIGHTS OF SALVAGE FOR EQUIPMENT AND FIXTURES TO BE REMOVED. COORDINATE WITH THE OWNER THE EQUIPMENT AND FIXTURES TO BE SALVAGED AND THE LOCATION FOR STORAGE. AVOID DAMAGE TO EQUIPMENT, FIXTURES AND DEVICES DURING DEMOLITION WORK AND DURING TRANSPORT TO OWNER'S DESIGNATED STORAGE LOCATION.
4. REMOVE ITEMS SHOWN HEAVY LINED AND/OR CROSSHATCHED AND/OR NOTED TO BE REMOVED.
5. PERFORM ALL WORK ACCORDING TO THE PHASING SCHEDULE FOR THIS PROJECT. PROVIDE ALL TEMPORARY DESIGN AND/OR CONFIGURATIONS THAT MEET APPLICABLE CODE REQUIREMENTS AS NECESSARY TO CONFORM TO THE REQUIRED CONSTRUCTION PHASING OF THE PROJECT.
6. ONLY THE PORTIONS OF THE BUILDING AFFECTED BY THE SCOPE OF THE PROJECT HAVE BEEN SHOWN. INFORMATION SHOWN AS EXISTING TO REMAIN IS NOT BEING MODIFIED AS A PART OF THIS PROJECT.
7. ALL WORK SHALL BE PERFORMED SO AS TO NOT INTERRUPT SERVICE. THE CONTRACTOR SHALL PROPERLY NOTIFY THE BUILDING OWNER, LANDLORD, THE LEASER AND ADJACENT TENANTS AS APPLICABLE A MINIMUM OF 48 HOURS IN ADVANCE BEFORE PROCEEDING WITH THIS WORK.
8. REMOVE ALL UNUSED AND DEMOLISHED EQUIPMENT AND ASSOCIATED MATERIALS FROM SITE. ABANDONING UNUSED PORTIONS WILL NOT BE ACCEPTABLE.
9. AVOID DAMAGING EXISTING SURFACES AND EQUIPMENT TO REMAIN FOR NEW INSTALLATION. REPAIR ANY DAMAGE CAUSED DURING WORK AT NO EXTRA COST TO THE OWNER.
10. SEAL ALL PENETRATIONS THROUGH FLOORS, WALLS, CEILINGS AND ROOFS WHERE FIRE SPRINKLER COMPONENTS ARE REMOVED AND WHERE THE EXISTING PENETRATION IS NOT USED FOR THE NEW INSTALLATION. REPAIR SURFACES TO MATCH ADJACENT AREAS.
11. FIRE SPRINKLER SYSTEM(S) NOT ASSOCIATED WITH THE DEMOLITION SHALL BE LEFT IN SERVICE AS APPLICABLE.
12. VERIFY THAT EXISTING EQUIPMENT TO REMAIN IS OPERATING PROPERLY. NOTIFY THE ARCHITECT, ENGINEER AND/OR OWNER OF ANY DAMAGED AND/OR MALFUNCTIONING COMPONENTS.
13. ALL SYSTEMS TO BE LEFT IN SERVICE PRIOR TO THE END OF EACH WORKDAY.

FIRE SPRINKLER PLAN NOTES:

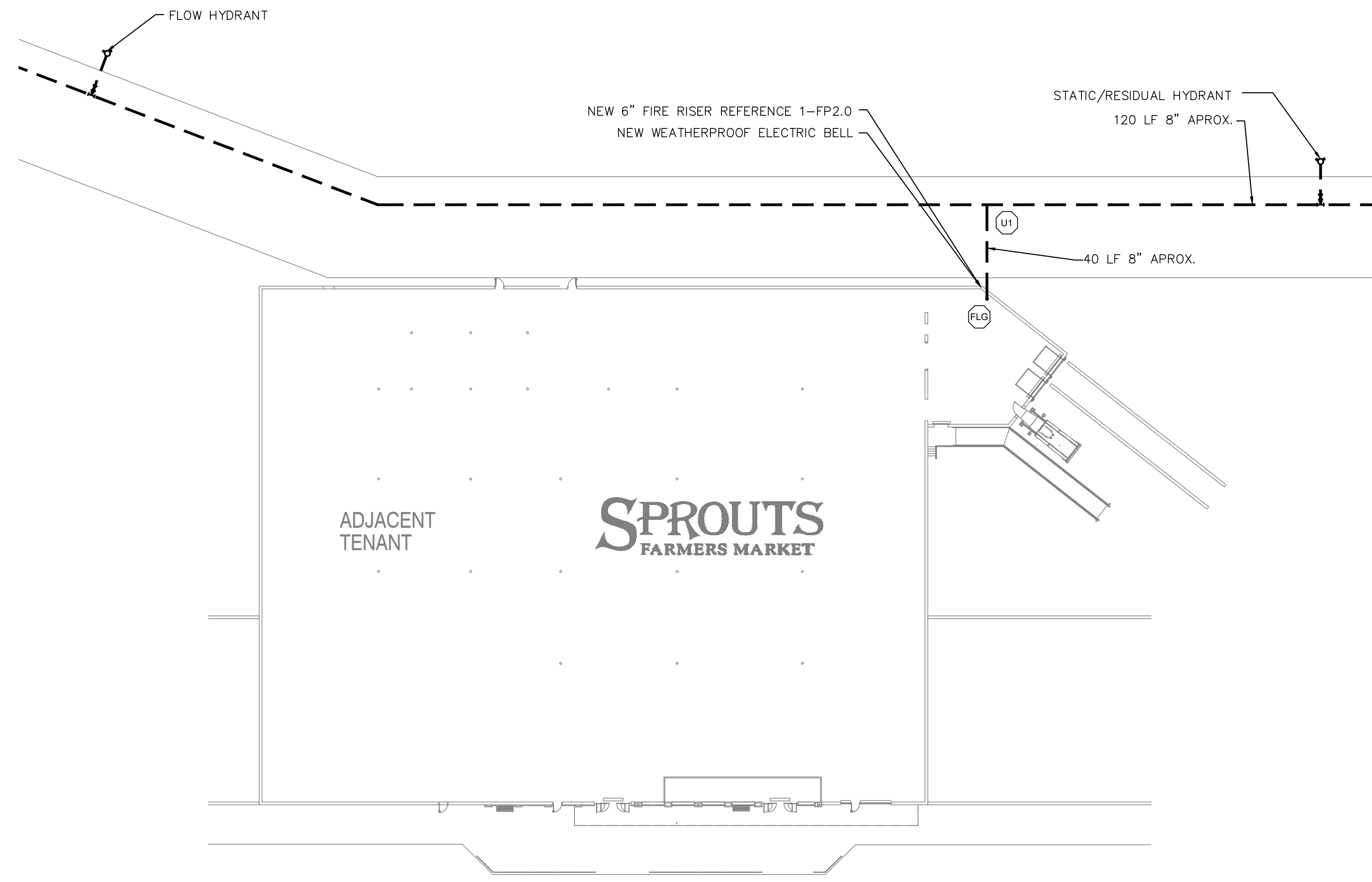
1. REMOVE ALL FIRE SPRINKLER SYSTEM NOT INTENDED FOR REUSE. IN HATCHED AREA. REFERENCE FP1.0 FOR NEW WORK IN THIS AREA. REFERENCE FP2.0 FOR FIRE RISER MODIFICATION.
2. LANDLORD SHALL COORDINATE DEMO AND NEW WORK TO MAINTAIN PROTECTION IN ACCORDANCE WITH NFPA 13 AND AHJ REQUIREMENTS. REMOVE ALL PIPING THROUGH NEW DEMISING WALL AND CAP OUTLETS.



3 SECTION ELEVATION
NO SCALE



2 FIRE PROTECTION DEMOLITION PLAN
NO SCALE



1 SITE PLAN
NO SCALE

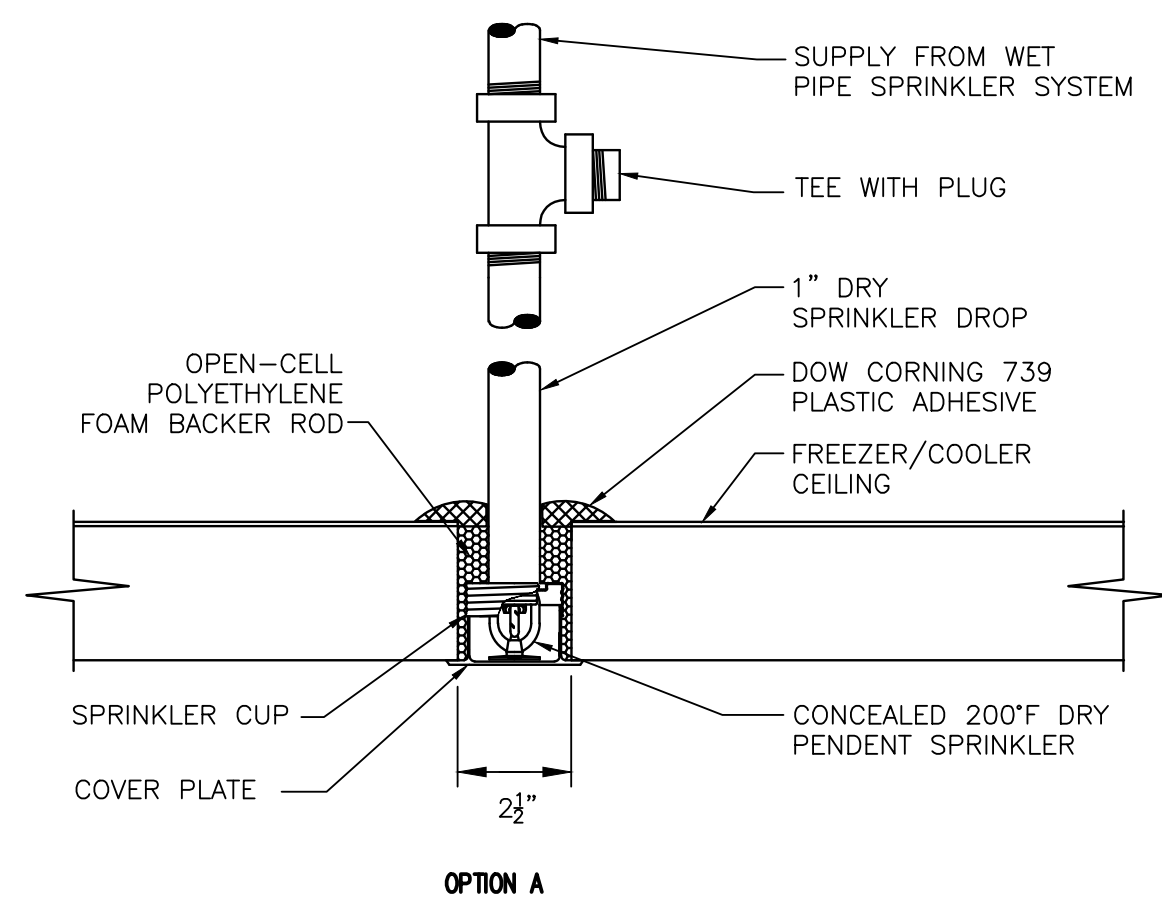
UNDERGROUND PIPING SHOWN FOR
HYDRAULIC CALCULATION PURPOSES ONLY.

WATER SUPPLY INFORMATION:
WATER FLOW TEST INFORMATION PROVIDED BY:
CITY OF GREENSBORO - WATER RESOURCES DEPARTMENT

FLOW TEST DATE: 07/19/2017
TIME: 9:00 AM
STATIC PRESSURE: 71 PSI
RESIDUAL PRESSURE: 65 PSI
WATER FLOW: 1,125 GPM

OPTION "A" INSTALLATION PROCEDURE

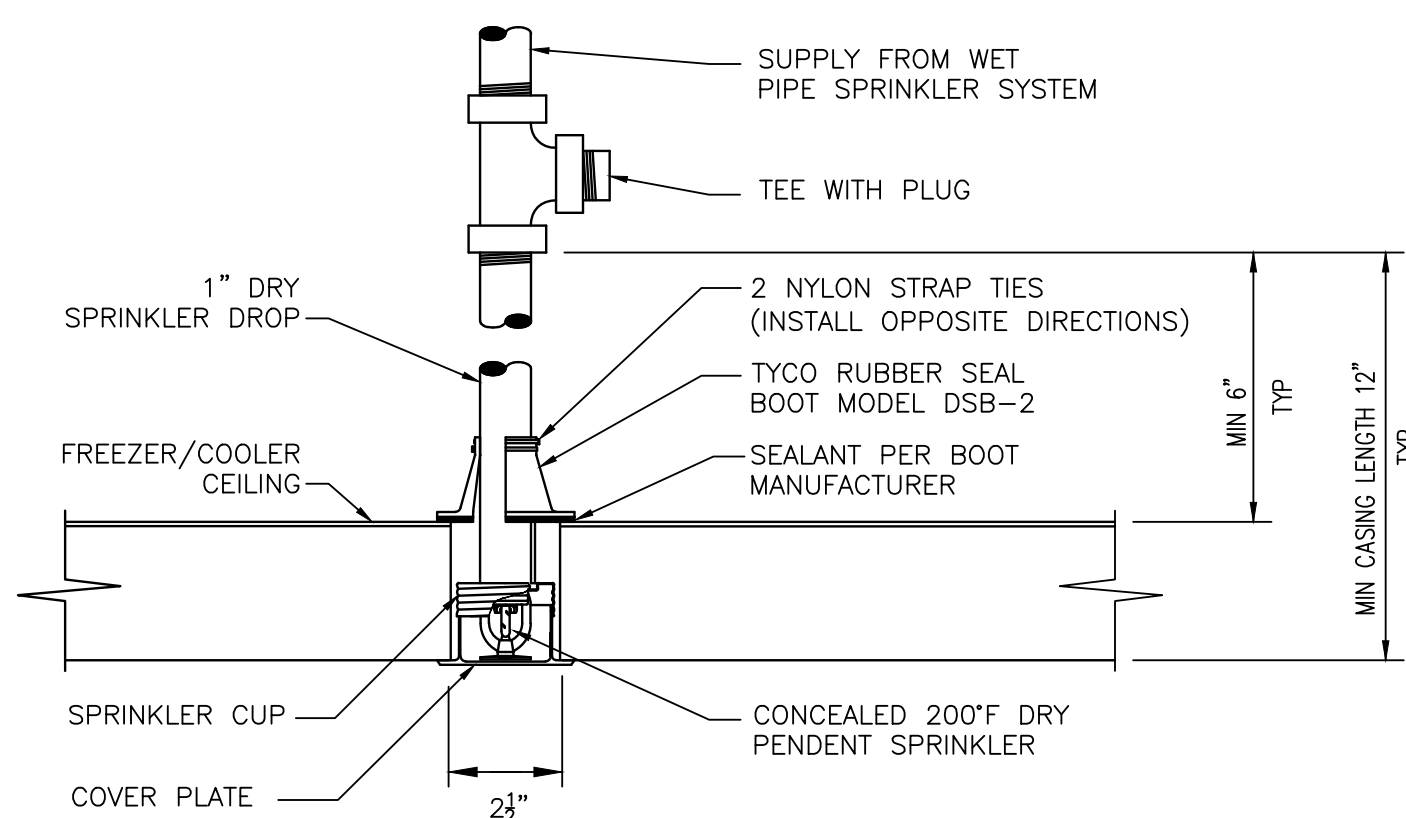
1. CORE DRILL 2 1/2" DIAMETER HOLE IN THE FREEZER/COOLER INSULATED CEILING PANEL. LOCATE HOLE AND REQUIRED SPRINKLER PROTECTION IN ACCORDANCE WITH NFPA 13 OBSTRUCTION CRITERIA (SSP TYPE SPRINKLERS). MAINTAIN 6" CLEARANCE FROM COOLER SEAMS.
2. INSTALL DRY PENDENT SPRINKLER PER MANUFACTURERS INSTALLATION REQUIREMENTS.
3. COMPLETELY FILL ANNULAR CEILING OPENING BETWEEN THE ESCUTCHEON AND TOP OF CEILING PANEL WITH OPEN-CELL POLYETHYLENE FOAM BACKER ROD. EXPANDED FOAM IS NOT PERMITTED.
4. INJECT DOW CORNING 739 PLASTIC ADHESIVE SEALANT INTO AND AROUND THE TOP OF THE FREEZER/COOLER CEILING CORE OPENING IN ACCORDANCE WITH SEALANT MANUFACTURERS INSTRUCTIONS.



OPTION A

OPTION "B" INSTALLATION PROCEDURE

1. CORE DRILL 2 1/2" DIAMETER HOLE IN THE FREEZER/COOLER INSULATED CEILING PANEL FROM BELOW. LOCATE HOLE AND REQUIRED SPRINKLER PROTECTION IN ACCORDANCE WITH NFPA 13 OBSTRUCTION CRITERIA (SSP TYPE SPRINKLERS). MAINTAIN 6" CLEARANCE FROM COOLER SEAMS.
2. INSTALL TYCO DRY PENDENT SPRINKLER PER MANUFACTURERS INSTALLATION REQUIREMENTS. INSERT BOOT PRIOR TO MAKE-UP WITH PIPING.
3. COMPLETELY SEAL INTERFACE BETWEEN BOOT FLANGE AND TOP OF FREEZER/COOLER PANEL WITH ADHESIVE PROVIDED WITH BOOT IN ACCORDANCE WITH MANUFACTURERS INSTRUCTIONS.
4. APPLY STRAP TIES ON BOOT AROUND DRY SPRINKLER BARREL PER MANUFACTURERS INSTRUCTIONS.

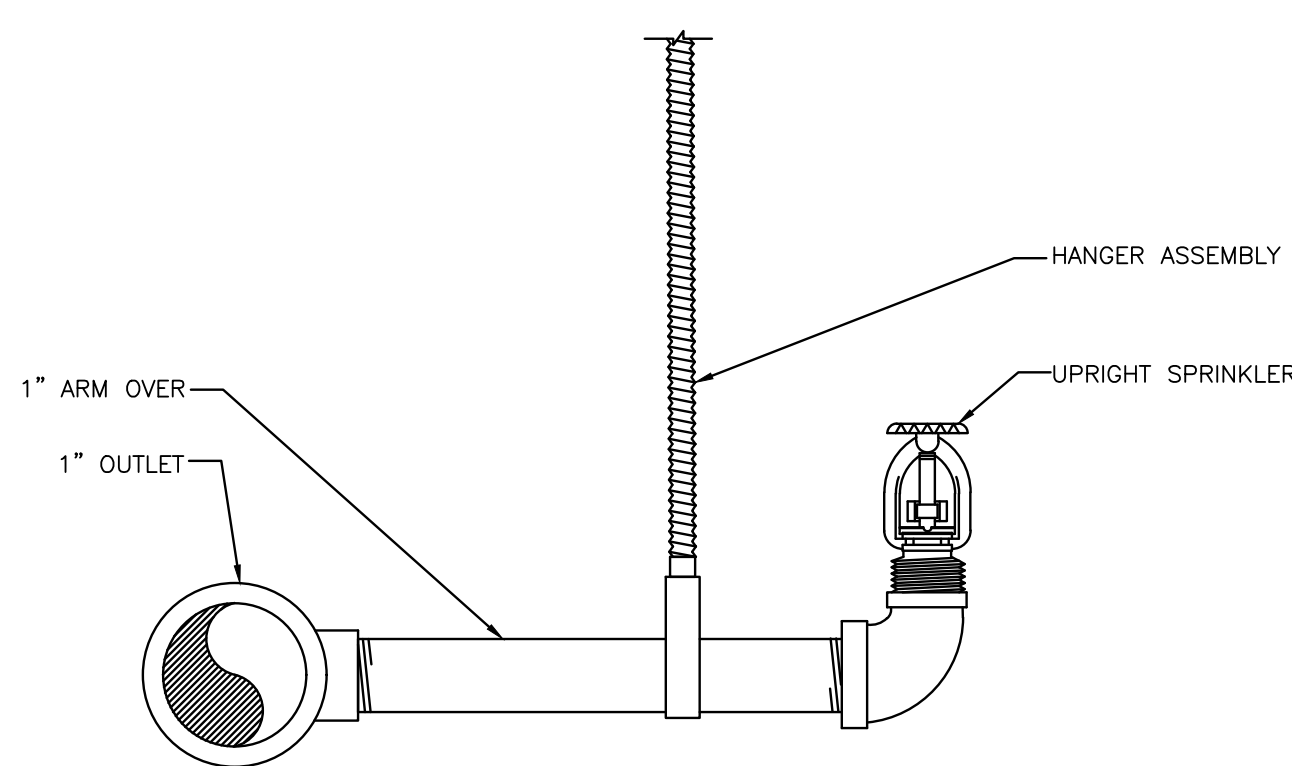


OPTION B

NOTE: CONTRACTOR TO SEAL DRY PENDENT SPRINKLERS AT FREEZER/COOLER USING ONE OF THE OPTIONS ABOVE. NO OTHER SEALANTS ARE PERMITTED.

5 FREEZER/COOLER DRY PENDENT SPRINKLER

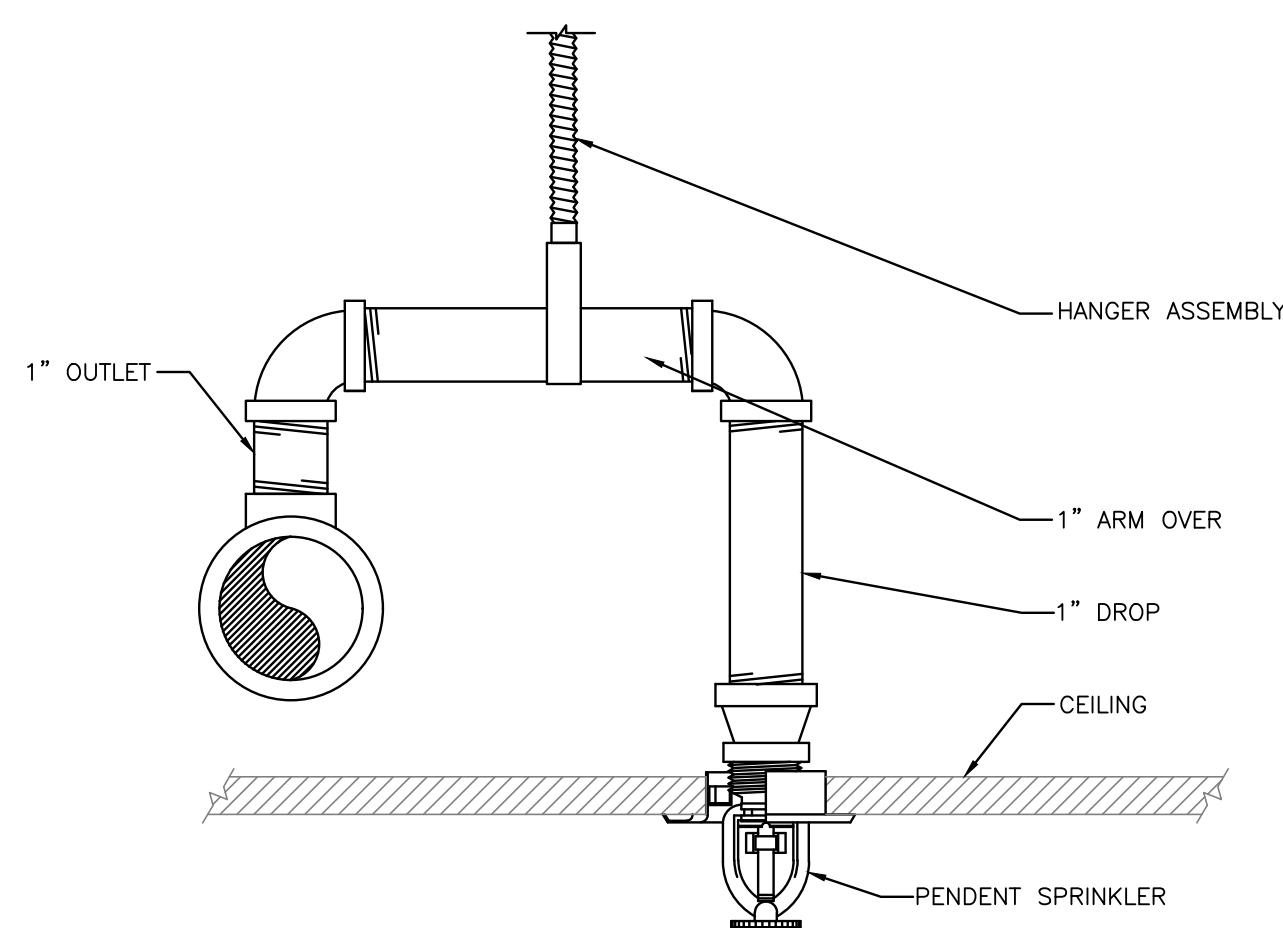
NO SCALE



PROVIDE HANGER WHEN ARMOR LENGTH EXCEEDS 24 INCHES.
ARRANGEMENT SHOWN IS SCHEMATIC. MODIFY TO SUIT CONDITIONS AND MEET APPLICABLE CODE REQUIREMENTS.

4 TYPICAL UPRIGHT SPRINKLER

NO SCALE

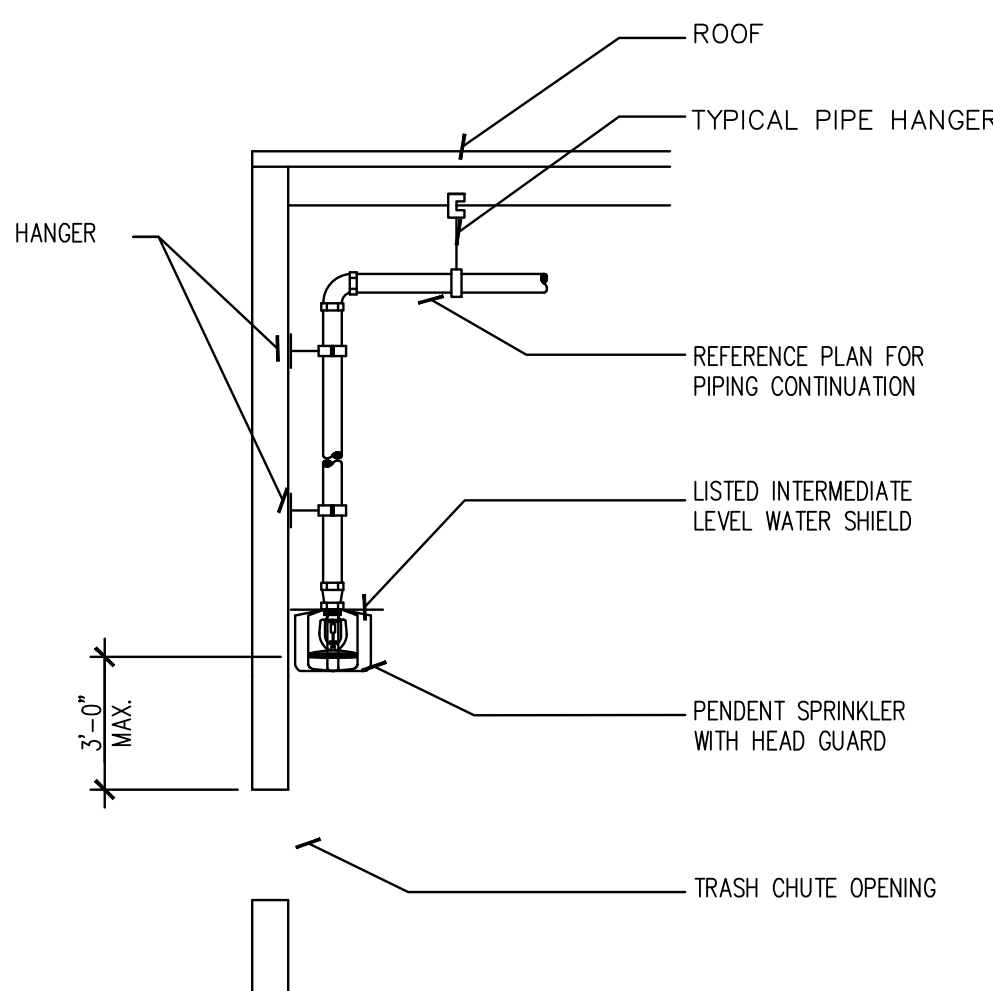


PROVIDE HANGER ASSEMBLY THAT PREVENTS UPWARD MOVEMENT OF THE PIPE WHEN ARMOR LENGTH EXCEEDS 12-INCHES AND SYSTEM STATIC PRESSURE AT THE SPRINKLER EXCEEDS 100 PSI. PROVIDE HANGER WHEN ARMOR LENGTH EXCEEDS 24-INCHES AND SYSTEM STATIC PRESSURE AT THE SPRINKLER DOES NOT EXCEED 100 PSI.

ARRANGEMENT SHOWN IS SCHEMATIC. MODIFY TO SUIT CONDITIONS AND MEET APPLICABLE CODE REQUIREMENTS.
PIPE SIZES SHALL MATCH THAT OF THE DRAWINGS FOR AREAS SUBJECT TO FREEZING. (2" MINIMUM)

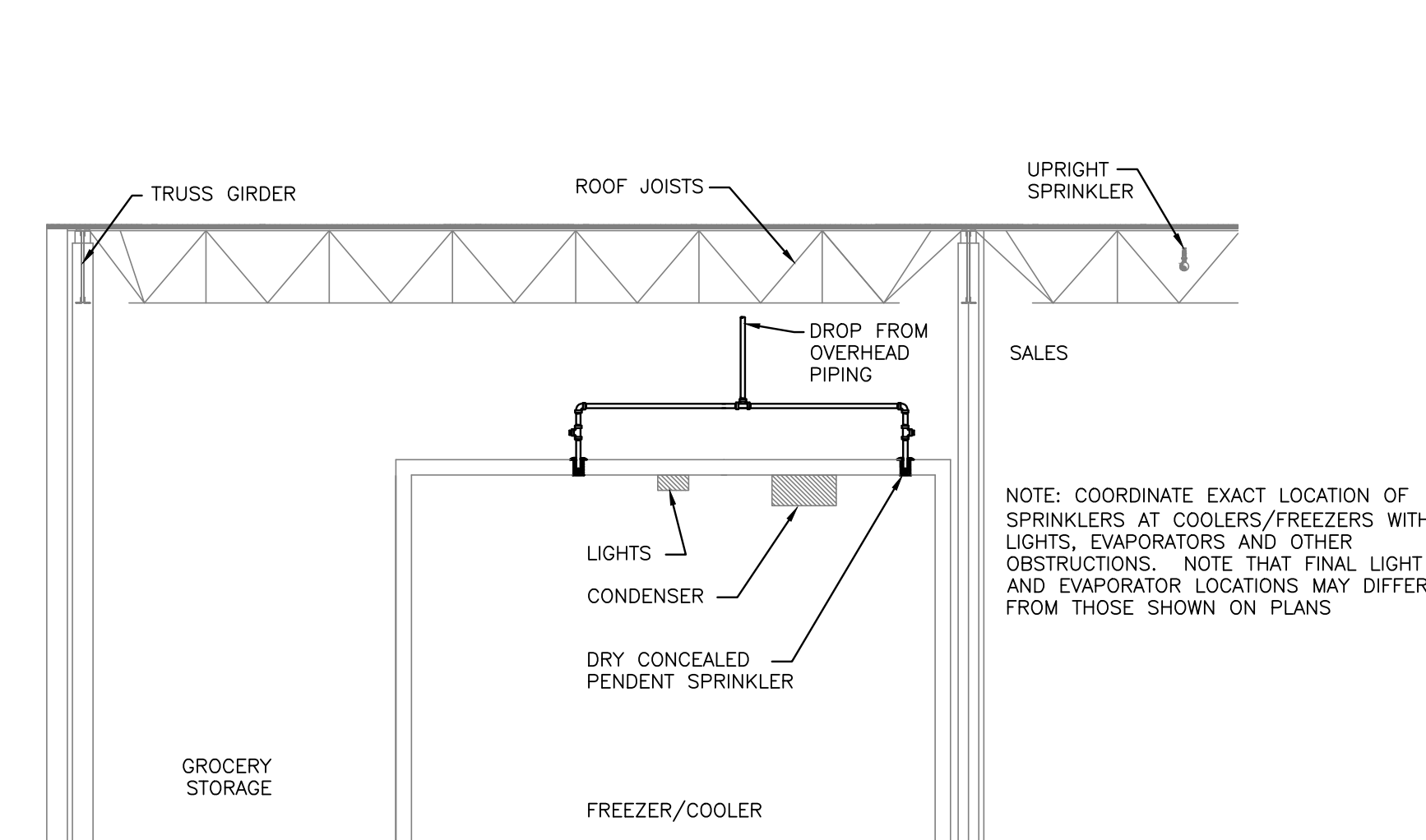
3 TYPICAL PENDENT SPRINKLER

NO SCALE



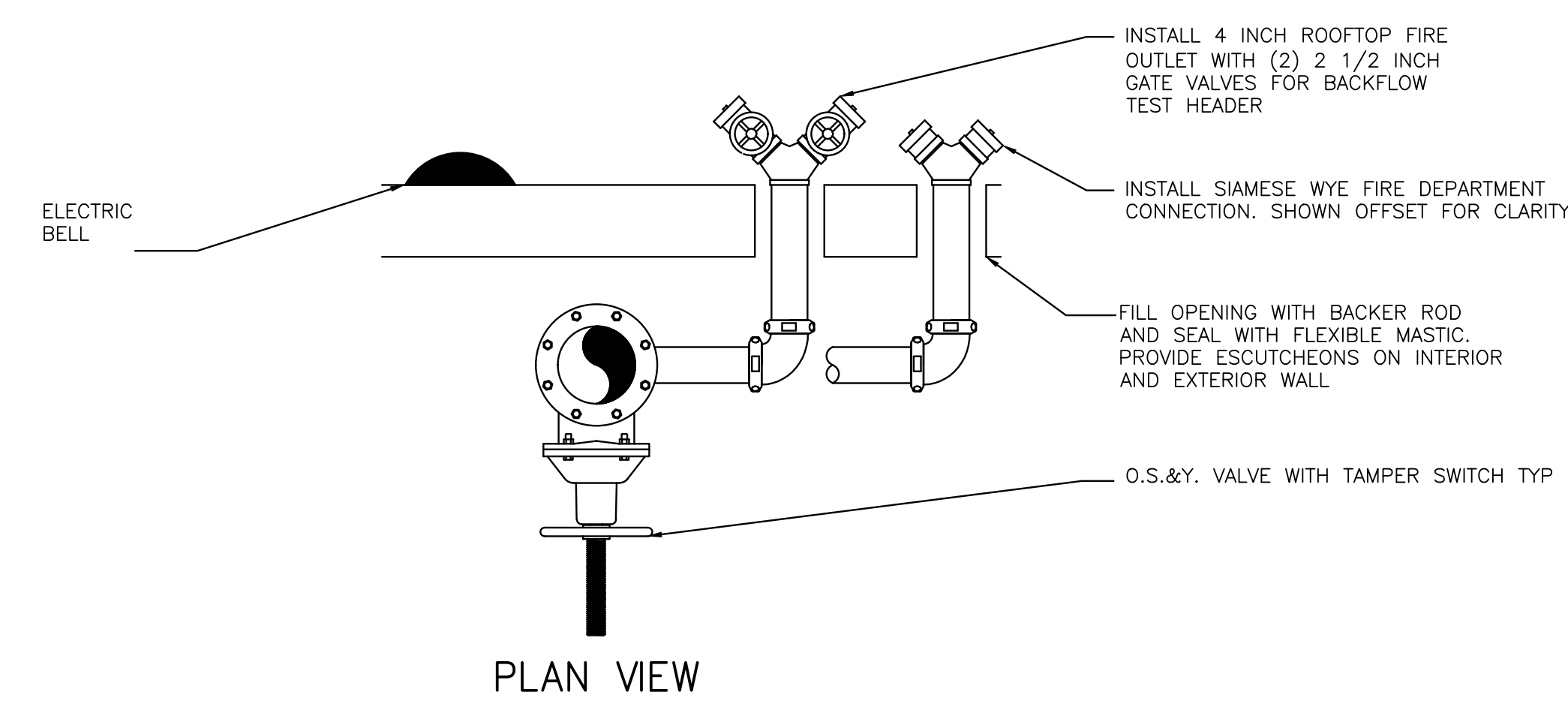
7 COMPACTOR SPRINKLER

NO SCALE

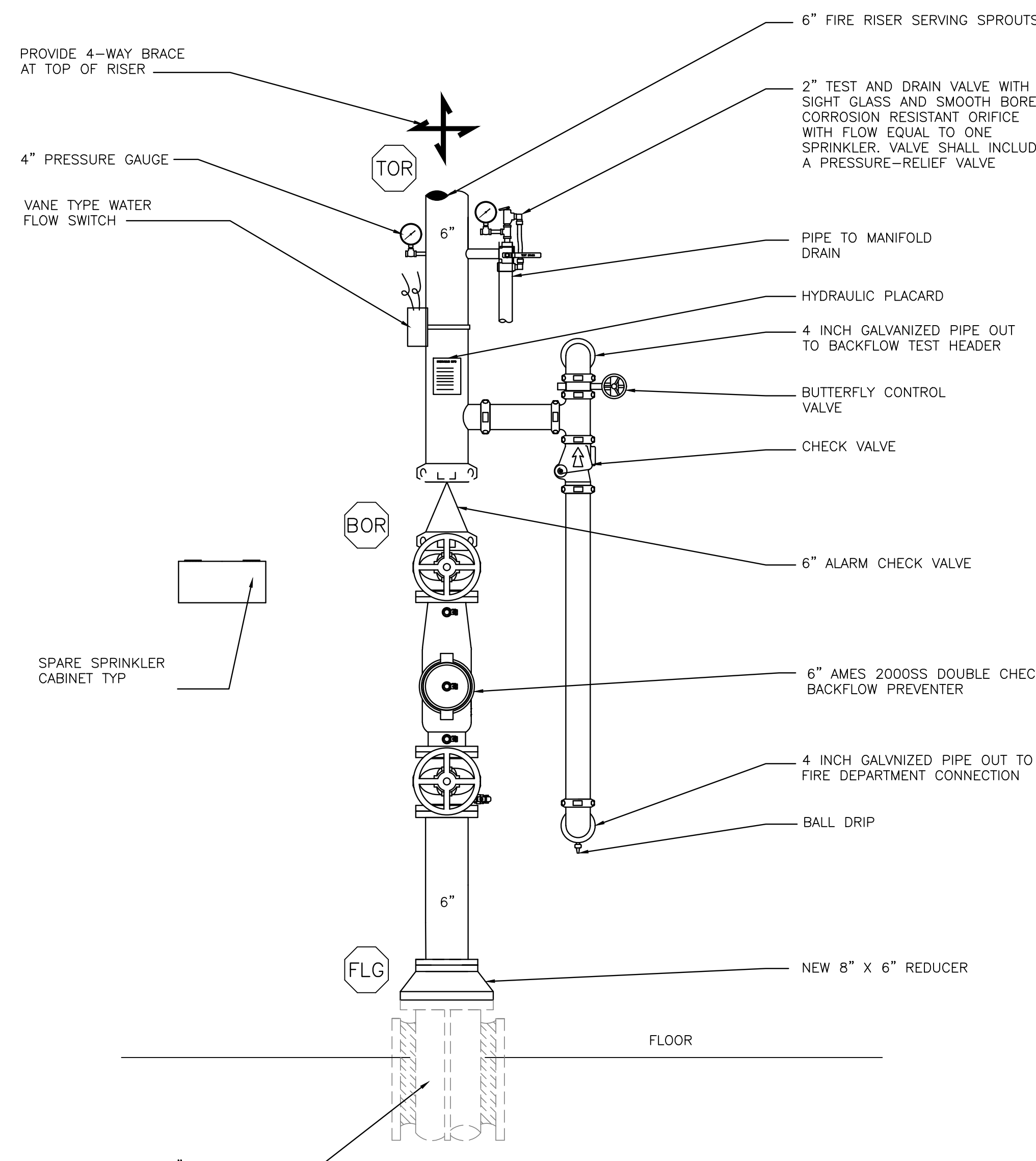


6 FREEZER SECTION

NO SCALE



PLAN VIEW

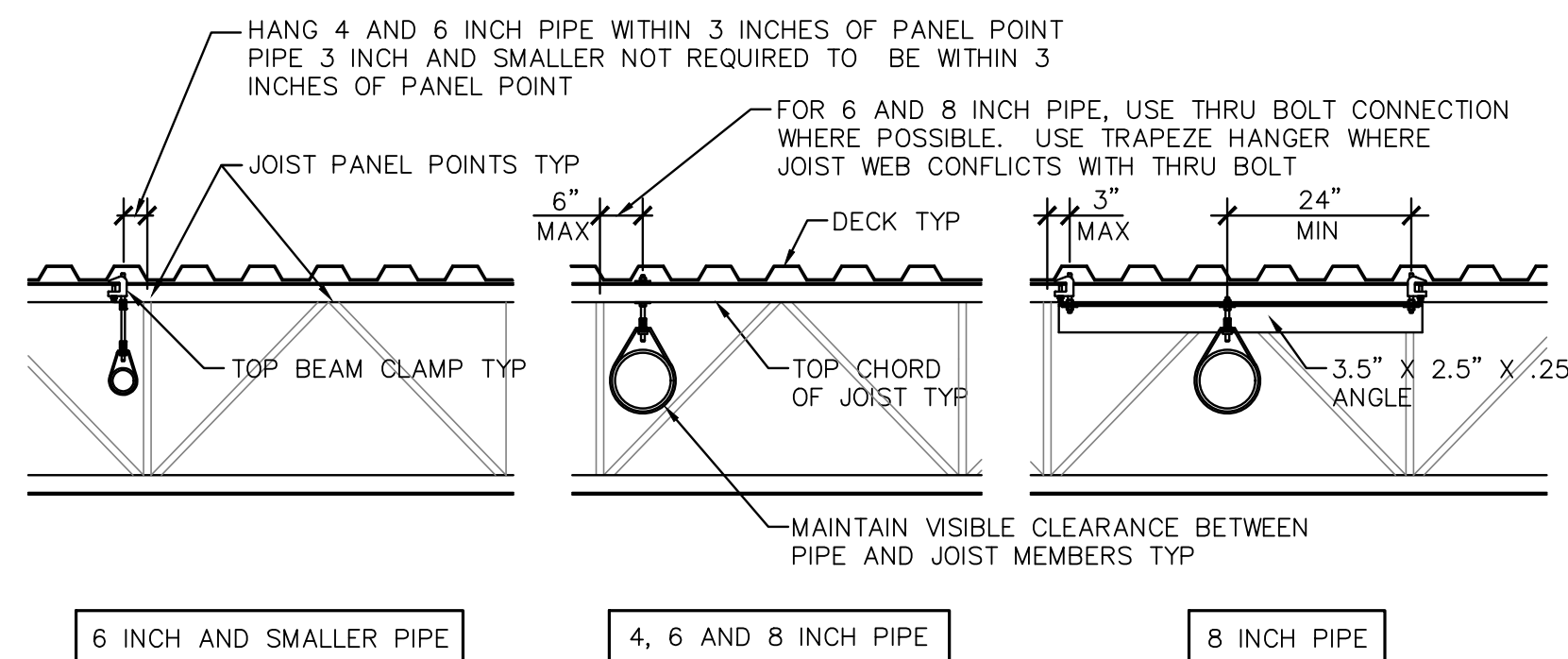


ELEVATION A

ARRANGEMENT SHOWN IS SCHEMATIC. MODIFY TO SUIT CONDITIONS AND MEET APPLICABLE CODE REQUIREMENTS. COORDINATE INSTALLATION OF ALARM DEVICES WITH OTHER TRADES.

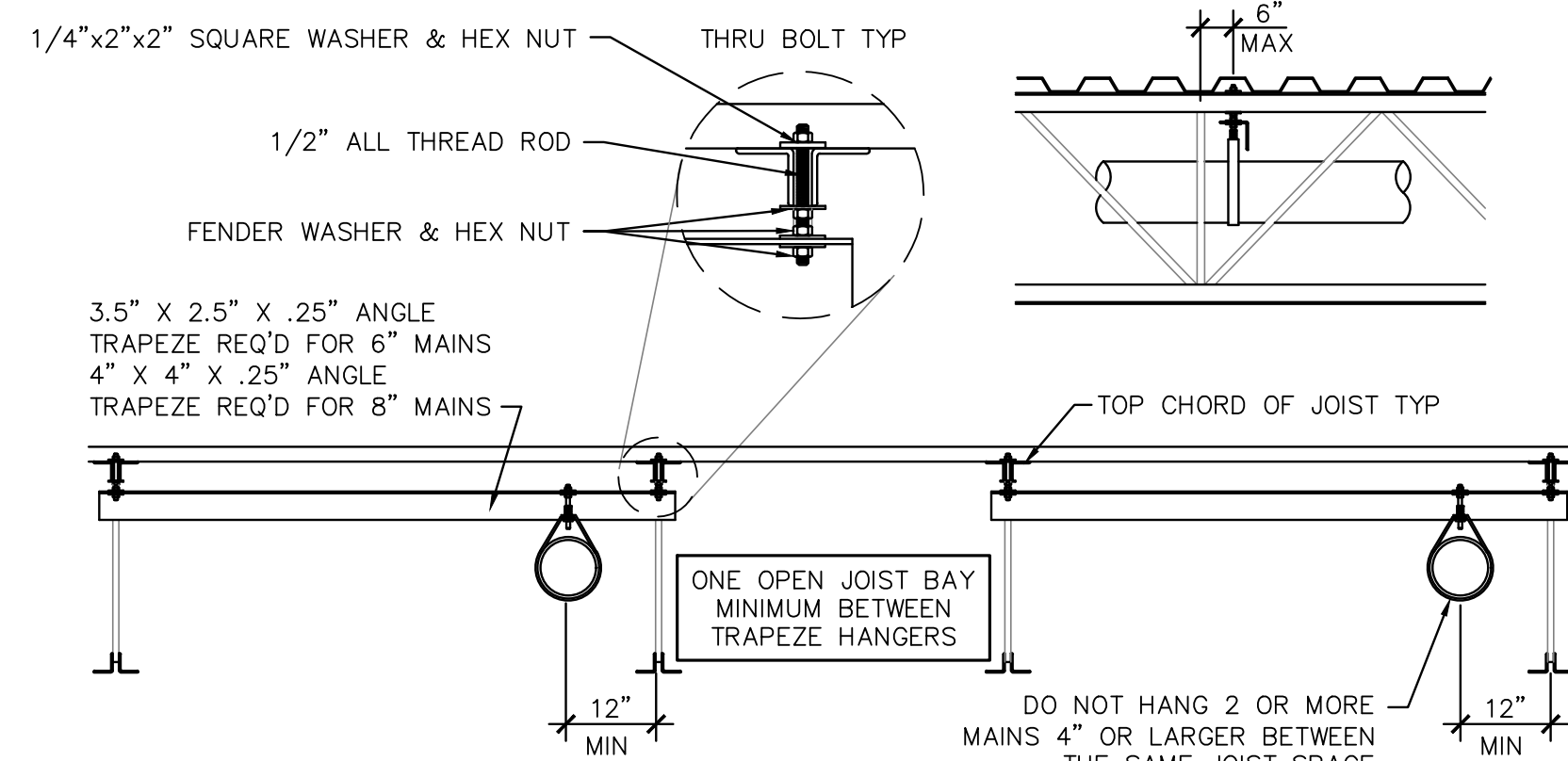
1 FIRE PROTECTION RISER - WET PIPE

NO SCALE



MAXIMUM HANGER SPACING FOR PIPING PERPENDICULAR TO JOISTS		
BEAM CLAMP NOT TRAPEZED	THRU-BOLT NOT TRAPEZED	BEAM CLAMP TRAPEZED
4" PIPE EVERY 12'-0" EVERY OTHER JOIST	4" PIPE EVERY 12'-0" EVERY OTHER JOIST	4" PIPE NOT NECESSARY
6" PIPE EVERY 6'-0" EVERY JOIST	6" PIPE EVERY 12'-0" EVERY OTHER JOIST	6" PIPE NOT NECESSARY
8" PIPE NOT ALLOWED	8" PIPE EVERY 6'-0" EVERY JOIST	8" PIPE EVERY 6'-0" EVERY JOIST

PIPE RUNNING PERPENDICULAR TO JOISTS



MAXIMUM HANGER SPACING FOR PIPES PARALLEL TO JOISTS		
4" PIPE EVERY 12'-0" NOT TRAPEZED BEAM CLAMP	6" PIPE EVERY 12'-0" TRAPEZED THRU BOLT	8" PIPE EVERY 12'-0" TRAPEZED THRU BOLT

PIPE RUNNING PARALLEL TO JOIST

CONTRACTOR MAY SUBSTITUTE ANGLE IRON TRAPEZE MEMBER WITH PIPE MEMBER. SIZE PIPE MEMBER IN ACCORDANCE WITH NFPA-13 AND MAINTAIN 12 INCH MAXIMUM DEFLECTOR DISTANCE

UTILIZE THESE HANGING METHODS FOR ALL SPRINKLER PIPING. SPACE TRAPEZE HANGERS IN ACCORDANCE WITH SCHEDULE. LOCATE HANGERS WITHIN 3 INCHES OF JOIST PANEL POINTS U.N.O.

NOTE: DO NOT SUPPORT SPRINKLER PIPING FROM BOTTOM CHORD OF BAR JOISTS

2 PIPE SUPPORT

NO SCALE