

PLUMBING EQUIPMENT CONNECTION SCHEDULE - BACK OF HOUSE														
SE NUMBER	DESCRIPTION	MANUFACTURER	MODEL	ROUGH IN	FINAL CONNECTION	TRIM BY	SEWER	TRAP	VENT	CW CONNECTION	HW CONNECTION	GAS CONNECTION	PLUMBING REMARKS	SE SUFFIX
BH147	WATER PROCESSING AND SELF-SERVE VENDING	NATIONAL WATER SERVICES, INC.	FRESHPURE							1/2" SRD	1"		C PROVIDES AND INSTALLS BPF-TREATMENT UNIT C PROVIDE 1" CW WITH BPF-1 AND BALL VALVE MOUNTED AT 72" AFF. ROUTE DRAINS TO FLOOR SINK. VENDING 3/4" (X2) AQUAPLEX FOR RO AND DI. ROUTE DRAIN LINE TO FLOOR DRAIN DI INSTALLED AT 72" F.O.H. A.F.F. C. INSTALLS SYSTEM IN ACCORDANCE WITH VENDOR'S RECOMMENDATIONS. IW TO HD.	
BH147a	REVERSE OSMOSIS WATER FILTER	NATIONAL WATER SERVICES, INC.	FRESHPURE	C	C	C			W				PLUMBING UNIT C PROVIDE 1" CW WITH BPF-1 AND BALL VALVE MOUNTED AT 72" A.F.F. IW TO FS. VENDING 3/4" (X2) AQUAPLEX FOR RO AND DI. ROUTE DRAIN LINE TO FLOOR DRAIN.	BDH
BH163	Produce Mixing System	NES	GQ340PMB	C	C		1/2"		W	1/2" SRD			C PROVIDES AND INSTALLS BPF-1 & BALL VALVE PRIOR TO CONNECTION. COPPER PIPING NOT ALLOWED. STUB OUT 1/2" SRD EVEN WITH TOP OF PRODUCE CASE. C INSTALLS SYSTEM IN ACCORDANCE WITH VENDOR'S RECOMMENDATIONS. IW TO HD.	
BH653	DISHWASHER W/ BOOSTER HEATER NEEDED ELEC (200V)	CMA DISH MACHINES	EST-44	C	C		2"			1/2"	1/2" (X2)		PROVIDE & INSTALL PRV, SOV, AND WVA ON WATER SUPPLY LINES. PROVIDE PRESSURE GAUGE DOWNSTREAM OF PRV IN LOCATION EASILY MOUNTED BY THE OPERATOR. SET PRESSURE TO 25 PSI. C PROVIDES BPF. INST FALL GAUGE IMMEDIATELY UPSTREAM OF THE FINAL RINSE SPRAY HEADS. PC TO PROVIDE DRAIN TEMPERING KIT WITH DISH WASHER. 2" IW TO FS WITH CAST IRON F-TRAP AND MINIMUM 10FT. CAST IRON PIPE.	
BH539	LC Dishwasher HIGH TEMP	CMA DISH MACHINES	CMA-180UC	C	C		1-1/2"	W		1/2"	3/4"		PROVIDE & INSTALL PRV, SOV, AND WVA ON WATER SUPPLY LINES. SET PRESSURE TO 25 PSI. C PROVIDES BPF-2. 1-1/2" IW TO FS WITH CAST IRON F-TRAP.	

PLUMBING EQUIPMENT CONNECTION SCHEDULE - EQUIPMENT													
SE NUMBER	DESCRIPTION	MANUFACTURER	MODEL	ROUGH IN	FINAL CONNECTION	TRIM BY	SEWER	TRAP	VENT	CW CONNECTION	HW CONNECTION	GAS CONNECTION	PLUMBING REMARKS
EQ010	WOOD BURNING PIZZA OVEN	MARRA FORMI	NEAPOLITAN 140	C	C								100 CFH 1-1/2" GAS DROP TO SOV. 3/4" GAS LINE PIPED FROM SOV TO GAS CONNECTION UNDER PIZZA OVEN. GAS LINE MUST HAVE SOV, DRIP LEF AND UNION.
EQ005	DOUBLE ELECTRIC OVEN	BLOCKETT	BCMA424EE	C	C					3/4" CW, 3/4" FW	-	3/4"	3/4" CW FOR QUENCH WATER CONNECTION. 3/4" FW TO STEAM WATER CONNECTION. BOTH CONNECTIONS ON BACK OF OVEN. PROVIDE EACH CONNECTION WITH ISOLATION VALVE. QUICK DISCONNECT. BPF-5 AND NSF 3/4" STAINLESS STEEL BRAIDED HOSES. 2" STAINLESS STEEL DRAIN ROUTED IW TO FS WITH CAST IRON F-TRAP.
EQ007	4 Burner 24" Range w/ Oven	GARLAND	G84-4L	C	C		--	--	--	--	--	3/4"	1/64 CFH WFM PROVIDES DORMANT BLUE HOSE WITH ANTIMICROBIAL PVC COATING ON STAINLESS STEEL. STEEL RESTRAINING CABLE. QUICK DISCONNECT FULL PORT BRASS BALL VALVE. COORDINATE GAS CONNECTION WITH APPLIANCE PROVIDER.
EQ141	Double Rack Gas Oven	Revent	724U	C	C		1"	W		1/2" FW		1"	3/43 CFH 1-1/2" GAS DROP TO SOV. 3/4" GAS LINE PIPED FROM SOV TO TOP OF OVEN. GAS LINE MUST HAVE SOV, DRIP LEG AND UNION IN BURNER COMP. 1/2" FW PIPED TO WATER SOLENOID WITH SOV AND UNION IN BURNER COMP. PROVIDE BPF. SOV. 2/38 CFH WFM PROVIDES DORMANT BLUE HOSE WITH ANTIMICROBIAL PVC COATING ON STAINLESS STEEL. STEEL RESTRAINING CABLE. QUICK DISCONNECT FULL PORT BRASS BALL VALVE. COORDINATE GAS CONNECTION SIZE WITH APPLIANCE PROVIDER.
EQ178	6 Burner 36" Range w/ Standard Oven	Garland	G36-6R	C	C							3/4"	1/22 CFH WFM PROVIDES DORMANT BLUE HOSE WITH ANTIMICROBIAL PVC COATING ON STAINLESS STEEL. STEEL RESTRAINING CABLE. QUICK DISCONNECT FULL PORT BRASS BALL VALVE. COORDINATE GAS CONNECTION SIZE WITH APPLIANCE PROVIDER.
EQ241	DOUBLE FRYER SINGLE FULL POT GAS W/ FILTER	FRYMASTER	FPF245	C	C							1"	80 CFH WFM PROVIDES DORMANT BLUE HOSE WITH ANTIMICROBIAL PVC COATING ON STAINLESS STEEL. STEEL RESTRAINING CABLE. QUICK DISCONNECT FULL PORT BRASS VALVE. COORDINATE GAS CONNECTION SIZE WITH APPLIANCE PROVIDER.
EQ256	FRYER	FRYMASTER	MA9E	C	C							3/4"	1/22 CFH WFM PROVIDES DORMANT BLUE HOSE WITH ANTIMICROBIAL PVC COATING ON STAINLESS STEEL. STEEL RESTRAINING CABLE. QUICK DISCONNECT FULL PORT BRASS BALL VALVE. COORDINATE GAS CONNECTION SIZE WITH APPLIANCE PROVIDER.
EQ212	3P CHAMFROLER	VULCAN	VOC036	C	C							3/4"	87 CFH WFM PROVIDES DORMANT BLUE HOSE WITH ANTIMICROBIAL PVC COATING ON STAINLESS STEEL. STEEL RESTRAINING CABLE. QUICK DISCONNECT FULL PORT BRASS BALL VALVE. COORDINATE GAS CONNECTION SIZE WITH APPLIANCE PROVIDER.
EQ273	Multi-Use Smoker	Old Hickory Pits	CTD				1-1/4"	W				1/2"	40 CFH WFM PROVIDES DORMANT BLUE HOSE WITH ANTIMICROBIAL PVC COATING ON STAINLESS STEEL. STEEL RESTRAINING CABLE. QUICK DISCONNECT FULL PORT BRASS BALL VALVE. COORDINATE GAS CONNECTION SIZE WITH APPLIANCE PROVIDER. IW TO FLOOR SINK.
EQ285	DOUBLE DECK GAS CONV. OVEN	VULCAN	VC4GD	C	C							1/2"	86 CFH WFM PROVIDES DORMANT BLUE HOSE WITH ANTIMICROBIAL PVC COATING ON STAINLESS STEEL. STEEL RESTRAINING CABLE. QUICK DISCONNECT FULL PORT BRASS BALL VALVE. COORDINATE GAS CONNECTION SIZE WITH APPLIANCE PROVIDER.
EQ294	TILT SKILLET 30 GAL	CLEVELAND RANGE	SQL-30-1	C	C		1-1/2"	W			1/2"	1/2"	1/28 CFH WFM PROVIDES DORMANT BLUE HOSE, STEEL RESTRAINING CABLE. QUICK DISCONNECT FULL PORT BRASS BALL VALVE. COORDINATE GAS CONNECTION SIZE WITH APPLIANCE PROVIDER. PROVIDE ISO VALVE. QUICK DISCONNECT AND HOSE.
EQ082	DBL CONV STEAMER FLR MTD ELEC	Acquanta	EB038E180 DBL	C	C		01, 3/4"	W	--	01, 3/4" FW			3/4" FW TO FEED WATER FOR EACH STEAMER UNIT. PROVIDE WITH ISO VALVE. QUICK DISCONNECT. BPF-5 AND NSF STAINLESS STEEL BRAIDED HOSES. EACH DRAIN IW TO FS WITH CAST IRON F-TRAP. EACH UNIT MUST HAVE SEPARATE DRAIN LINE.
EQ015	6 BACH PROOFER	RESCENT	F102	C	C		3/4"	W		1/2" FW			1/2" FW. C PROVIDES BPF-2 AND SOV PRIOR TO CONNECTION. 3/4" IW TO FS THROUGH BACK WALL.
EQ050	COFFEE BREWIER - DUAL STATION AIRPOT	FEICO	CBS-2150XTS-1G	C	C				--	1/2" FW	--	--	C TO PROVIDE & INSTALL QUICK DISCONNECT. DORMANT 71-SERIES FLEX CONNECTOR AT BREWER. SHUT OFF VALVE AND BPF-3. SUPPLY PRESSURE MUST ME 20-75 PSIG. WATER CONNECTION INLET 1/4" MALE FLARE.
EQ252	VEGETABLE DRIVER	ELECTROLUX DITO	VE-1	C	C		1-1/2"	W		1/2" FW			1-1/2" IW TO FS.
EQ092	ESPRESSO	LA MARZOCCO	LINEA PB - 2 GROUPS	C	C		3/4"	W		3/8" FW			3/4" IW TO FS. 3/8" FW. PROVIDE AND INSTALL BPF AND SOV PRIOR TO CONNECTION. REFER TO MANUFACTURER INSTALLATION MANUAL.

PLUMBING EQUIPMENT CONNECTION SCHEDULE - REMOTE REFRIGERATION													
NO.	DESCRIPTION	MANUFACTURER	MODEL	ROUGH IN	FINAL CONNECTION	TRIM BY	SEWER	TRAP	VENT	CW CONNECTION	HW CONNECTION	GAS CONNECTION	PLUMBING REMARKS
RR186	8' SERVICE	Hill Phoenix	S255C	C	C		1-1/2"	W					1-1/2" W TO HD.
RR315	12' FRONT LOAD 5 DECK REFRIG	HUESMANN	MEX-EP	C	C		1-1/4" (X2)	W					1-1/4" (X2) W TO HD.
RR318	18' Front Load Wet Product 4 Deck	HUESMANN	PAX-EP	C	C		1-1/4" (X2)	W					1-1/4" (X2) W TO HD.
RR319	12' Front Load Wet Product 4 Deck	Huesmann	PAX-EP	C	C		1-1/4" (X2)	W					1-1/4" (X2) W TO HD.
RR411	8' FROZEN COFFIN	HUESMANN	FI	C	C		1-1/2"	W					1-1/2" W TO HD.
RR432	4' AGED BEEF W/ REFRIG LOWER STORAGE	HUESMANN	AB0-4	C	C		1-1/2"	W					1-1/2" W TO HD.
RR513	8' MEAT SERVICE CASE	HILL PHOENIX	S255C	C	C		1-1/2"	W					1-1/2" W TO HD.
RR514	12' Service Meat	Hill Phoenix	S255C	C	C		1-1/2"	W					1-1/2" W TO HD.
RR550	NARROW REACH-IN GLASS DOOR MERCHANDISER	HILL PHOENIX	6NRBLH-8"	C	C		1-1/2"	W					1-1/2" W TO HD.
RR660	NARROW REACH-IN GLASS DOOR MERCHANDISER	HILL PHOENIX	6NRBLH-12"	C	C		1-1/2"	W					1-1/2" W TO HD.
RR616	3-DR Reach-In Frozen	Zero Zone	RVC236T2	C	C		1" (X2)	W					1" (X2) W TO HD.
RR617	4-DR Reach-In Frozen	Zero Zone	RVC236T2	C	C		1" (X2)	W					1" (X2) W TO HD.
RR618	5-DR Reach-In Frozen	Zero Zone	RVC236T2	C	C		1" (X2)	W					1" (X2) W TO HD.
RR741	10' PASTA BAR	SOUTHERN CASE ARTS	CUSTOM	C	C								ROUTE DRAIN INDIRECT TO HUB DRAIN.
RR746	10' OLIVE PICKLE BAR	SOUTHERN CASE ARTS	CUSTOM	C	C								ROUTE DRAIN INDIRECT TO HUB DRAIN.
RR752	REFRIG SALAD BAR	AMERCO	CUSTOM	C	C		1-1/2"	W		1/2"			1-1/2" WASTE TO SPILL INDIRECTLY TO HUB DRAIN. STUB UP CW INTO CASE WITH BPF AND ISOLATION VALVE. PROVIDE QUICK DISCONNECT
RR775	8' Service Deli	Huesmann	GS2C	C	C		1-1/2"	W		--			1-1/2" W TO HD.
RR780	AGED CHEESE CASE	BARBER	AGB-5GR	C	C		1-1/2"	W					1-1/2" W TO HD.
RR787	8' SELF SERVICE	HELPHOENIX	ACF-FS-6R-LS	C	C		1-1/2"	W					1-1/2" W TO HD.
RR803	14' Cheese Case	HELPHOENIX	DUPC-6R, DUPC-8R	C	C								1-1/2" W TO HD.
RR803	8' REFR 3-DR CASE	HILL PHOENIX	6RBLH-8"	C	C		1-1/2"	W					1-1/2" W TO HD.
RR885	8' DOORS REFR MD	HILL PHOENIX	6RBLH-8"	C	C		1-1/2"	W					1-1/2" W TO HD.
RR889	8' DOORS REFR MD	HILL PHOENIX	6RBLH-8"	C	C		1-1/2"	W					1-1/2" W TO HD.
RR890	12' DOORS REFR MD	HILL PHOENIX	6RBLH-12"	C	C		1-1/2"	W					1-1/2" W TO HD.
RR893	BLAST CHILLER	TRAILSEN	10CH1	C	C		1-1/2"	W					1-1/2" W TO HD.
RR895	4-DR REACH-IN FROZEN	HILL PHOENIX	6NRBLH-DOOR	C	C		1-1/2"	W					1-1/2" W TO HD.
RR897	ICE MACHINE	Hues	4000MLCP3200	C	C		1-1/2"	W		1/2" FW			HARD PIPE CONDENSATE AND BASIN DRAINAGE IW TO HD. C PROVIDES BPF-2 AND SOV PRIOR TO CONNECTION. ROUTE 3/4" FW DOWN TIGHT TO WALL TO 6" A.F.F. AND ROUTE 1/2"FW TO ICE MACHINE.

PLUMBING EQUIPMENT CONNECTION SCHEDULE - SELF-CONTAINED													
SE NUMBER	DESCRIPTION	MANUFACTURER	MODEL	ROUGH IN	FINAL CONNECTION	TRIM BY	SEWER	TRAP	VENT	CW CONNECTION	HW CONNECTION	GAS CONNECTION	PLUMBING REMARKS
SC011	GELATO BATCH FRIEZER	CATTABOGA	5B							1/2" (X2)			PROVIDE WITH 1/2" (2) NSF BRAIDED METAL HOSE CONNECTION, BPF-2, AND SOV. IW TO FS.
SC060	ICE CUBE MACHINE	MANTOVOC	DY-0244A	C	C		1/2"	W	--	3/8" FW	--	--	1/2" PFT IW TO FS. 3/8" PFT CW CONNECTION. C PROVIDES BPF-5 AND SOV PRIOR TO CONNECTION.
SC070	Chester Frosting Pile	Perik	4404	C	C		3/4"	W					IW TO FS.
SC713	REFRIGERATOR IN LOUNGE		PTS2284SSSS	C	C					3/8"			C PROVIDE AND INSTALL BPF-2 AND BALL VALVE IN WALL BOX 18" A.F.F. PRIOR TO CONNECTION FOR ICEWATER DISPENSER.

PLUMBING EQUIPMENT CONNECTION SCHEDULE - SINKS												
NO.	DESCRIPTION	MANUFACTURER	MODEL	FURNISHED	RECEIVED	INSTALLED	SEWER	TRAP		CW CONNECTION	HW CONNECTION	PLUMBING REMARKS
SK101	Hand Sink	American	SH-15									
SK139	CLEAN & SOILED DISH TABLES w/ 3-COMP & 1-COMP SS SINKS - R TO L 90 DEGREE	AMTERCO	CUSTOM	WF	GC	GC	1-1/2"	W		1/2" X2	1/2" X2	C PROVIDES AND INSTALLS CHECKS ON SUPPLIES. IW TO FS
SK150	1-COMP SINK	AMTERCO	C-13424-C	WF	GC	GC	1-1/2"	W		1/2"	1/2"	C PROVIDES AND INSTALLS CHECKS ON SUPPLIES. IW TO FS
SK161	1-COMP SINK W/ DRAIN BOARD	AMTERCO	C-13424-1BL	WF	GC	GC	1-1/2"	W		1/2"	1/2"	C PROVIDES AND INSTALLS CHECKS ON SUPPLIES. IW TO FS
SK168	2-COMP W/ FISH SCALE INT.	AMTERCO	FFPB-7B	WF	GC	GC	1-1/2"	W		1/2"	1/2"	C PROVIDES AND INSTALLS CHECKS ON SUPPLIES. IW TO FS
SK230	2-COMP SINK W/ 1 DRAINBOARD	AMTERCO	C-3-1624-NL	WF	GC	GC	1-1/2"	W		1/2"	1/2"	C PROVIDES AND INSTALLS CHECKS ON SUPPLIES. IW TO FS
SK266	2-COMP W/ 2 DRAINBOARD	AMTERCO	C-3-1624-HD	WF	GC	GC	1-1/2"	W		1/2"	1/2"	C PROVIDES AND INSTALLS CHECKS ON SUPPLIES. IW TO FS
SK312	3-COMP RPT W/ 2 DRAINBOARD	AMTERCO	C-3-1718-SD	WF	GC	GC	1-1/2"	W		1/2" X2	1/2" X2	C PROVIDES AND INSTALLS CHECKS ON SUPPLIES. IW TO FS
SK371	3-COMP R3 1/2" W/ 2 DRAINBOARD	AMTERCO	C-3-1830-HD	WF	GC	GC	1-1/2"	W		1/2"	1/2"	C PROVIDES AND INSTALLS CHECKS ON SUPPLIES. IW TO FS
SK372	3-COMP SS SINK w/ DOUBLE DRAIN BOARDS w/ SPRAY	AMTERCO	C-3-3430-1HD	WF	GC	GC	1-1/2"	W		1/2" X2	1/2" X2	C PROVIDES AND INSTALLS CHECKS ON SUPPLIES. IW TO FS

COPYRIGHT NOTICE
THIS DRAWING IS THE PROPERTY OF THE ABOVE REFERENCED PROFESSIONAL AND SHALL BE THE SOLE PROPERTY OF THE PROFESSIONAL. IT IS NOT TO BE REPRODUCED OR TRANSMITTED IN ANY MANNER WITHOUT THE EXPRESS WRITTEN PERMISSION FROM THE PROFESSIONAL.

ISSUE RECORD
DATE DESCRIPTION

09/10/2016 PERMIT SET
02/13/2017 BID SET

PROFESSIONAL SEAL

PROFESSIONAL IN CHARGE
ERIC WOLF

PROJECT MANAGER
ERIC WOLF

QUALITY CONTROL
AMY HADLOW

DRAWN BY
CONNOR BARRETT

PROJECT NAME
WHOLE FOODS MARKET

KENNESAW, GA

1300 ERNEST BARRETT PKWY, SUITE 500 KENNESAW, GA 30152



PROJECT NUMBER
20150922.0

SHEET TITLE
PLUMBING SCHEDULES

SHEET NUMBER
P002

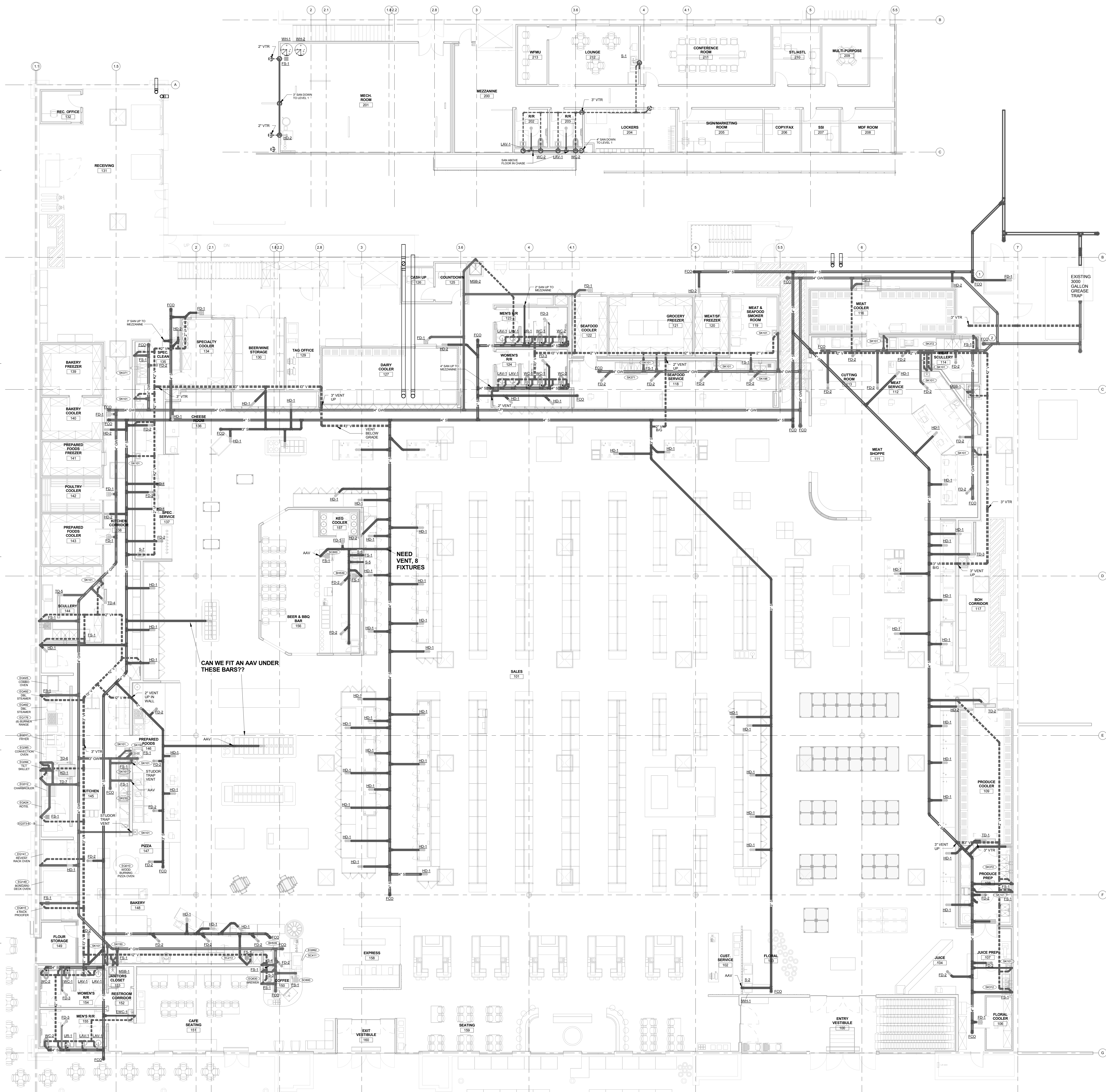
ISSUED FOR CONSTRUCTION

GENERAL NOTES (APPLY TO P100):

1. PROVIDE 4" TOP IR REDUCER FOR HUB DRAINS SERVING 2 OR MORE CONDENSATE DRAIN LINES.
2. PROVIDE DRAIN WATER TEMPERING KIT ON HIGH TEMP DISHWASHER MODELS.
3. ANY VENT WHICH EXCEEDS 40 FT IN DEVELOPED LENGTH SHALL BE INCREASED ONE PIPE SIZE FOR THE ENTIRE DEVELOPED LENGTH.
4. INSULATE ALL CONDENSATE PIPING SERVING EVAPORATOR COILS IN BACK OF HOUSE. PROVIDE WHITE INSULATION FOR CONDENSATE IN COOLERS & FREEZERS.
5. CASEHUB DRAINS SHALL BE 4" WITH 2" TRAP UNLESS NOTED OTHERWISE. THE CASE DRAINS TOGETHER AND ROUTE INDIRECT TO HUB DRAIN. USE 1-1/2" SCHEDULE 40 PVC FOR CASE DRAINS EXCEEDING 2 FT. TYPICAL FOR ALL HUB DRAINS SERVING REFRIGERATION CASES. REFER TO DETAIL 12940 FOR ADDITIONAL INFORMATION.
6. REFER TO 11902 FOR 2-COMPARTMENT SINK DETAIL.
7. REFER TO 11903 FOR 3-COMPARTMENT SINK DETAIL.
8. REFER TO 15940 FOR FLOOR CLEANOUT DETAIL.
9. REFER TO 15940 FOR FLOOR CLEANOUT DETAIL.
10. COORDINATE EXACT LOCATION OF HUB DRAINS BELOW COUNTERS/ALL WORK WITH ARCHITECTURE.
11. INSTALL AIR ADMITTANCE VALVES (AAV) IN ACCESSIBLE LOCATION OR PROVIDE ACCESS PANEL AS REQUIRED. PAINT ACCESS PANEL TO MATCH WALL.
12. DRY VENTS ROUTED UNDERGROUND SHALL RISE A MINIMUM OF 6" CENTER TO CENTER, FROM HIGHEST FUTURE FLOOD RIM (OR WASTE LINE FOR CIRCUIT VENTS) BEFORE TRANSITIONING TO HORIZONTAL.

KEYNOTES P100

NOTE	DESCRIPTION
1	CONNECT TO EXISTING 6" SANITARY PIPING AT EXISTING STUB UP INSIDE BUILDING. INVERT = x"x" FT BELOW FINISHED FLOOR. VERIFY EXACT LOCATION AND DEPTH.
2	CONNECT TO EXISTING 4" GREASE WASTE PIPING AT EXISTING STUB UP INSIDE BUILDING. INVERT = x"x" FT BELOW FINISHED FLOOR. VERIFY EXACT LOCATION AND DEPTH.



COPYRIGHT NOTICE

THIS DRAWING IS THE PROPERTY OF THE
ABOVE REFERENCED PROFESSIONAL AND
SHALL NOT BE USED FOR ANY PURPOSE
OTHER THAN THE SPECIFIC PROJECT AND
SITE NAMED HEREIN, AND CANNOT BE
REPRODUCED IN ANY MANNER WITHOUT
THE EXPRESS WRITTEN PERMISSION
FROM THE PROFESSIONAL.

ISSUE RECORD

DATE	DESCRIPTION
09/10/2016	PERMIT SET
02/13/2017	BID SET

PROFESSIONAL SEAL

PROFESSIONAL IN CHARGE

ERIC WOLF

PROJECT MANAGER

ERIC WOLF

QUALITY CONTROL

AMY HADLOW

DRAWN BY

CONNOR BARRETT

PROJECT NAME

WHOLE FOODS

MARKET

KENNESAW,
GA1300 ERNEST
BARRETT PKWY,
SUITE 500
KENNESAW, GA 30152

PROJECT NUMBER

20150922.0

SHEET TITLE

PLUMBING
FLOOR PLAN -
WASTE & VENT

SHEET NUMBER

P100

ISSUED FOR CONSTRUCTION

GENERAL NOTES (APPLY TO P102):

1. GAS PIPING SHALL BLACK RISEN, PRIME AND PAINT GAS PIPING ON ROOF (YELLOW) BEFORE CORROSION PRIMER IS APPLIED. GAS PIPING BEING LACED TO MATCH ADJACENT WALL.
2. INSTALL GAS REGULATORS MINIMUM 5' FT. AWAY FROM RTU AND MINIMUM 10' FT. AWAY FROM ANY OUTSIDE AIR INTAKE OR EXHAUST. GAS PIPING SHALL BE 1/2" ABOVE THE ROOF SURFACE. GAS PIPING SHALL BE 1/2" ABOVE THE ROOF SURFACE.
3. GAS REGULATORS SHALL BE INSTALLED ON THE ROOF AND VENTED TO THE ATMOSPHERE UNLESS NOTED OTHERWISE. INSTALL DWP LEAD AND SHUT OFF VALVE PRIOR TO GAS CONNECTION DWP LEAD SHALL BE MINIMUM 3' LENGTH AND SHALL BE MINIMUM 3/4" A.S.F.
4. INSTALL CONDENSATE FROM ANSUL SYSTEM TO AUTOMATIC FLY SHUT-OFF VALVE WITH MINIMUM 3" LENGTH AND UNDERGROUND GAS PIPING SHALL BE TRAC PIPE P-81 UNDERGROUND CORRUGATED STAINLESS STEEL TUBING AND RIGID AT BOTH ENDS. PROVIDE PVC SLEEVE FOR ALL PRE-ENGINEERED CORROSION PROTECT SLEEVE TO SEE AT FLOOR PENETRATIONS.

[illegible]

COPYRIGHT NOTICE
THIS DRAWING IS THE PROPERTY OF THE
ABOVE REFERENCED PROFESSIONAL FIRM.
IT IS NOT TO BE USED FOR ANY PURPOSE
OTHER THAN THE SPECIFIC PROJECT AND
SITE NAMED HEREIN, AND CANNOT BE
REPRODUCED IN ANY MANNER WITHOUT
THE EXPRESS WRITTEN PERMISSION
FROM THE PROFESSIONAL FIRM.

ISSUE RECORD

DATE	DESCRIPTION
09/16/2016	PERMIT SET
02/13/2017	BID SET

PROFESSIONAL SEAL

PROFESSIONAL IN CHARGE
ERIC WOLF

PROJECT MANAGER
ERIC WOLF

QUALITY CONTROL
AMY HADLOW

DRAWN BY
CONNOR BARRETT

PROJECT NAME
WHOLE FOOD

MARKET

KENNEDY

KINNLE
GA

CA

1300 ERNES
BARRETT PK

SUITE 500
KENNESAW

KENNESAW,

УДК

FOC
MARK



PROJECT NUMBER

20150922.0

SHEET TITLE

PLUMBING
FLOOR PL

FLOOR TILE
NATURAL

SHEET NUMBER

D102

F 102

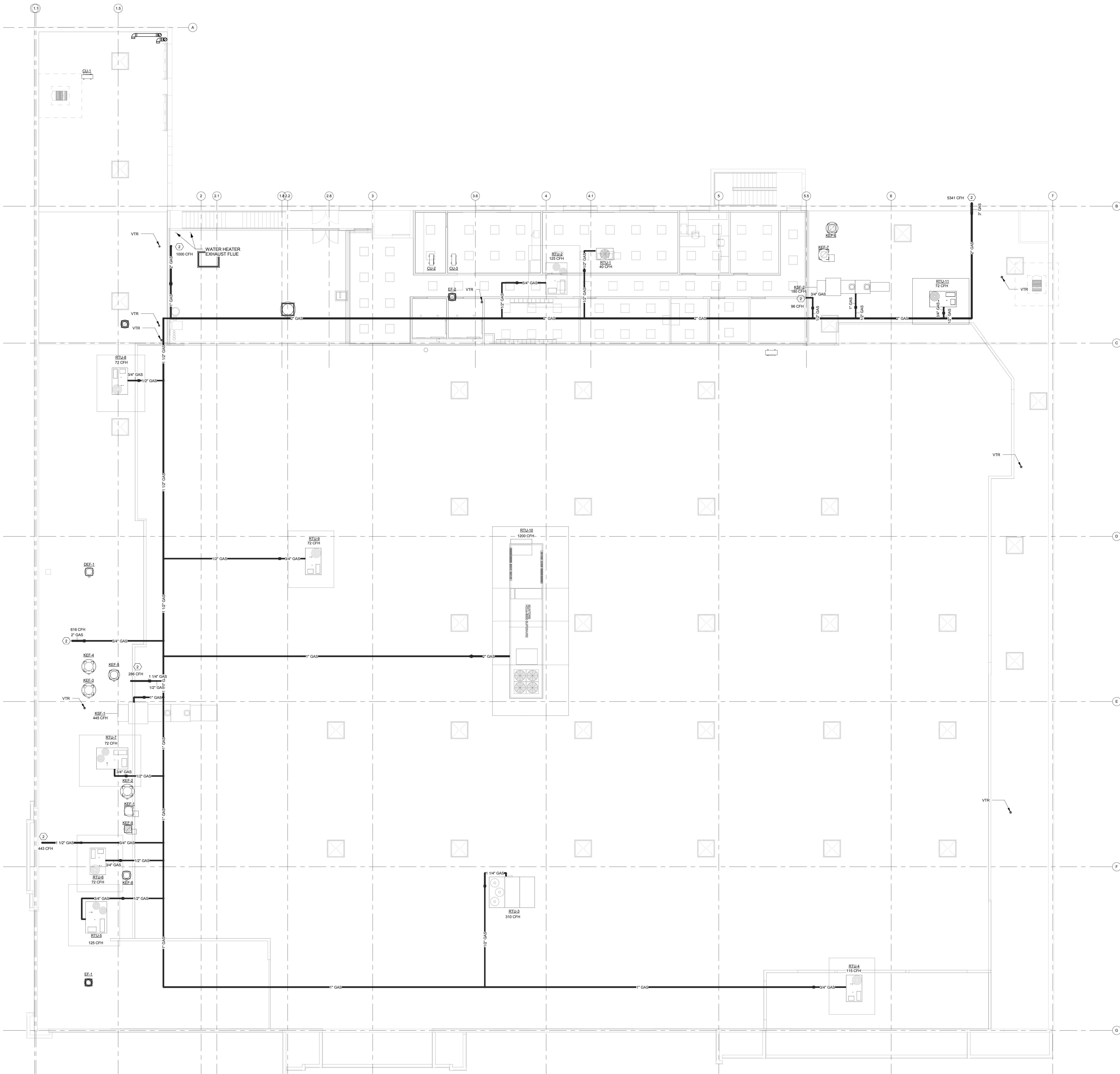
ISSUED FOR:

GENERAL NOTES (APPLY TO P104):

- GAS PIPING SHALL BE BLACK IRON, PRIME AND PAINT GAS PIPING ON ROOF (YELLOW) TO PREVENT CORROSION. PRIME AND PAINT GAS PIPING BELOW CEILING TO MATCH ADJACENT WALL.
- INSTALL GAS REGULATORS MINIMUM 8" AWAY FROM RTU AND MINIMUM 10' FT AWAY FROM ANY OUTSIDE AIR INTAKE.
- INTERIOR GAS PIPING SIZED FOR LOW PRESSURE (7" W.C.). GAS PIPING ON ROOF SIZED FOR 5 PSI SUPPLY PRESSURE.
- GAS REGULATORS SHALL BE INSTALLED ON THE ROOF AND VENTED TO THE ATMOSPHERE UNLESS NOTED OTHERWISE.
- INSTALL DRIP LEG AND SHUT OFF VALVE PRIOR TO GAS CONNECTION. DRIP LEG SHALL BE MINIMUM 3' LENGTH AND INSTALLED MINIMUM 5' A.F.F.
- INSTALL CONDUIT FROM ANSL SYSTEM TO AUTOMATIC FUEL SHUT-OFF VALVE WITHIN WALL.
- ALL UNDERGROUND GAS PIPING SHALL BE TRAC PIPE PLUS PRE-SLEEVED CORRUGATED STAINLESS STEEL TUBING AND VENTED AT BOTH ENDS. PROVIDE PVC SLEEVE FOR ALL UNDERGROUND PIPING. DO NOT SEAL PIPING TO SLEEVE AT FLOOR PENETRATIONS.

KEYNOTES P104

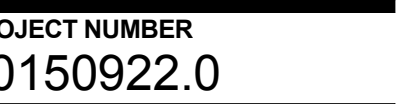
NOTE	DESCRIPTION
1	EXISTING GAS DOWN EXTERIOR WALL TO LANDLORD PROVIDED METER. REFER TO P103 FOR CONTINUATION.
2	PROVIDE SHUT OFF, GAS REGULATOR, AND UNIONS AT ROOF PENETRATION. VENT TO ATMOSPHERE. REGULATOR SHALL REDUCE GAS PRESSURE FROM 5 PSI TO 7 IN. W.C. SEE DETAIL 11401.



PROFESSIONAL SEAL

PROJECT NAME
HOLE FOODS MARKET

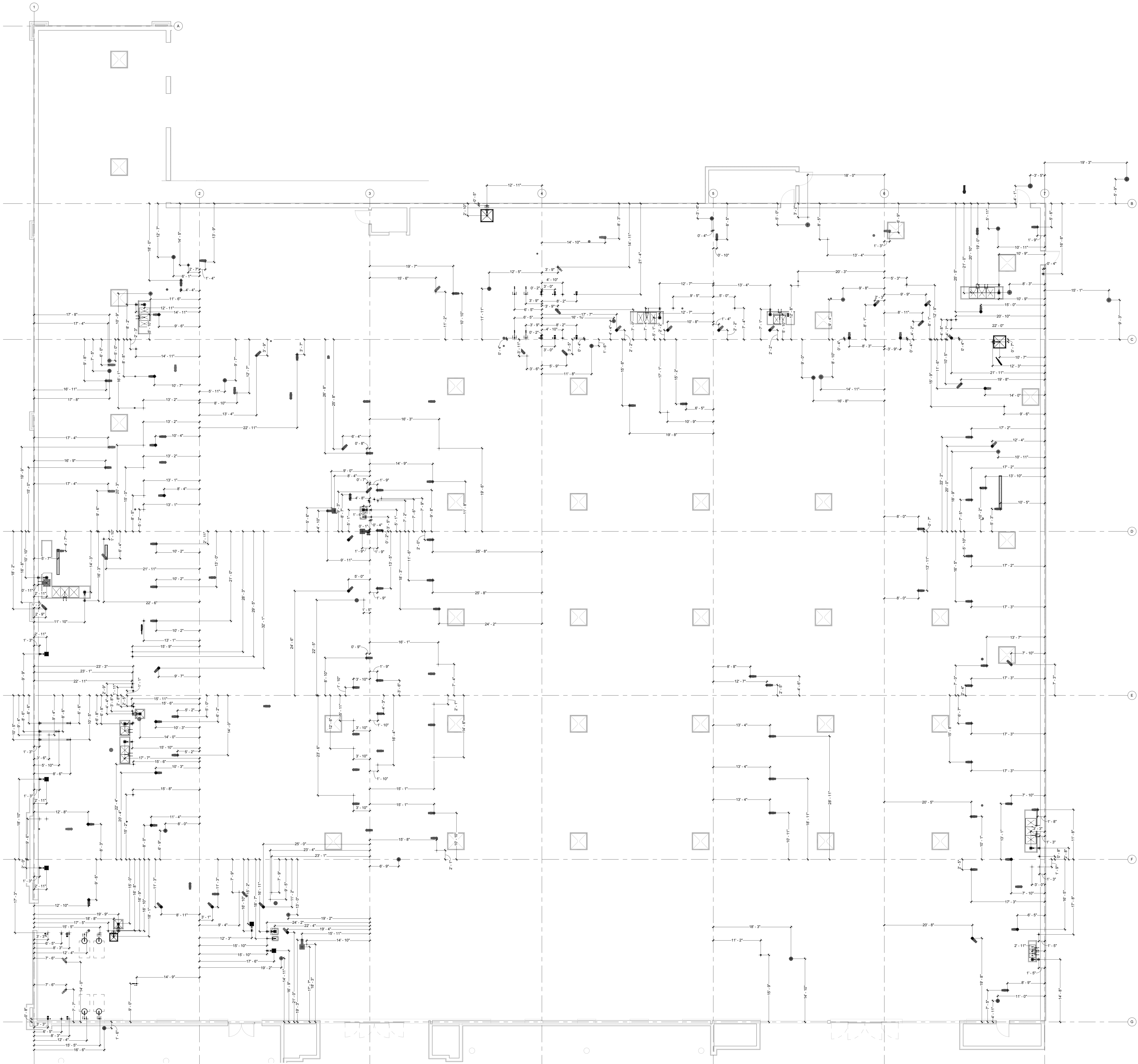
100 ERNEST
ARRETT PKWY,
SUITE 500
KENNESAW, GA 30152



EET NUMBER

P200

ISSUED FOR CONSTRUCTION





COPYRIGHT NOTICE
THIS DRAWING IS THE PROPERTY OF THE
ABOVE REFERENCED PROFESSIONAL AND
IS NOT TO BE USED FOR ANY PURPOSE
OTHER THAN THE SPECIFIC PROJECT AND
SITE NAMED HEREIN, AND CANNOT BE
REPRODUCED IN ANY MANNER WITHOUT
THE EXPRESS WRITTEN PERMISSION
FROM THE PROFESSIONAL.

[illegible]

PROFESSIONAL SEAL

PROFESSIONAL IN CHARGE

PROJECT MANAGER

QUALITY CONTROL

AWN BY
thor

PROJECT NAME
HOLE FOODS
MARKET

TENNESAW,
GA

600 ERNEST
ARRETT PKWY,
SUITE 500
KENNESAW, GA 30152



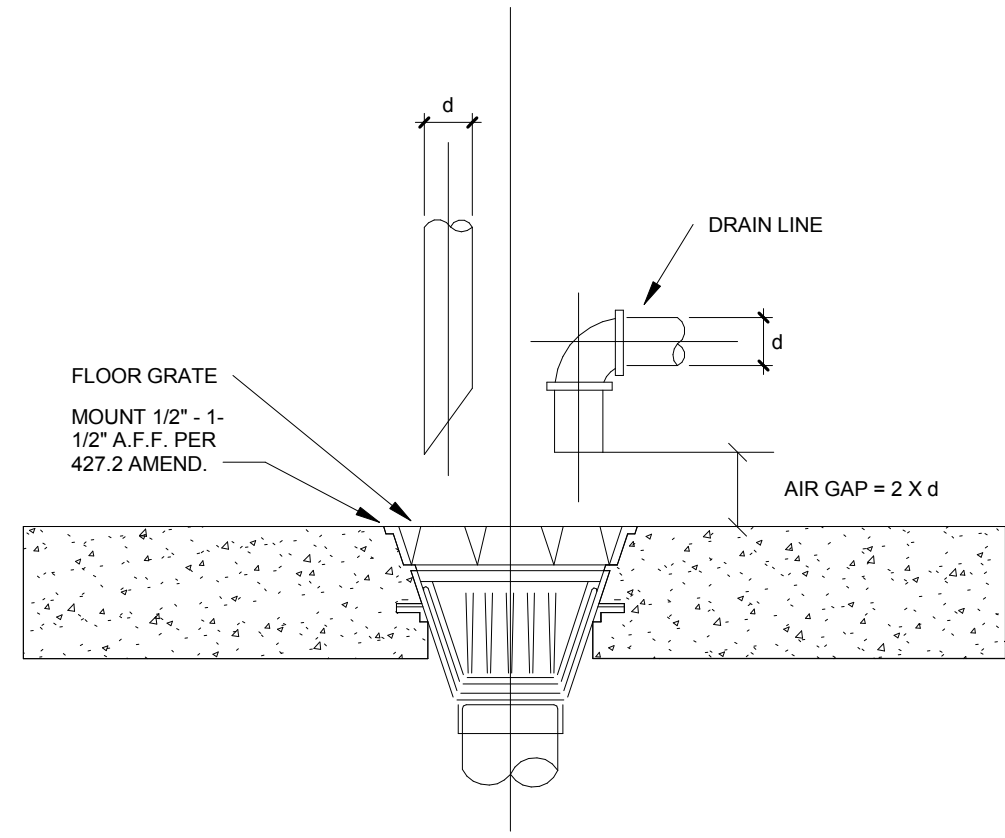
PROJECT NUMBER
0150922.0

CLIMBING PART PLANS AND USERS

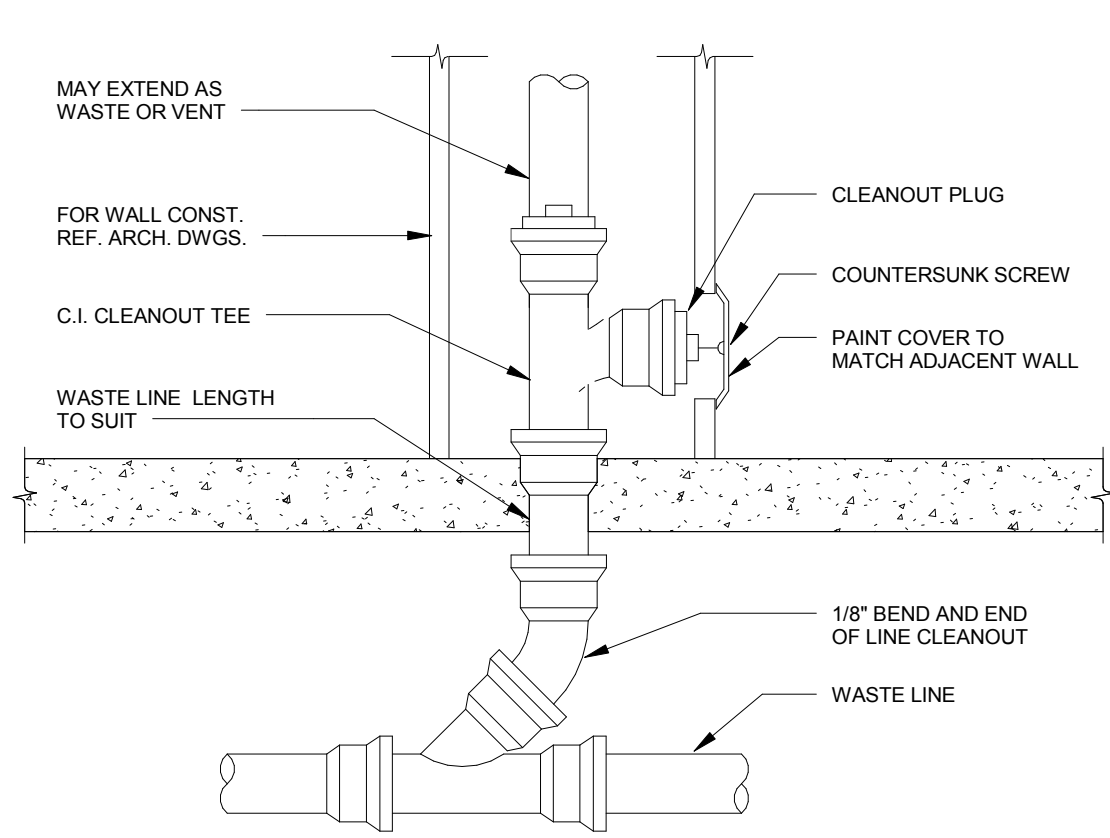
EET NUMBER

P300

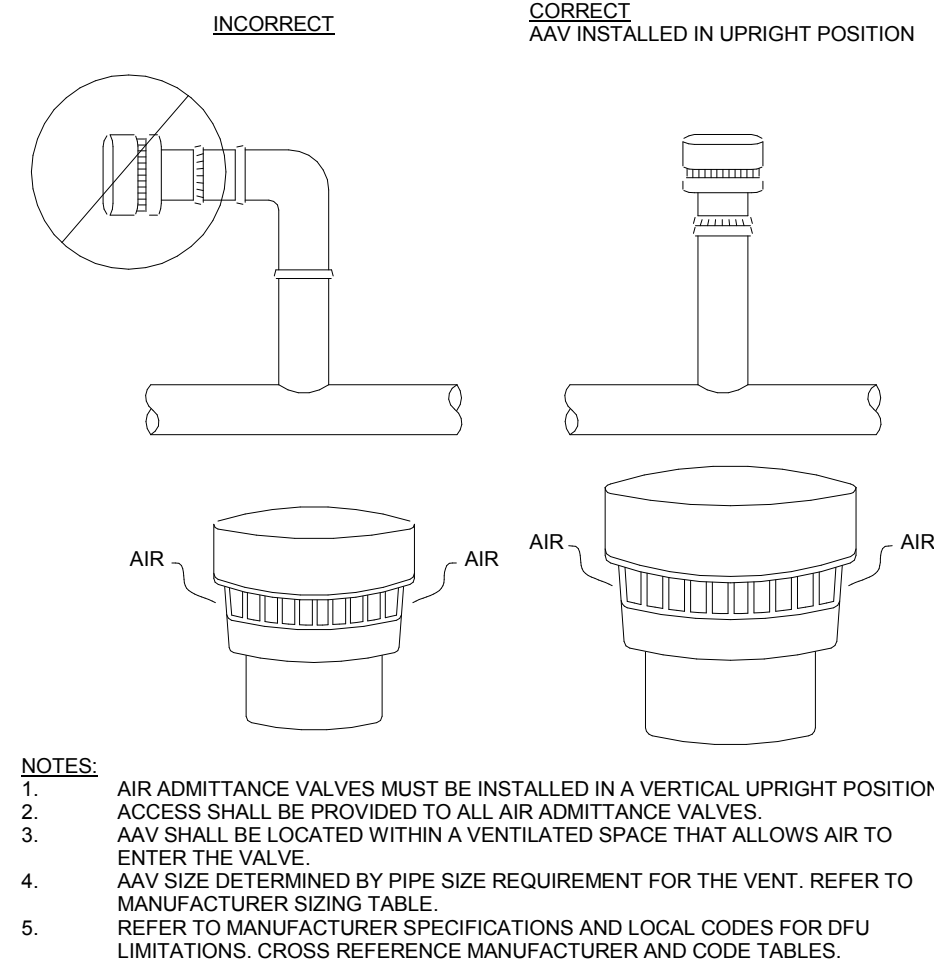
ISSUED FOR CONSTRUCTION



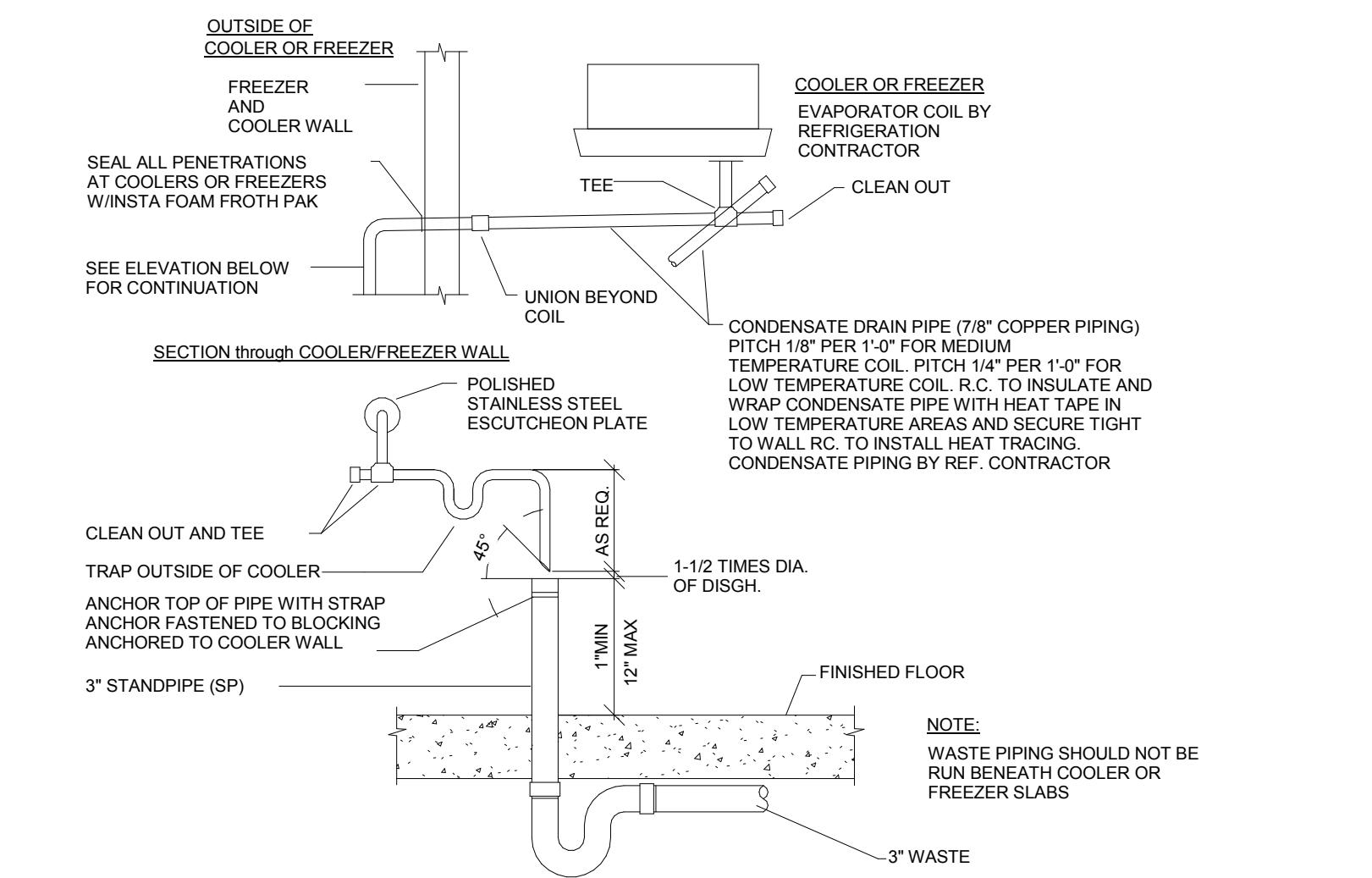
1 FLOOR SINK DETAIL - ON GRADE
SCALE: NONE



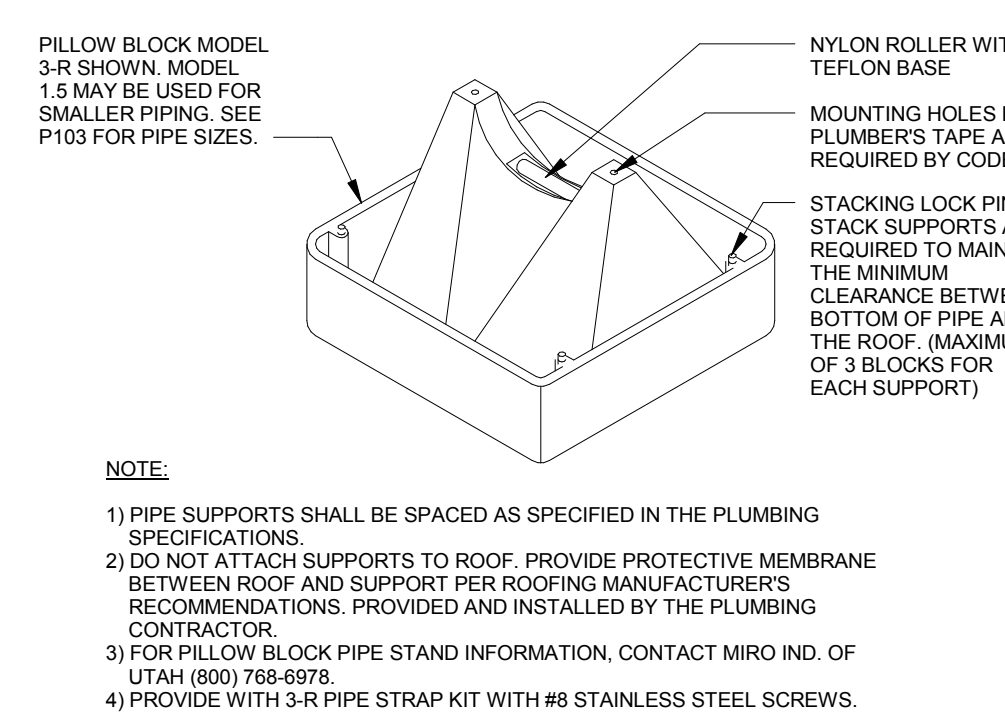
2 WALL CLEANOUT - FINISHED ROOMS
SCALE: NONE



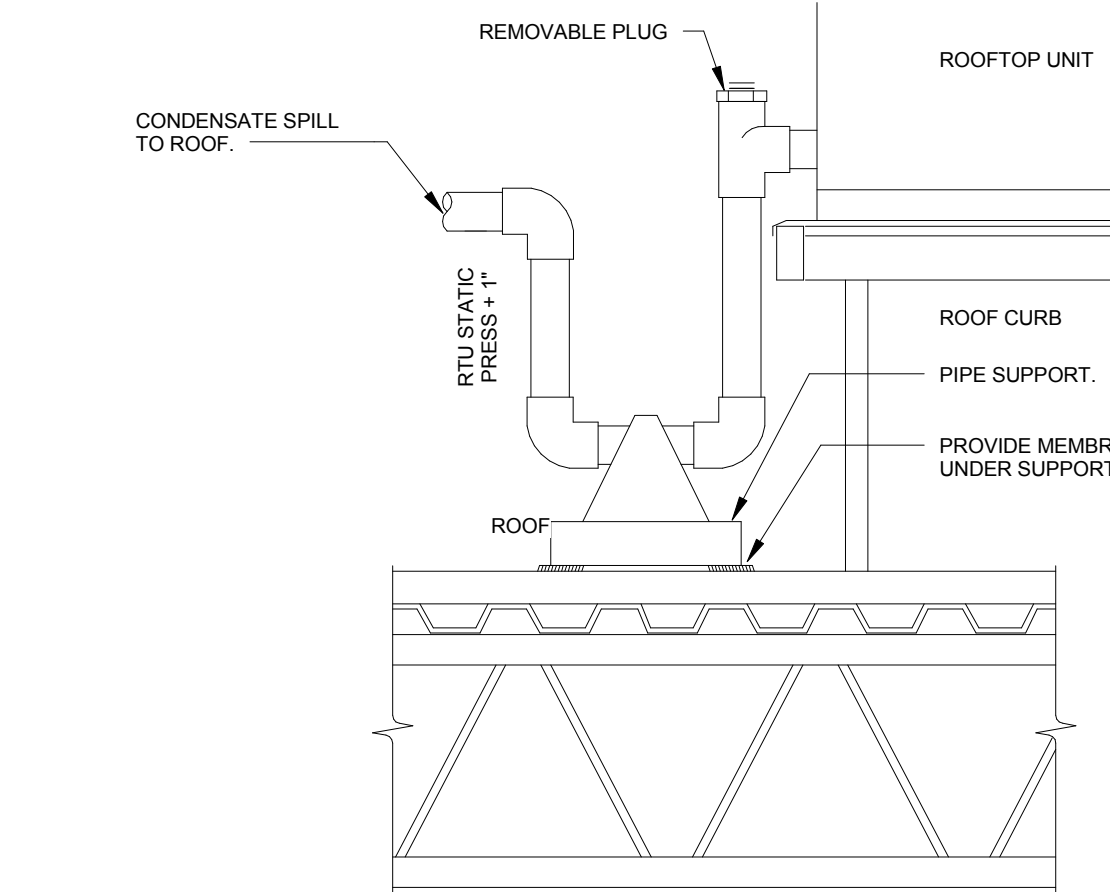
3 AIR ADMITTANCE VALVE
SCALE: NONE



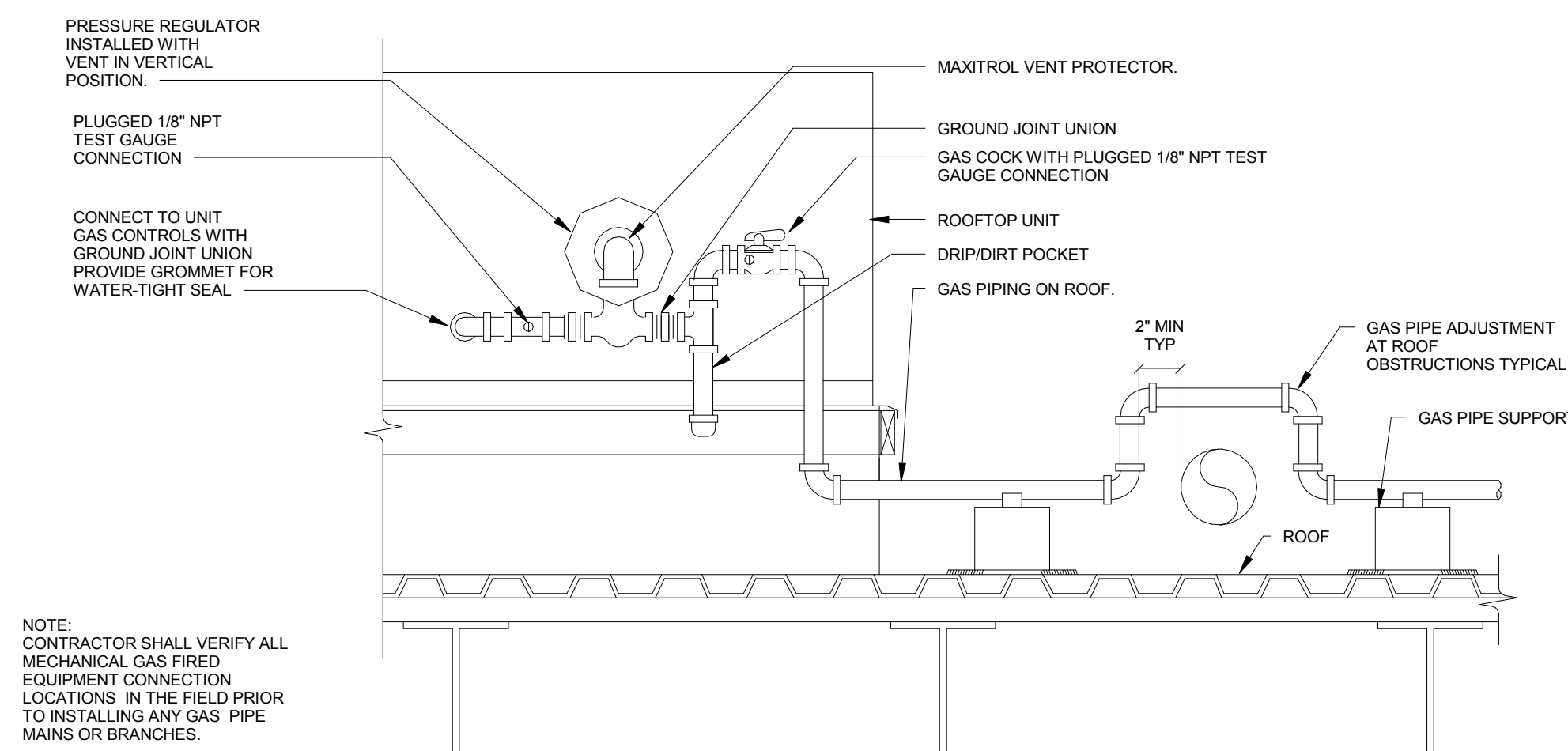
4 REFRIGERATION EVAPORATOR COIL DRAIN DETAIL
SCALE: NONE



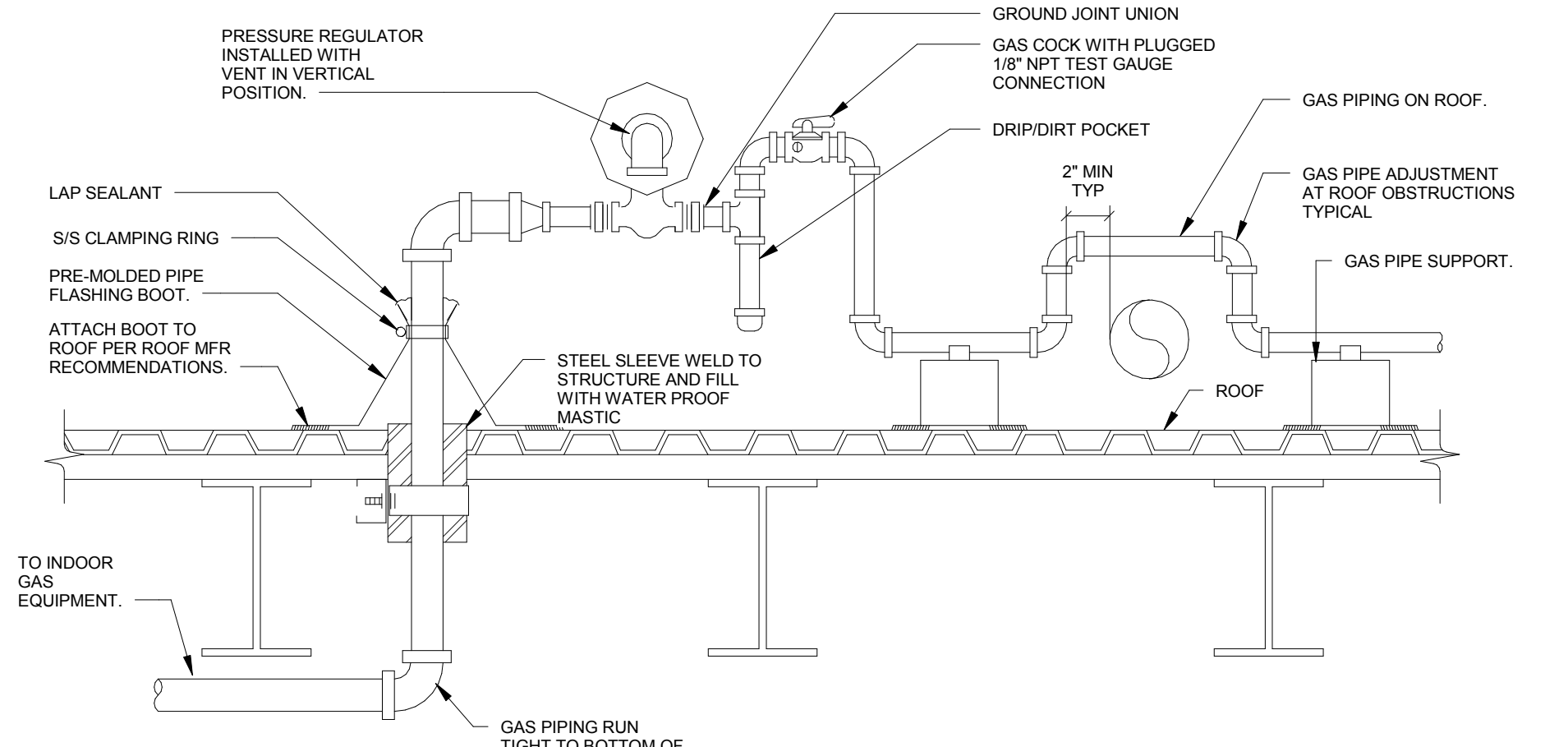
5 PIPE SUPPORT ON ROOF
SCALE: NONE



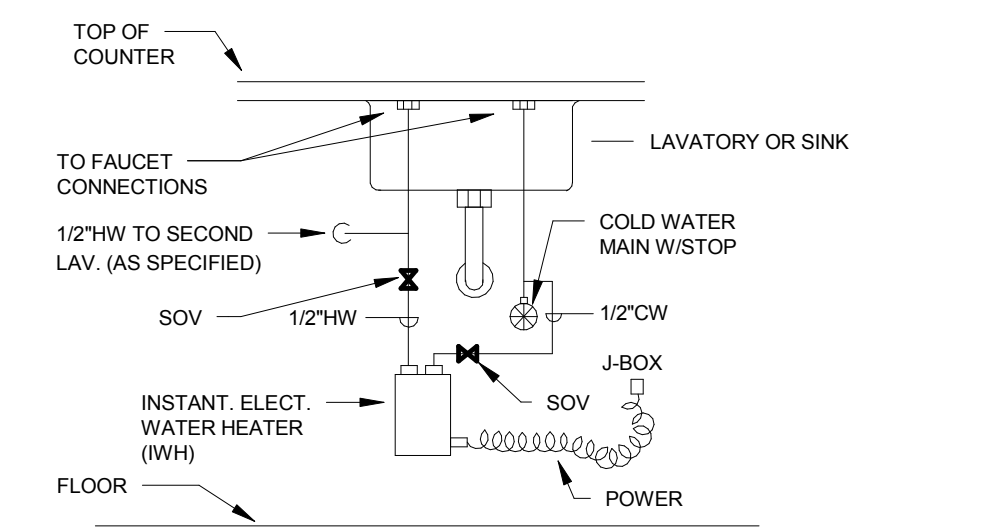
6 RTU/MAU CONDENSATE DRAIN
SCALE: NONE



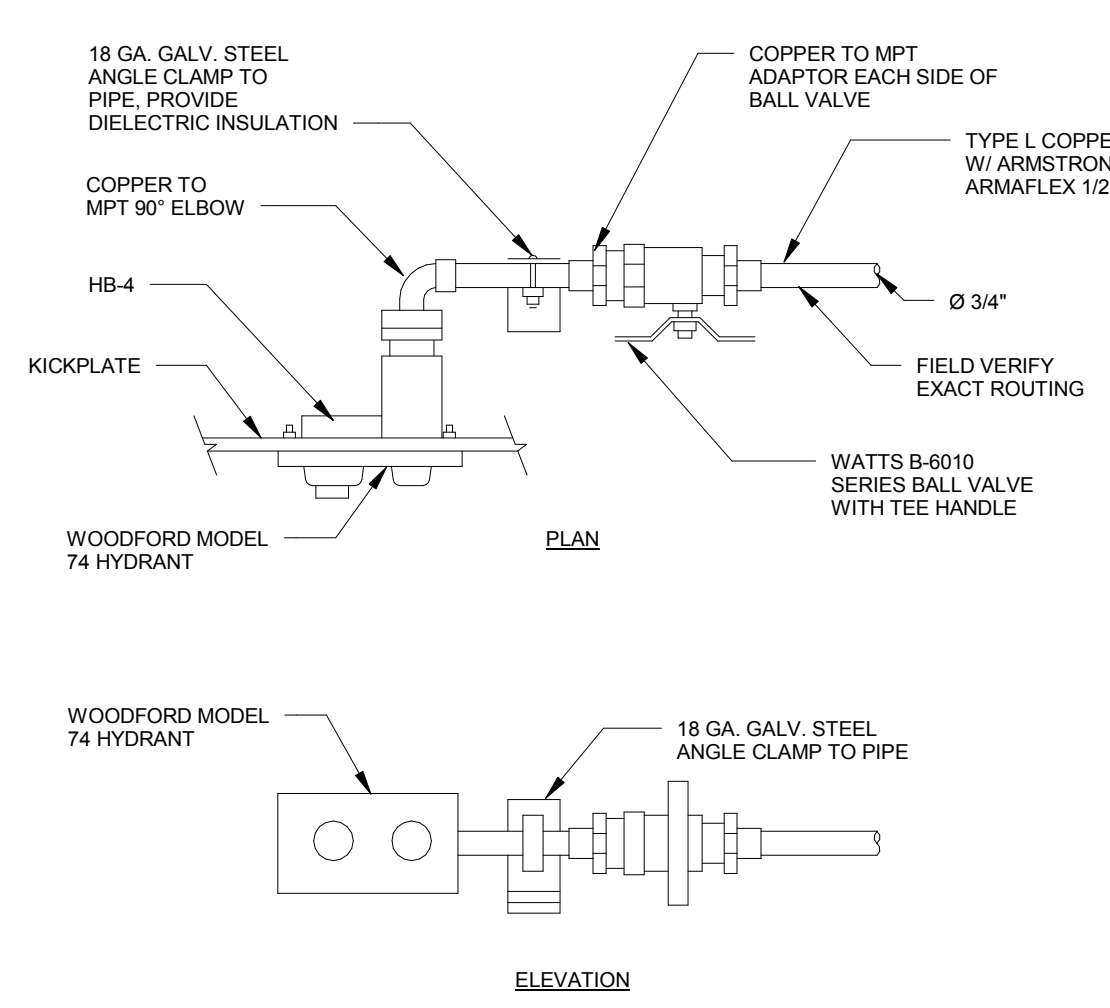
7 TYPICAL GAS PIPING TO RTU/MAU DETAIL
SCALE: NONE



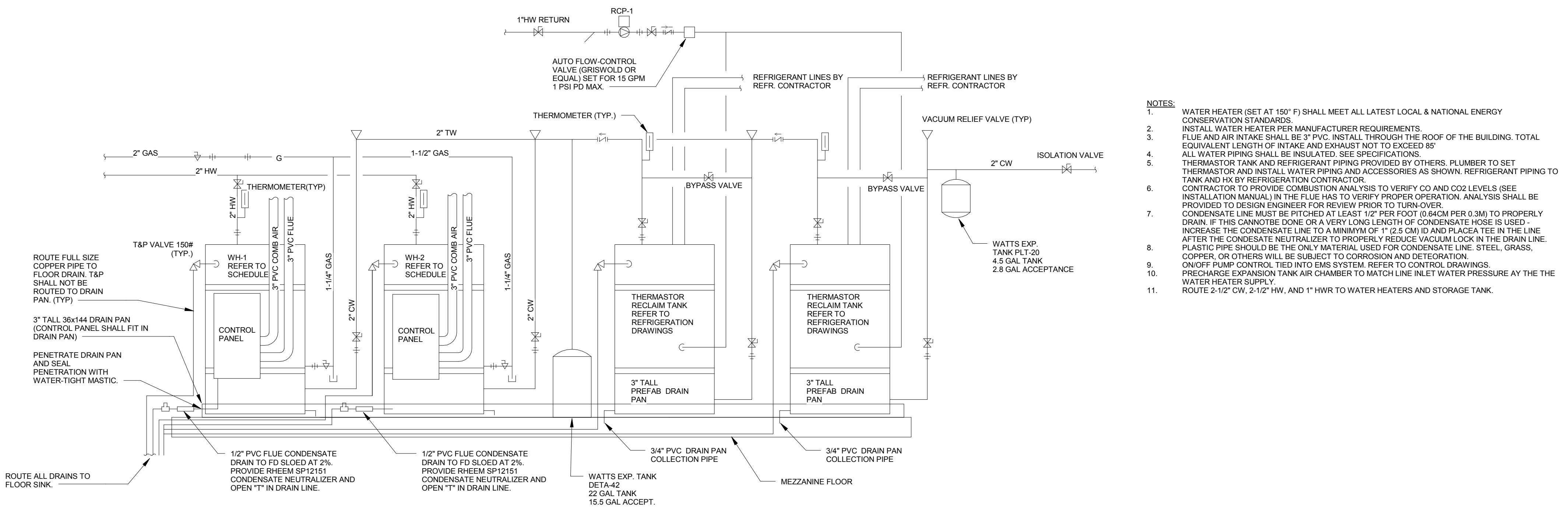
8 TYPICAL GAS PIPING THROUGH ROOF
SCALE: NONE



9 INSTANTANEOUS WATER HEATER DETAIL
SCALE: NONE



10 CASE HYDRANT DETAIL
SCALE: NONE



11 DOMESTIC WATER HEATER AND HEAT RECOVERY
UNIT DETAIL (2 HEATERS 2 THERMASTOS)
SCALE: NONE