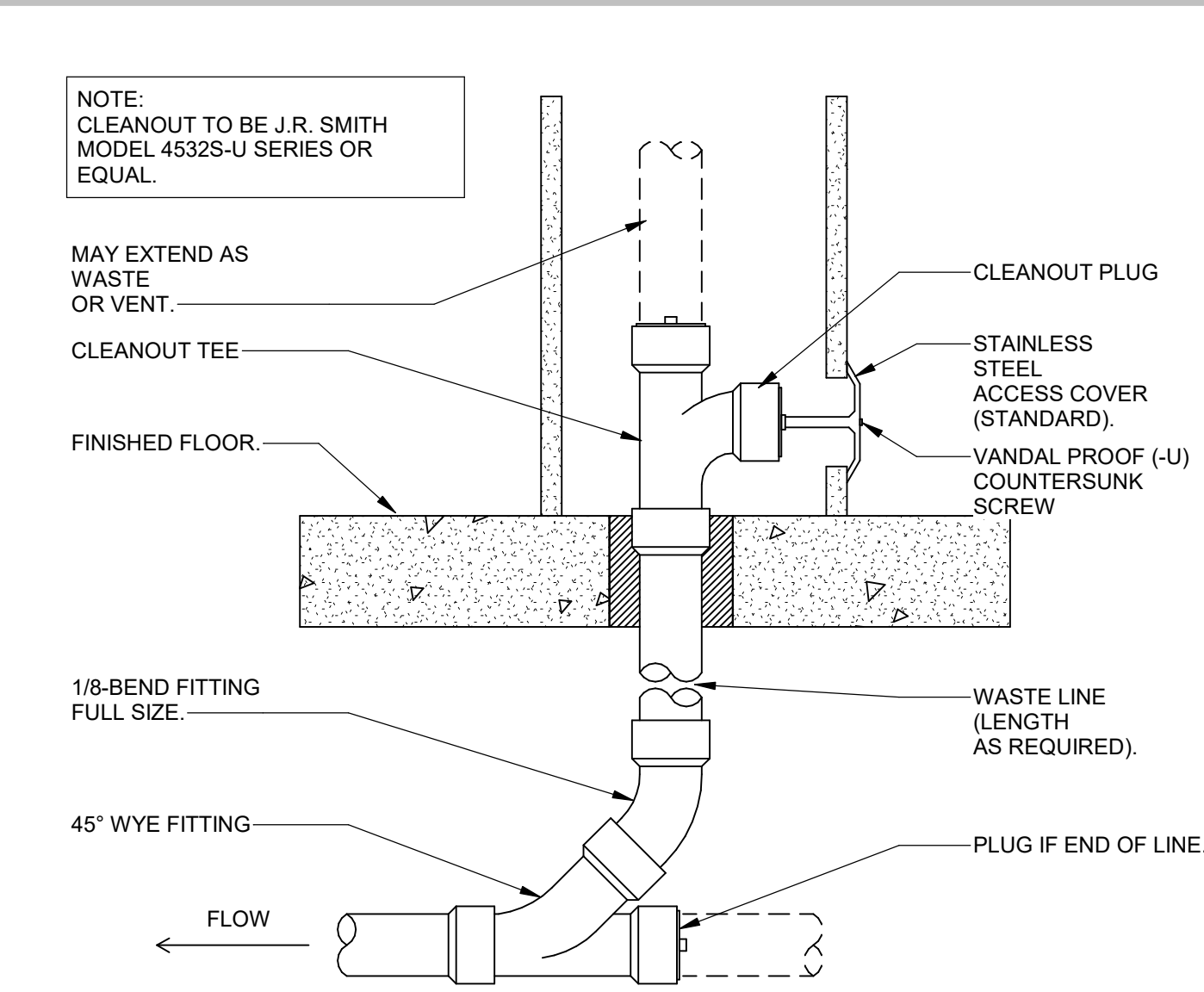
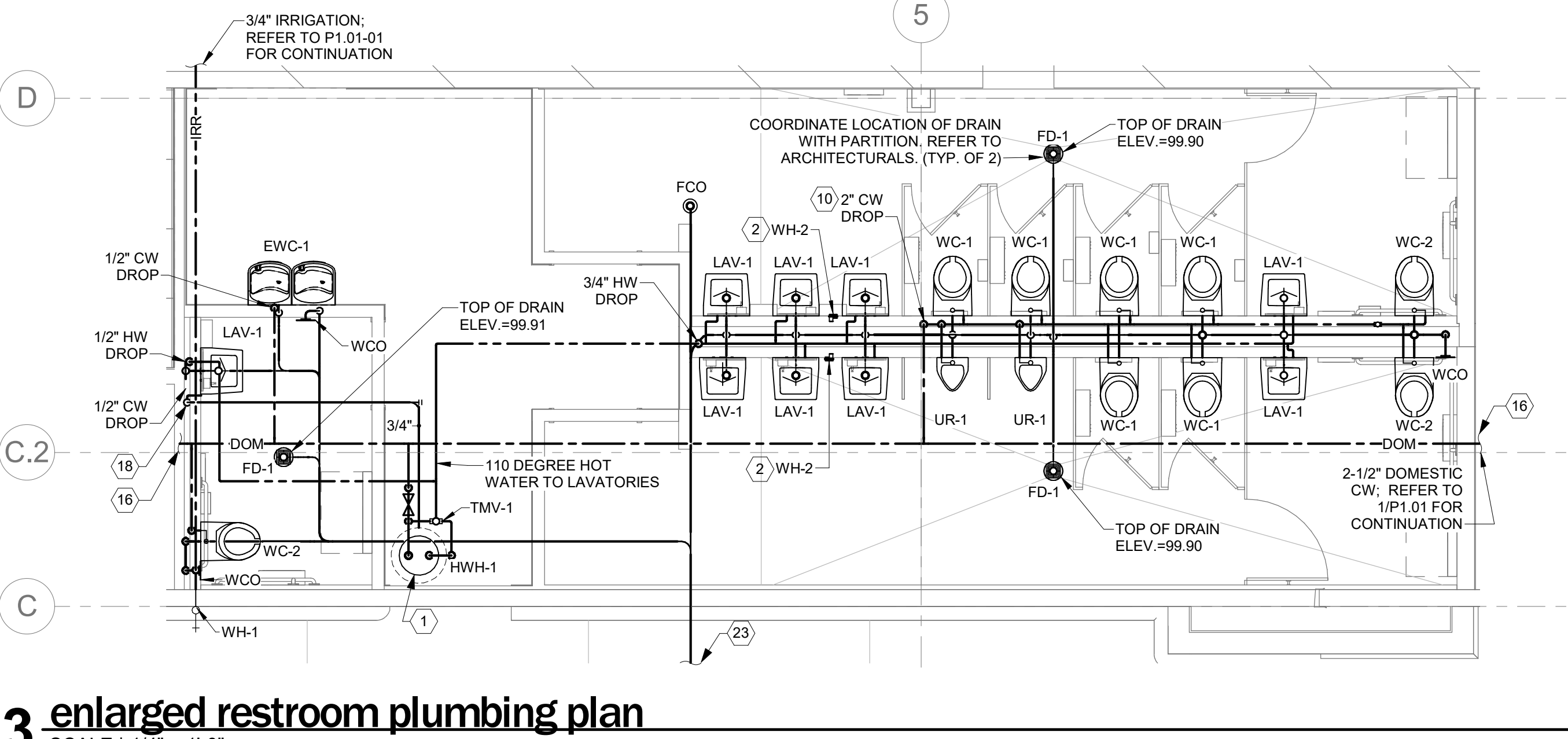
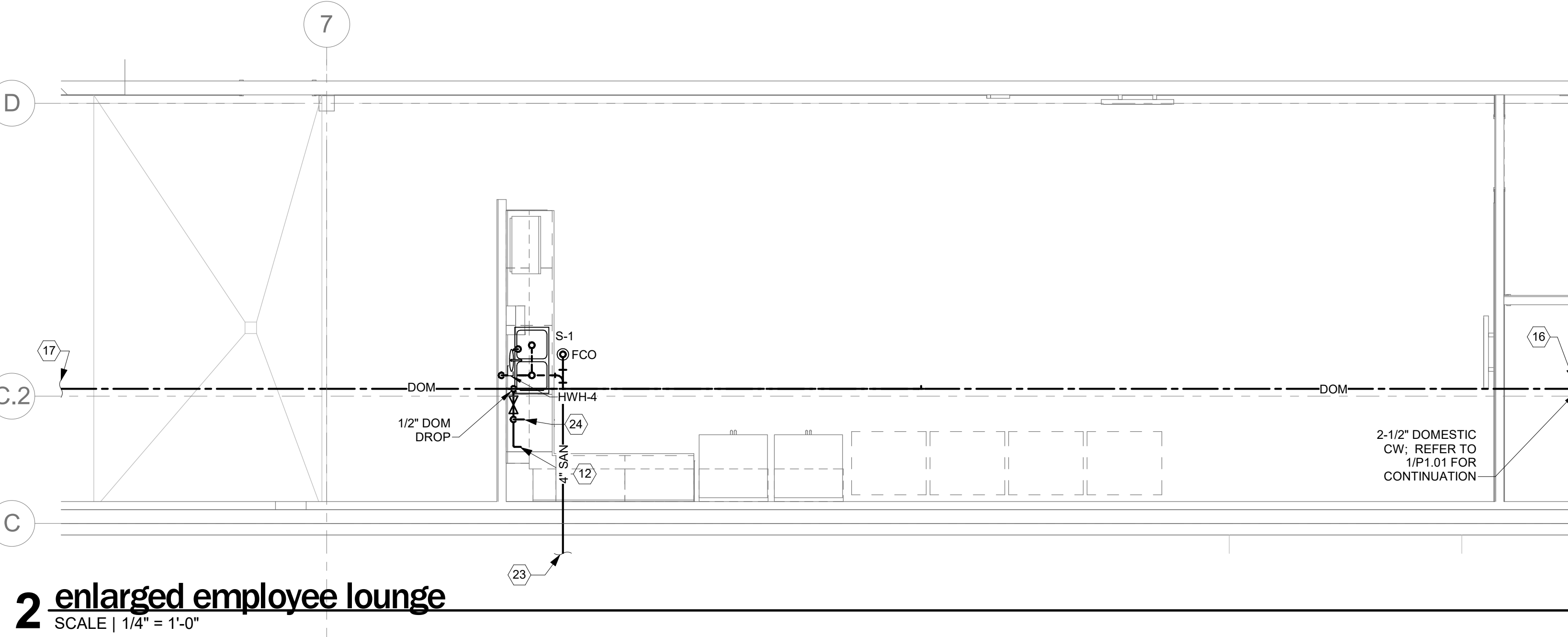
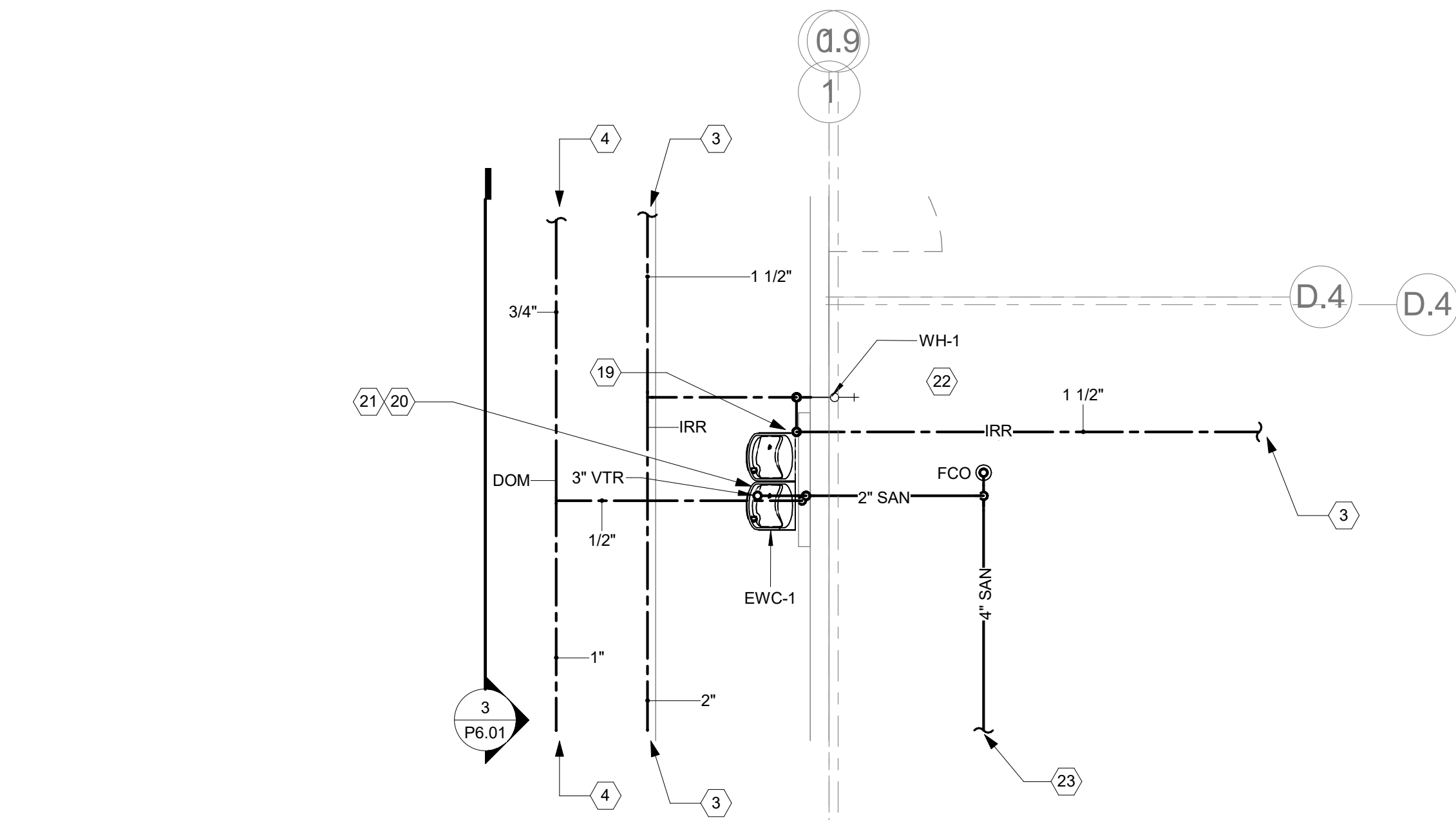
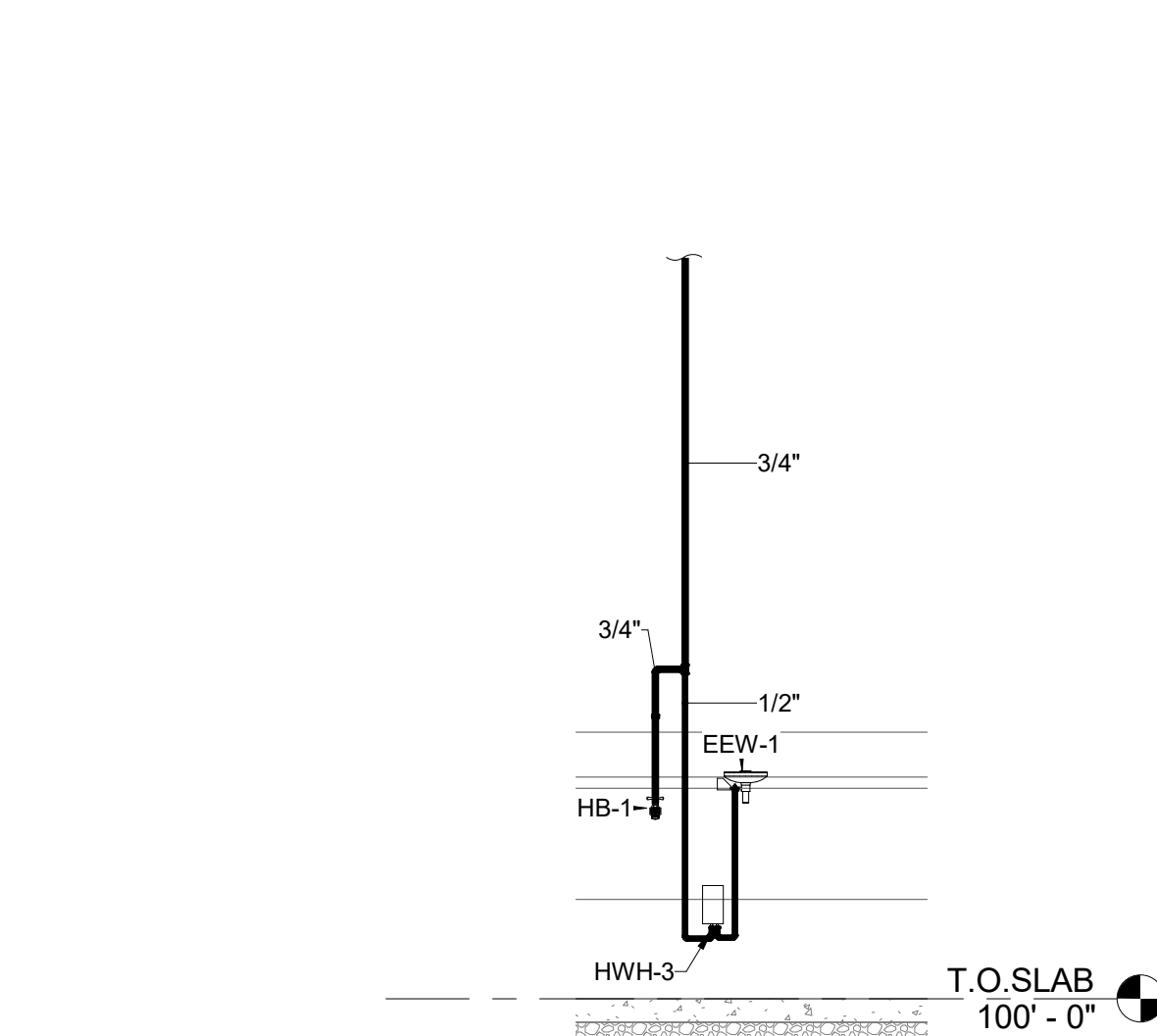


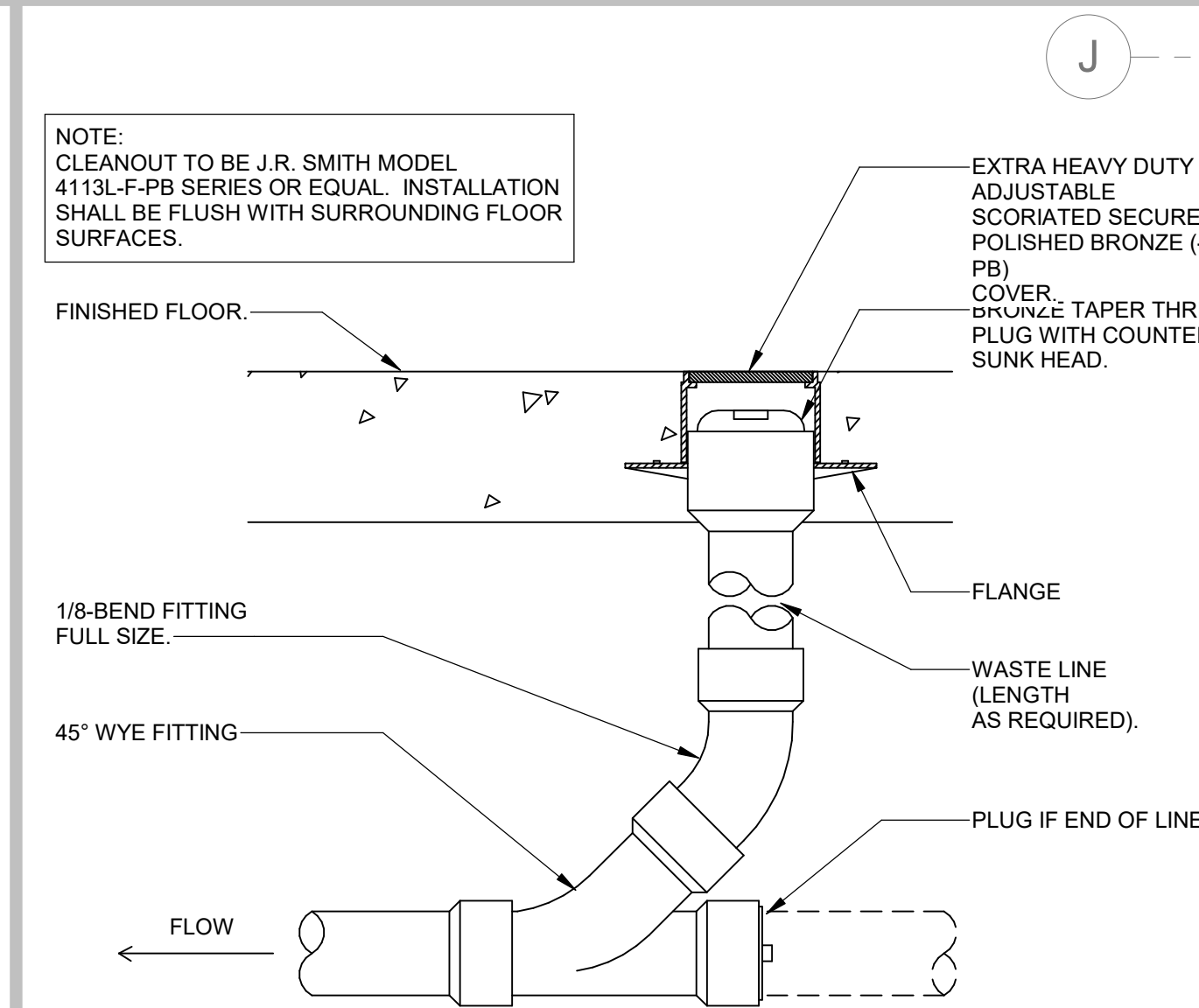
1 garden center plumbing plan  
SCALE | 1/16" = 1'-0"



5 typical wall cleanout (wco)  
SCALE | N.T.S.



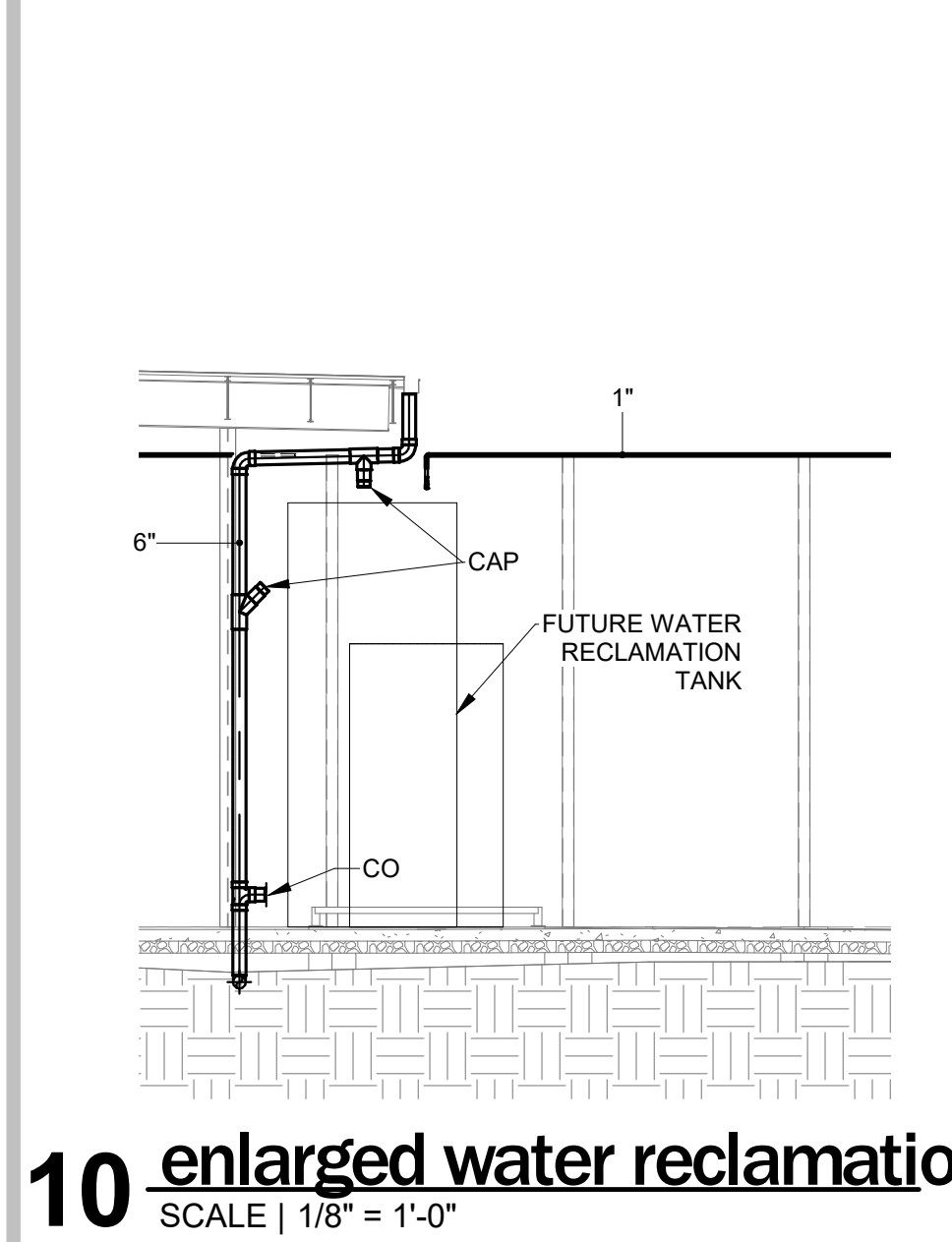
9 eyewash elev  
SCALE | 1/4" = 1'-0"



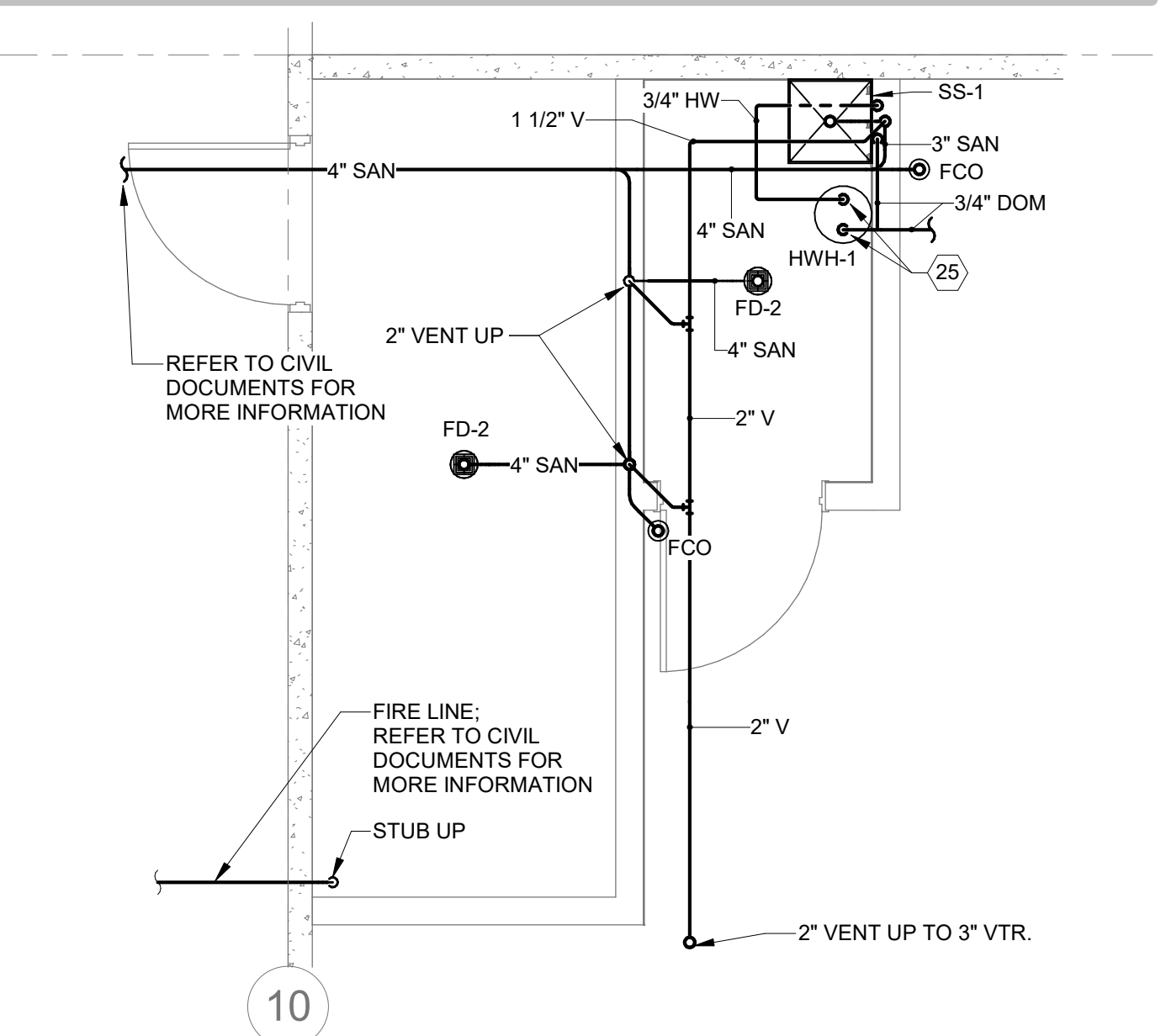
6 typical floor cleanout (fco)  
SCALE | N.T.S.

### keyed notes

- 3/4" COLD AND HOT WATER DOWN TO WATER HEATER MOUNTED ON PLATFORM ABOVE ACCESSIBLE CEILING. MOUNT BOTTOM OF WATER HEATER AT 2'-0" ABOVE CEILING. PROVIDE MIN. 4" DEEP GALVANIZED STEEL DRAIN PAN UNDER WATER HEATER. DRAIN T&P VALVE TO DRAIN PAN. COORDINATE WITH OTHER TRADES. REFER TO DETAIL P6.01-04 FOR MORE INFORMATION.
- PLACE ENGRAVED PLASTIC LABEL AT HOT WATER HOSE BIBB STATING "CAUTION HOT WATER - USE WITH EXTREME CARE".
- 2" IRRIGATION. REFER TO P1.01-01 FOR CONTINUATION.
- 1" DOMESTIC CW. REFER TO P1.01 FOR CONTINUATION.
- ROUTE PIPING THRU BAR JOIST AREA ABOVE BOTTOM CHORD OF THE JOIST. PROVIDE ALLOWANCE FOR SLOPE REQUIRED FOR SYSTEM DRAINAGE.
- 3/4" COLD WATER DROP ALONG COLUMN FOR HOSE BIBBS (HB-1) AND HOSE REEL (HR-1 AND 1A). REFER TO DETAIL P5.01-03 FOR MORE INFORMATION.
- CONTRACTOR TO OFFSET 6" RAINWATER CONDUCTOR FROM GUTTER TO DOWNSPOUT. REFER TO DETAIL P5.01-14 FOR MORE INFORMATION. ROUTE DOWNSPOUT IN COLUMN WEB WHERE POSSIBLE.
- HOSE BIBB AND REEL MOUNTED TO FENCE COLUMN FACING GARDEN CENTER. REFER TO DETAIL P5.01-03. PROVIDE UNISTRUT SUPPORT FOR MOUNTING IF NO COLUMN IS PRESENT AT THAT LOCATION.
- PIPING FOR IRRIGATION RUN TIGHT TO FENCE. SLOPED FOR WINTERIZATION DRAINAGE. ROUTE TO HOSE BIBB (HB-1) AND HOSE REEL (HR-1 AND 1A).
- PROVIDE ACCESS PANEL FOR SHUT OFF VALVE AND WATER HAMMER ARRESTOR(WHA). COORDINATE FINAL LOCATION OF ACCESS PANEL WITH ALL DISCIPLINES AS TO ENSURE A COMPLETELY UNOBSTRUCTED ACCESS TO THE ACCESS PANEL.
- WATER DROP AND ALL SHUTOFF VALVES SHALL BE LOCATED ON THE INSIDE OF THE GARDEN CENTER FENCE. ONLY THE HOSE BIBB AND HOSE REEL SHALL PENETRATE THE FENCE.
- 1/2" COLD WATER UNDER COUNTER AT 20'A.F.F. FOR FUTURE CONNECTION AT BAR SINK TO COFFEE MACHINE. COORDINATE EXACT LOCATION WITH THE HOME DEPOT PROJECT MANAGER. PROVIDE ANGLE STOP AND COPPER TUBING.
- HOSE BIBB AND REEL MOUNTED COLUMN.
- CONTRACTOR TO OFFSET IRRIGATION LINE UP FROM LOW CANOPY TO THE NEXT HORIZONTAL CROSS MEMBER ON HIGH FENCING. ROUTE ALONG HORIZONTAL MEMBER WITH SLOPES AS SHOWN ON PLAN.
- 3" SANITARY. REFER TO P4.01-03 FOR CONTINUATION.
- 2-1/2" DOMESTIC CW. REFER TO P1.01 FOR CONTINUATION.
- 1" DOMESTIC CW. REFER TO P1.01-01 FOR CONTINUATION.
- 3/4" COPPER PIPING FROM DRAIN PAN UNDER WATER HEATER ON PLATFORM ABOVE CEILING. ROUTE DRAIN PIPING ABOVE CEILING AND DOWN CONCEALED IN WALL TO CONNECT TO TAIL PIECE AT LAVATORY.



10 enlarged water reclamation  
SCALE | 1/8" = 1'-0"



7 enlarged fire riser room / utility room  
SCALE | 1/4" = 1'-0"

- REFER TO DETAIL P6.01-3 FOR GARDEN CENTER IRRIGATION PIPING DRAINAGE INSTALLATION. PROVIDE PERMANENTLY ATTACHED "BAKELITE" TAG ADJACENT TO VALVING FOR WINTERIZATION PROCEDURES. TAG TO BE ENGRAVED WITH 1/4" LETTERING (ORANGE OR BLACK) READING AS FOLLOWS:  
"WINTERIZATION PROCEDURES"  
A. CLOSE "EXTERIOR SHUT-OFF VALVE".  
B. ATTACH GARDEN HOSE TO HOSE END AT "DRAIN VALVE" AND ROUTE TO NEAREST FLOOR DRAIN OR OUTSIDE TO AN ACCEPTABLE DRAINING AREA.  
C. IN THE GARDEN CENTER, SHIFT VACUUM BREAKER DRAIN SLEEVES AT HOSE BIBBS TO THE OPEN POSITION AND OPEN HOSE BIBB TEE HANDLES.  
D. OPEN "WALL HYDRANT" TO DRAIN ENTIRE SYSTEM.  
E. AFTER ENTIRE SYSTEM IS COMPLETELY DRAINED SHIFT VACUUM BREAKER DRAIN SLEEVES BACK TO THE CLOSED POSITION. CLOSE THE HOSE BIBB TEE HANDLES, AND THEN CLOSE THE "WALL HYDRANT VALVE".  
F. CLOSE "G.C. SHUT OFF VALVE".  
G. RE-OPEN EXTERIOR SHUT OFF VALVE.  
H. TO REFILL EXTERIOR GARDEN CENTER SYSTEM OPEN "G.C. SHUT OFF VALVE".
- 1/2" DOMESTIC WATER DROP, 2" WASTE AND 1-1/2" VENT IN CHASE FOR CONNECTION TO ELECTRIC WATER COOLER (EWC-1). EXTEND VENT TO 3" VENT THRU ROOF. PROVIDE ACCESS PANELS AS REQUIRED FOR CLEANOUTS AND SHUT OFF VALVES.
- REFER TO ARCHITECTURAL ELEVATION FOR PLACEMENT OF EQUIPMENT IN THIS AREA.
- 3/4" COLD WATER DOWN ALONG WALL TO WALL HYDRANT (WH-1) AT 36" A.F.F. PROVIDE SHUT-OFF VALVE IN SUPPLY AT 48" A.F.F. REFER TO DETAIL P5.01-01 FOR MORE INFORMATION.
- 4" SANITARY. REFER TO P1.01-01 FOR CONTINUATION.
- 1/2" COLD WATER UNDER COUNTER AT 20'A.F.F. FOR FUTURE CONNECTION AT BAR SINK TO WATER FILTER TO SERVICE GLASS FILLER. COORDINATE EXACT LOCATION WITH THE HOME DEPOT PROJECT MANAGER. PROVIDE ANGLE STOP AND COPPER TUBING.