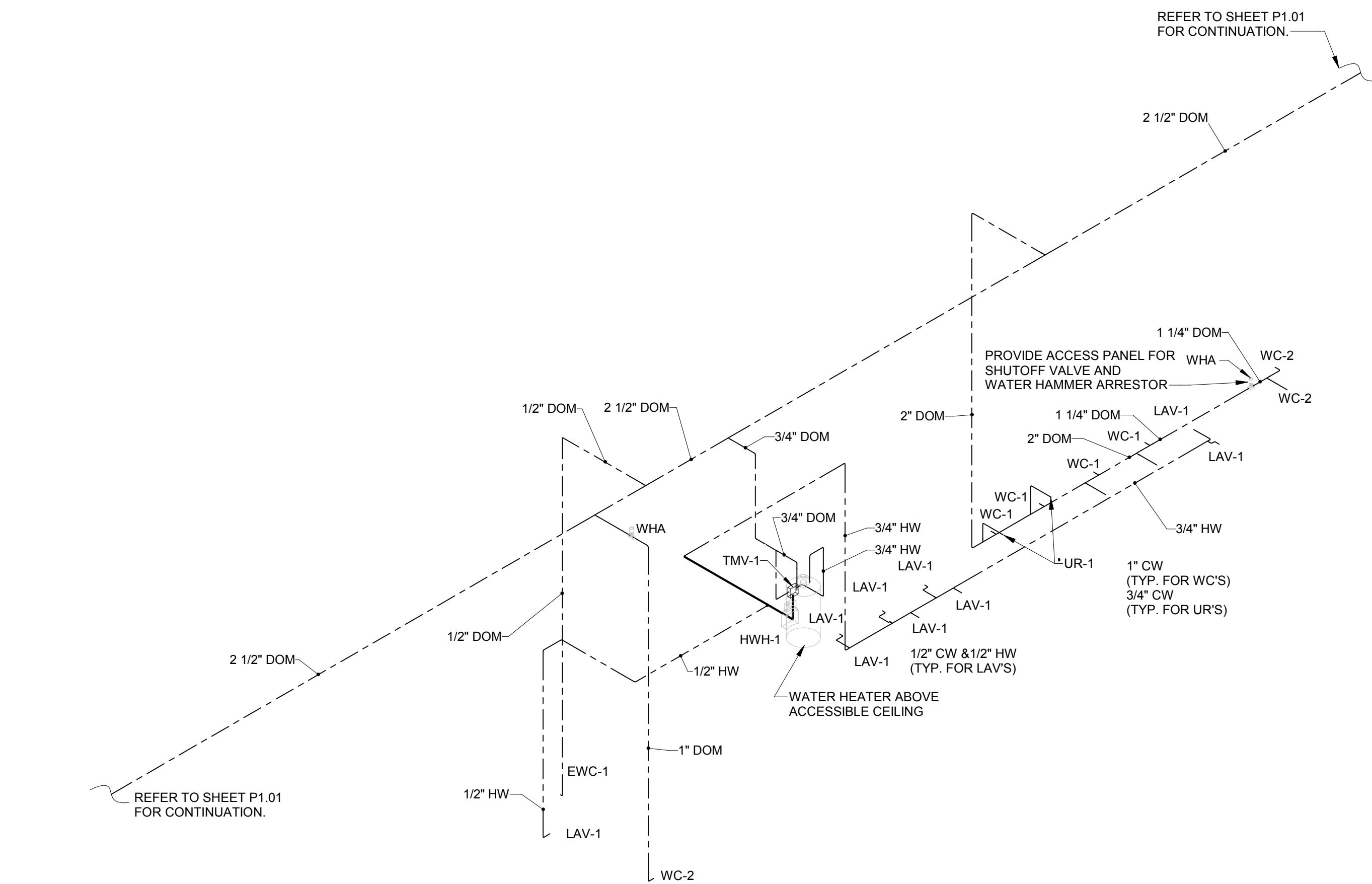


## 5 sanitary riser

SCALE | N.T.S.



## 6 water piping riser

SCALE | N.T.S.

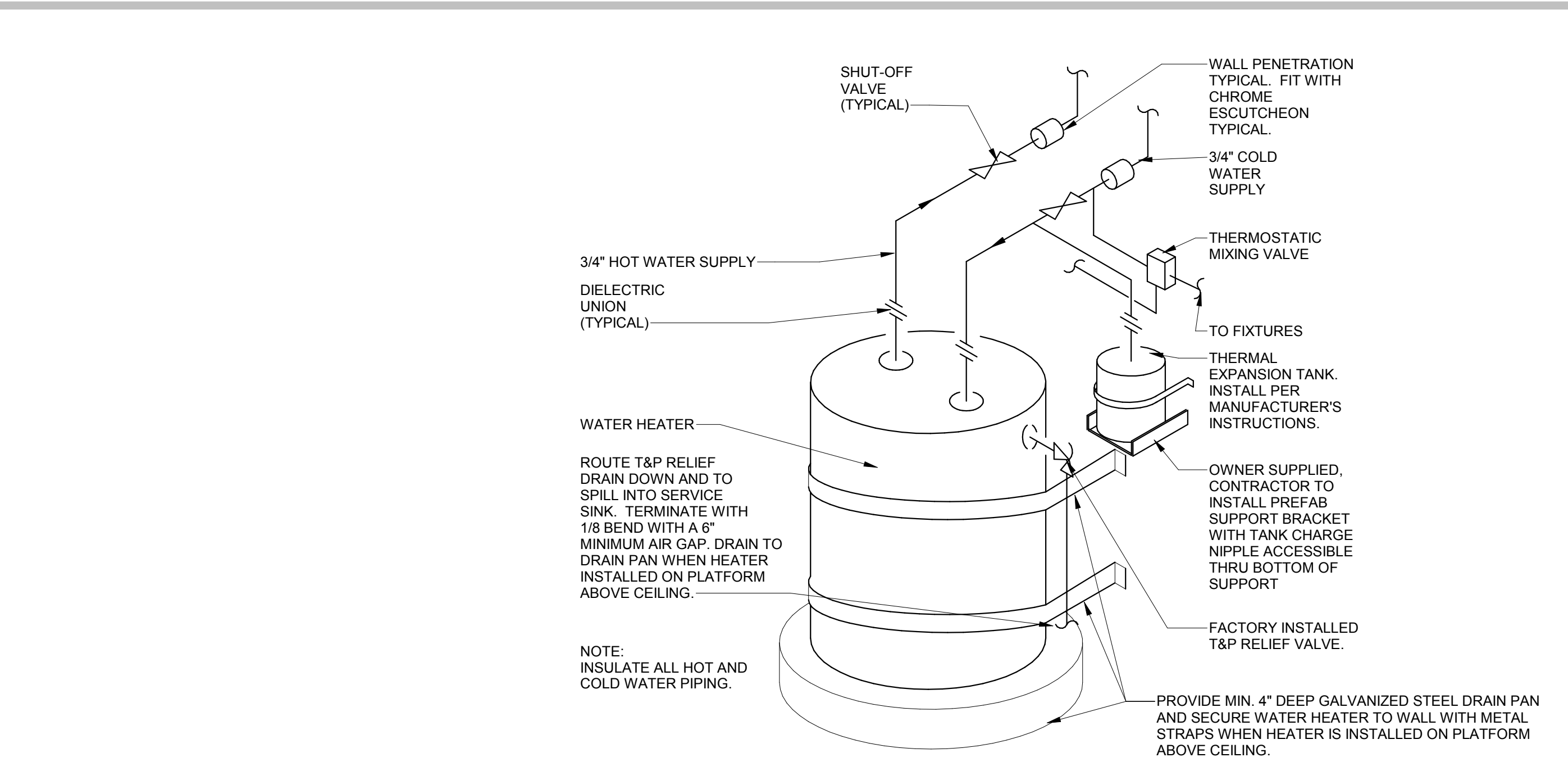
## plumbing fixture schedule

WT	EQUIPMENT	DESCRIPTION / ACCESSORIES	COLD WATER	HOT WATER	DRAIN	MANUFACTURER	MODEL
CB-1	CATCH BASIN	19.6"x12.8" POLYMER CONCRETE CATCH BASIN WITH ADA COMPLIANT CAST IRON GRATE SUITABLE FOR FORK LIFT TRAFFIC. BASIN TO INCLUDE TRASH BUCKET AND WILL ACCOMMODATE 6", 8" AND 10" PIPE	-	-	AS NOTED	POLYDRAIN	2611
CB-2	CATCH BASIN	19.6"x12.8" POLYMER CONCRETE CATCH BASIN WITH ADA COMPLIANT CAST IRON GRATE SUITABLE FOR FORK LIFT TRAFFIC. BASIN TO INCLUDE TRASH BUCKET AND WILL ACCOMMODATE 6", 8" AND 10" PIPE	-	-	AS NOTED	POLYDRAIN	2610
CB-3	CATCH BASIN	36"x36" PRECAST CATCH BASIN WITH HEAVY DUTY GRATE. CLEAR INSIDE DIMENSIONS OF CATCH BASIN SHALL BE 36" X 36" X 54" DEEP. PROVIDE MULTIPLE SECTIONS AS NEEDED. SEAL JOINTS BETWEEN SECTIONS WATER TIGHT.	-	-	AS NOTED	OLDCASTLE PRECAST GUARDIAN	CB-3636
EEW-1	EMERGENCY EYE WASH	WALL MOUNTED, TWIN SPRAY HEADS (3 GPM AT 20 P.S.I.). ALL STAINLESS STEEL WITH ADJACENT SIGN ("EMERGENCY EYE WASH"). INSTALL 38" TO 40" A.F.F.	3/4"	-	1 1/2"		G1814
EEW-2	EEW-1 STORAGE CART	PORTABLE EYEWASH DISPOSAL CART WITH CONCAVE TOP SURFACE WITH CENTER DRAIN, DUAL WHEELS, AND MOLDED HANDLE FOR EASY PORTABILITY.	-	-	-	HONEYWELL	32-000511-0000
EW-C1	SPLIT LEVEL WATER COOLER	WALL HUNG SPLIT LEVEL ALL STAINLESS STEEL CABINET, 8.0 GPH, 1/5 H.P.-120V-1Ø. PROVIDE CHROME PLATED ANGLE STOP, FLEX SUPPLY AND P-TAP AND WADE CARRIER #440. EQUIPPED AND INSTALLED FOR ADA HANDICAP ACCESSIBILITY.	3/8"	-	1 1/2"	ELKAY	E2STLR-8S
FD-1	FLOOR DRAIN	6" POLISHED BRONZE SQUARE STRAINER, VANDAL PROOF WITH TRAP SEAL DEVICE.	-	-	3"	WADE	1103 G6 3NH
FD-2	FLOOR DRAIN	6" POLISHED BRONZE SQUARE STRAINER, HINGED GRATE, VANDAL PROOF WITH TRAP SEAL DEVICE.	-	-	4"	WADE	1104 G6 4NH
HB-1	HOSE BIBB	NO-KINK HOSE BIBB WITH TEE HANDLE AND TAMPER PROOF VACUUM BREAKER. PROVIDE AND INSTALL QUICK DISCONNECT AT EACH HOSE BIBB (I.R. NELSON OR EQUAL MANUFACTURER).	3/4"	-	-	WATTS	SCB-2
HR-1	HOSE REEL	AUTOMATIC REWIND, SUPREME DUTY HOSE REEL WITH 75 FEET OF 5/8" TOP GRADE WATER HOSE (RED), REEL INCLUDES A 2-3 FOOT CONNECTION HOSE AND MOVEABLE HOSE GUIDE ARM. MOUNT TO COLUMN WITH SWING BRACKET #15725.	3/4"	-	-	COXREELS	CP-0605-1 5/8
HR-1A	HOSE REEL	AUTOMATIC REWIND, SUPREME DUTY HOSE REEL WITH 75 FEET OF 5/8" TOP GRADE WATER HOSE (RED), REEL INCLUDES A 2-3 FOOT CONNECTION HOSE AND MOVEABLE HOSE GUIDE ARM. MOUNT TO COLUMN WITH SWING BRACKET #15725.	3/4"	-	-	COXREELS	CP-0605-1 5/8 (TSH-N-475)
HWH-1	WATER HEATER	20 GALLON STORAGE, 21 GPH RECOVERY AT 90° TEMPERATURE RISE. 4.5 KW-240V-1Ø. SET TEMPERATURE AT 140°F. PROVIDE WATTS #PLT-5 THERMAL EXPANSION TANK WITH PREFAB MOUNTING BRACKET. FACTORY INSTALLED T&P VALVE. INSTALL HEAT TRAPS ON INLET AND OUTLET PIPING.	3/4"	3/4"	-	RHEEM	PROE20 S2 RH
HWH-2	SINGLE POINT WATER HEATER	POINT-OF-USE WATER HEATER. 208V, 3.0 KW, 14.4 AMPS. UNIT PROVIDES 41°F TEMPERATURE RISE AT 0.5 GPM.	3/8"	3/8"	-	EEMAX	SP3208
HWH-3	SINGLE POINT WATER HEATER	POINT-OF-USE WATER HEATER. 208V-1Ø, 8.3 KW, 40 AMPS. UNIT PROVIDES 28°F TEMPERATURE RISE AT 2.0 GPM. UNIT SHALL BE SET TO PROVIDE 65°F TEMPERED WATER TO EYEWASH.	1/2"	1/2"	-	EEMAX	EX8208TEE
HWH-4	SINGLE POINT WATER HEATER	UNDER SINK POINT-OF-USE WATER HEATER. 277V-1Ø, 10 KW, 36 AMPS. UNIT PROVIDES 68°F TEMPERATURE RISE AT 1.0 GPM. PROVIDE WITH 1.0 GPM AERATOR.	-	-	-	EEMAX	EX100SL
INT-1	INTERIOR OIL INTERCEPTOR	FABRICATED STEEL BODY AND SEDIMENT PAN WITH STAINLESS STEEL BUCKET, PERFORATED BACK, SECONDARY SCREEN AND HEAVY DUTY CAST IRON GRATE. 77 POUNDS CAPACITY. 4" OUTLET, 2" VENT.	-	-	4"	WADE	5800-75
INT-2	EXTERIOR OIL INTERCEPTOR	FABRICATED STEEL BODY WITH INTEGRAL STORAGE COMPARTMENT. EXTRA HEAVY DUTY TRAFFIC COVER. 75 GPM FLOW RATE. 4" INLET AND OUTLET, 4" VENT. PROVIDE 4" CLEANOUT ACCESS. PROVIDE PLUGS AS NECESSARY FOR UNUSED VENT CONNECTIONS. FURNISH WITH WADE HIGH LEVEL ALARM BELL / LIGHT PANEL.	-	-	4"	WADE	5501-75 H-20
LAV-1	LAVATORY	20"x18" WALL MOUNTED LAVATORY WITH WADE 520-80 LAV CARRIER, AND GRID STRAINER. PROVIDE COMBINATION FAUCET / HAND DRYER, DYSON AIRBLADE TAP #AB-09 LV, SKU 25992-01, ONE-PIECE BRUSHED STAINLESS STEEL, WITH FACTORY PROVIDED 0.35 GPM AERATOR, 120V, 60 HZ, 1400W, 11.7A. CHROME PLATED ANGLE STOP, ESCUTCHEON, 811-120K 3/8" FLEX SUPPLIES AND MCGUIRE #8872 P-TAP. INSTALLED FOR ADA ACCESSIBILITY (AS INDICATED ON ARCHITECTURAL DRAWINGS). PROVIDE TRUEBRO #102-EZ ADA LAV GUARD. COORDINATE INSTALLATION OF DYSON MOTOR ASSEMBLY BELOW SINK WITH OTHER TRADES AND ADA REQUIREMENTS. SEE NOTES BELOW FOR DYSON FIXTURE PROCUREMENT.	-	1/2"	1 1/4"	KOHLER	K-2084-0
LAV-2	HAND WASH SINK	18"x17" #18 GAUGE, TYPE 304 STAINLESS STEEL WASH-UP LAVATORY. OVAL COMPARTMENT WITH ANTI-SPLASH RIM. FURNISHED WITH STAINLESS STEEL SUPPORTING BRACKETS AND STAINLESS STEEL STAMPED HOUSING WITH RUBBER GASKET. PROVIDE WITH DECK MOUNT 4" CENTER WITH 4" GOOSENECK FAUCET MODEL #LK406RM4T. PROVIDE SHUT OFF VALVE, 3/8" FLEX SUPPLIES AND P-TAP. EQUIPPED AND INSTALLED FOR ADA ACCESSIBILITY (AS INDICATED ON ARCHITECTURAL DRAWINGS). PROVIDE TRUEBRO #102-EZ ADA LAV GUARD.	3/8"	3/8"	1 1/2"	ELKAY	ELV1817C53
RF-1	ROOF HOSE BIBB	FREEZELESS AUTOMATIC DRAINING, VACUUM BREAKER BACKFLOW PROTECTED WITH UNION ELBOW (SEE DETAIL). CONTRACTOR TO PROVIDE WITH INLET TO MATCH SPECIFIED SIZE.	3/4"	-	-	WOODFORD	25 SERIES
S-1	DOUBLE BOWL SINK	UNDERMOUNT 18 GAUGE STAINLESS STEEL DOUBLE BOWL WITH (2) MCGUIRE 155WC GRID DRAINS, MOEN KLEO SINGLE-HANDLE PULL-DOWN FAUCET #CA8701SRS. PROVIDE CHROME PLATED ANGLE STOP, FLEX SUPPLIES AND P-TAP WITH CLEANOUT. PROVIDE UNDER CABINET WATER FILTRATION SYSTEM AND DISPENSER. T&S BRASS, DECK MOUNTED GLASS FILLER, #B-1210-01, ADJUSTED TO 1.0 GPM, AND EVERPURE QC71 SINGLE HEAD WATER FILTER WITH EVERPURE MICROGUARD PRO 4 FILTER CARTRIDGE.	1/2"	1/2"	2"	HOUZER	MD-3109
SP-1	SUMP PUMP	SINGLE SEAL, NON-AUTOMATIC SUMP PUMP. PROVIDE WITH ZOELLER THREE PHASE SIMPLEX PUMP CONTROL WITH THREE FLOATS FOR OFF-NORMAL PUMP TO BE 6 HP, 480V/3Ø, AND CAPABLE OF PUMPING 430GPM AT 15 FT. HD. PUMP SHALL HAVE 4" DISCHARGE. PROVIDE 4" CHECK VALVE IN DISCHARGE PIPE. PROVIDE SUPPORT RAIL SYSTEM.	-	-	-	ZOELLER	651
SS-1	SERVICE SINK	24"x24" MOLDED-STONE MOP SERVICE BASIN WITH STAINLESS STEEL DOME STRAINER. MODEL #B30-AA CHROME PLATED SERVICE FAUCET WITH VACUUM BREAKER, INTEGRAL STOPS, AND WALL BRACE. PROVIDE 3.0 GPM FLOW RESTRICTOR. PROVIDE #MSG2424 STAINLESS STEEL WALL GUARD AND #E-77-AA VINYL BUMPERGUARD.	3/4"	3/4"	3"	FIAT PRODUCTS	MSB-2424
TD-1	TRENCH DRAIN	CHANNEL SLOPED DRAIN SYSTEM. PRECAST POLYMER CONCRETE CHANNEL OF INTERLOCKING DESIGN WITH A BUILT-IN SLOPE OF 0.5% AND WITH INTEGRAL METAL RAIL AND RADUSED BOTTOM. SLOTTED ADA DUCTILE IRON EXTRA HEAVY DUTY GRATE. LAST CHANNEL SHALL BE PROVIDED WITH END DRAIN CONNECTION TO CATCH BASIN, ASSE 1070 LISTED. SET FOR 105°F. INSTALL PER MANUFACTURER'S RECOMMENDATIONS	3/4"	3/4"	-	WATTS	LFMM
TMV-1	THERMOSTATIC MIXING VALVE		3/4"	3/4"	-	WATTS	LFMM
UR-1	URINAL	WALL HUNG WASHOUT WITH FLUSHING RIM, 3/4" TOP SPUD, WITH SLOAN #8188-0.5 (0.50 GPM) EXPOSED SENSOR OPERATED AUTO FLUSH VALVE AND WADE 400AM11 FIXTURE CARRIER. EQUIPPED AND INSTALLED FOR ADA HANDICAP ACCESSIBILITY (AS INDICATED ON ARCHITECTURAL DRAWINGS).	3/4"	-	2"	KOHLER	K-5016-ET
WC-1	WATER CLOSET	WALL HUNG ELONGATED FLUSH VALVE TOILET, 1-1/2" TOP SPUD WITH SLOAN SOLIS #8111 (1.6/1.1 GPM) EXPOSED SENSOR OPERATED AUTO DUAL FLUSH VALVE. BEMB 165C, ELONGATED OPEN FRONT SEAT (WHITE). WADE FIXTURE CARRIER 371 SERIES. VERIFY ON DRAWINGS IF DOUBLE CARRIER CAN BE UTILIZED.	1"	-	4"	KOHLER	K-4330
WC-2	WATER CLOSET	WALL HUNG ELONGATED FLUSH VALVE TOILET, 1-1/2" TOP SPUD WITH SLOAN SOLIS #8111 (1.6/1.1 GPM) EXPOSED SENSOR OPERATED AUTO DUAL FLUSH VALVE. BEMB 165C, ELONGATED OPEN FRONT SEAT (WHITE). WADE FIXTURE CARRIER 371 SERIES. VERIFY ON DRAWINGS IF DOUBLE CARRIER CAN BE UTILIZED.	1"	-	4"	KOHLER	K-4330
WH-1	WALL HYDRANT	FREEZELESS AUTOMATIC DRAINING, VACUUM BREAKER BACKFLOW PROTECTED WITH UNION ELBOW AND 3/4" MALE PIPE THREAD INLET. CONTRACTOR TO VERIFY WALL THICKNESS PRIOR TO ORDERING TO MINIMIZE PIPE EXTENDING INTO THE SALES AREA.	3/4"	-	-	WOODFORD	RB67 SERIES
WH-2	WALL HYDRANT, FROST PROOF	ANTI-CONTAMINATION CLOSE COUPLED LOOSE KEY BRASS CASTING WITH CHROME FINISH AND VACUUM BREAKER BACKFLOW PROTECTED. (HOT WATER)	-	3/4"	-	WOODFORD	65
WHA	WATER HAMMER ARRESTOR	T&P SIZE AS INDICATED	1 1/4"	-	-	WATTS	#15 SERIES

- NOTES:
- ALL FIXTURES LISTED IN THE PLUMBING FIXTURE SCHEDULE SHALL BE PURCHASED BY THE CONTRACTOR, AND INSTALLED BY THE CONTRACTOR.
  - FOR NATIONAL ACCOUNT PRICING AND PROCUREMENT OF THE DYSON AIRBLADE TAP COMBINATION FAUCET / HAND DRYER, CONTACT: ADAM FINN, KEY ACCOUNTS MANAGER, ADAM.FINN@DYSON.COM, USKEYACCOUNTS@DYSON.COM, M: (312)919-2077, NATIONAL ACCOUNT PROGRAM #Q-DYS00005094.
  - ALL FIXTURES, EQUIPMENT, TRIM, FITTINGS, ETC. SHALL COMPLY WITH LOCAL, STATE AND/OR FEDERAL REGULATIONS AND CODES, INCLUDING BUT NOT LIMITED TO WATER AND ENERGY CONSERVATION CODES, AND THE AMERICANS WITH DISABILITIES ACT (ADA). THE SCHEDULE REFLECTS FIXTURES AND EQUIPMENT WHICH ARE MINIMUM CRITERIA AND SHALL BE THE BASIS FOR CONTRACTORS BASE BID. WHERE SPECIFIED FIXTURES AND/OR EQUIPMENT ARE NOT IN COMPLIANCE WITH GOVERNING CODES AND REGULATIONS, THE CONTRACTOR SHALL PROVIDE AN ALTERNATE BID FOR THE SUBSTITUTIONS OF COMPLYING FIXTURES, EQUIPMENT, FITTINGS, ETC. THE ABSENCE OF AN ALTERNATE BID SHALL BE CONSTRUED TO MEAN THAT THE CONTRACTORS BASE BID INCLUDES ALL COSTS NECESSARY TO MEET ALL REGULATIONS AND CODES.

## plumbing symbol legend

— SAN —	SANITARY WASTE PIPING	— C —	CONDENSATE PIPING
----- V -----	VENT PIPING	— SHUT-OFF VALVE (S.O.V.) —	SHUT-OFF VALVE (S.O.V.)
— ST —	STORM SEWER PIPING	— GAS PRESSURE REGULATOR —	GAS PRESSURE REGULATOR
— FIRE —	FIRE PROTECTION SERVICE PIPING	— GAS COCK —	GAS COCK
— WTR —	DOMESTIC WATER SERVICE PIPING	— UNION —	UNION
— DOW —	COLD WATER PIPING (C.W.)	— D.S. —	DOWN SPOUT
— IRR —	IRRIGATION WATER PIPING (BUILDING)	— G.D. —	GUTTER DRAIN
— HW —	HOT WATER PIPING (H.W.)	— R.D. —	ROOF DRAIN
— G —	GAS PIPING (ABOVE ROOF)	— RWC —	RAINWATER CONDUCTOR
— G —	GAS PIPING (BELOW ROOF)	— FCO —	FLOOR CLEANOUT REFER TO DETAIL P4.01-06
— A —	COMPRESSED AIR PIPING	— WCO —	WALL CLEANOUT REFER TO DETAIL P4.01-05



## 4 water heater (HWH-1)

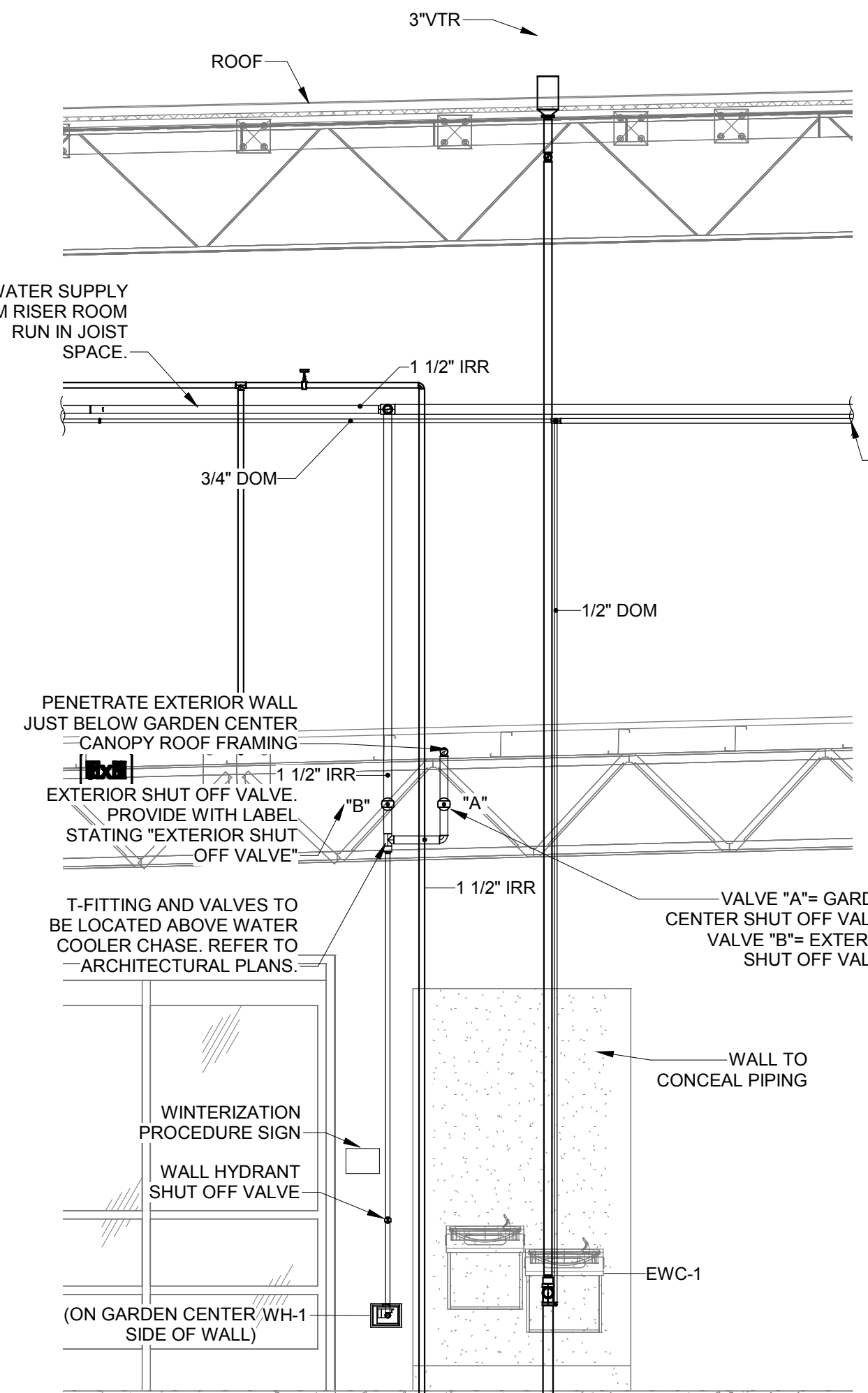
SCALE | N.T.S.

## general notes

- ANY CONFLICTS OF WORK SHALL BE BROUGHT TO THE PROJECT MANAGER'S ATTENTION BY THE PLUMBING CONTRACTOR PRIOR TO PURCHASE OF EQUIPMENT OR COMMENCEMENT OF WORK.
- PLUMBING CONTRACTOR SHALL COORDINATE HIS WORK WITH OTHER DISCIPLINES. ALL INVERTS SHALL BE VERIFIED IMMEDIATELY FOLLOWING AWARD OF CONTRACT. ALL INVERTS SHALL BE COORDINATED WITH STRUCTURAL FOOTINGS. REFER TO GENERAL NOTE "K" ON THIS SHEET.
- PLANS ARE DIAGRAMATIC AND LOCATIONS ARE APPROXIMATE. DO NOT SCALE THESE PLANS. REFER TO ARCHITECTURAL DRAWINGS FOR DIMENSIONS.
- PLUMBING CONTRACTOR SHALL VERIFY VOLTAGE, PHASE AND WIRE SIZE OF PLUMBING EQUIPMENT REQUIRING ELECTRICAL CONNECTION WITH ELECTRICAL CONTRACTOR PRIOR TO PURCHASE OF EQUIPMENT.
- PLUMBING CONTRACTOR SHALL HAVE A GOOD WORKING KNOWLEDGE AND ACQUAINTANCE OF THE EXISTING CONDITIONS OF THE JOB SITE.
- ALL PLUMBING MATERIALS AND INSTALLATION SHALL MEET THE LOCAL AND STATE CODES APPLICABLE.
- EXPOSED PIPES UNDER HANDICAPPED LAVATORIES SHALL HAVE AN "ADA" PROTECTIVE PIPE COVER "TRUEBRO" LAV GUARD #102-EZ. TO CONCEAL ALL PIPES AND FITTINGS.
- COORDINATE PIPING WITH SKYLIGHTS (WHERE PROVIDED) IN SALES AREA. DO NOT RUN PIPING UNDERNEATH OR OVER SKYLIGHTS.
- THE USE OF RISER CLAMPS TO SUPPORT VERTICAL PIPE ALONG WALLS, OR COLUMNS IS PROHIBITED. PROVIDE 8-LINE 22 STRUT AND 8-2000 PIPE CLAMPS ON 8'-0" CENTERS AND SUPPORT ALL PIPE RISES AT BASE OF RISER.
- SEE STRUCTURAL PLANS FOR DETAILS REGARDING ANY PIPING PARALLEL TO OR UNDER FOOTINGS AND PIERS.
- CARRIERS FOR WATER CLOSETS SHALL BE PROVIDED WITH THE NECESSARY ACCESSORIES TO ACCOMMODATE FRAME WALL. SEE ARCHITECTURAL DRAWINGS FOR WALL THICKNESS.
- PLUMBING CONTRACTOR SHALL EXECUTE ALL WORK SO THAT IT PROCEEDS WITH A MINIMUM OF INTERFERENCE WITH OTHER TRADES.
- THE CONTRACTOR SHALL BE RESPONSIBLE FOR ALL FINAL CONNECTIONS TO PLUMBING FIXTURES. THIS INCLUDES, BUT IS NOT LIMITED TO, PROVIDING (FURNISHING AND INSTALLING) ALL TRAPS, DRAINS, AND SUPPLIES WITH STOPS.
- THE CONTRACTOR SHALL VERIFY THAT ALL PIPING, AS SHOWN ON THESE DRAWINGS WILL NOT CONFLICT WITH ANY DRAINS, SCUTTLINGS, JOINTS, VENTS, EQUIPMENT, ETC.
- COORDINATE ROUTING AND LOCATION OF PIPING WITH DUCTWORK, LIGHTS, AND STRUCTURE. PIPING SHALL RISE, JOG OR OFFSET AS REQUIRED TO AVOID CONFLICTS. MODIFICATION OF INSTALLED PIPING TO RESOLVE CONFLICTS ARISING FROM LACK OF COORDINATION SHALL BE DONE BY THE PLUMBING CONTRACTOR AT NO EXPENSE TO THE OWNER.
- THE PLUMBING CONTRACTOR SHALL COORDINATE WITH THE GENERAL CONTRACTOR AND OTHER TRADES, ALL REQUIRED OPENINGS AND EXCAVATIONS. ALL REQUIRED OPENINGS IN FOUNDATIONS, FLOORS, WALLS, AND ROOFS SHALL BE DESIGNED INTO THE STRUCTURE INITIALLY BY THE USE OF SLEEVES, CURBS, ETC. CUTTING AND PATCHING SHALL BE HELD TO A MINIMUM.
- ALL ITEMS PROJECTING THROUGH THE ROOF SHALL BE FLASHED A MINIMUM OF 12" ABOVE THE ROOF. ALL VENTS SHALL BE A MINIMUM OF 10" FROM ANY OUTSIDE AIR INTAKE.
- PROVIDE DIELECTRIC COUPLINGS AT ALL DISSIMILAR METAL PIPE CONNECTIONS.
- CONTRACTOR SHALL PROVIDE SEISMIC BRACING FOR ALL DUCTWORK, PIPING, LIGHTING AND EQUIPMENT AS REQUIRED BY LOCAL CODES. ALL DUCTWORK AND PIPING SHALL BE PROVIDED WITH SEISMIC RESTRAINTS IN ACCORDANCE WITH SEISMIC HAZARD LEVEL (SHL) "A", "B", OR "C" OF THE "SEISMIC RESTRAINTS" MANUAL. GUIDELINES FOR MECHANICAL SYSTEMS, DATED 1998, PUBLISHED BY THE SHEET METAL AND AIR CONDITIONING CONTRACTORS NATIONAL ASSOCIATION, INC. (SMACNA) AND IN ACCORDANCE WITH ALL LOCAL CODES.
- ALL HORIZONTAL PIPING MOUNTED UP THE ROOF STRUCTURE OF THE SALES, RECEIVING, GARDEN CENTER CANOPY AND THE DRIVE THRU CANOPY SHALL BE LOCATED ABOVE THE BOTTOM CHORD OF ROOF JOISTS. ROUTE PIPING AND/OR DUCTWORK PARALLEL OR PERPENDICULAR TO JOISTS.
- BUILDING DRAIN, STORM SEWER, FIRE SERVICE, DOMESTIC WATER SERVICE AND GAS UTILITIES BY PLUMBING CONTRACTOR. COORDINATE WITH SITE CONTRACTOR PRIOR TO PIPE INSTALLATION. CONTRACTOR SHALL VERIFY POINT OF CONNECTION TO SITE UTILITY SERVICE PRIOR TO COMMENCING INSTALLATION. CONTRACTOR SHALL ADJUST LOCATION AND DEPTH OF BUILDING SERVICES AS REQUIRED TO CONNECT TO SITE UTILITY SERVICE. CONTRACTOR SHALL MAKE FINAL CONNECTION TO SITE UTILITY SERVICE (UNLESS OTHER PROVISIONS HAVE BEEN MADE). CONTRACTOR'S FAILURE TO PROPERLY COORDINATE SERVICES SHALL NOT BE JUSTIFICATION FOR ANY EXTRA CHARGES.
- ALL WATER PIPING LOCATED IN THE GARDEN CENTER AREA SHALL BE COPPER.
- PLUMBING CONTRACTOR SHALL INSURE THAT ALL PIPING IS TO BE KEPT WITHIN 12" OF ALL DOORS.

## 5 sanitary riser

SCALE | N.T.S.



## 3 g.c. piping elevation

SCALE | N.T.S.

architect + engineer

wd

WD PARTNERS  
7007 DISCOVERY BLVD  
DUBLIN, OH 43017  
614.634.7000 T

WD PARTNERS.COM

project no. | HDPB21180

owner

THE HOME DEPOT  
2455 PACES FERRY ROAD, C-19  
ATLANTA, GA 30339-4024  
PHONE: (770) 433-8211

THE HOME DEPOT  
2455 PACES FERRY ROAD, C-19  
ATLANTA, GA 30339-4024  
PHONE: (770) 433-8211

project info

DORAL, FL  
DORAL, FL  
STORE: 0000

prototype:

4C-2018 | XX/XX/18

issue dates

submission: date  
PERMIT 03/20/18  
BID 04/02/18  
CONSTRUCTION 05/01/00

revisions:  
description date

designed by:  
checked by:

seal

BID SET  
NOT FOR CONSTRUCTION

sheet info

PLUMBING  
SCHEDULES

P6.01