

GENERAL PLUMBING NOTES:

1. DO NOT SCALE DRAWINGS. REFER TO ARCHITECTURAL DRAWINGS AND REFLECTED CEILING PLANS FOR EXACT LOCATIONS OF DOORS, WINDOWS AND CEILING DEVICES. PROJECT IS A NEW STRUCTURE. ROUTE ALL PIPING AND CONDUIT AS INDICATED BUT SO AS NOT TO DEFACE EXTERIOR OF BUILDING. VERIFY EXISTING CONDITIONS PRIOR TO PERFORMING WORK.
2. FURNISH AND INSTALL ALL SYSTEMS OF WASTE AND VENT PIPING, HOT WATER PIPING AND COLD WATER PIPING, INCLUDING ALL FITTINGS, VALVES, ETC., AS REQUIRED.
3. FURNISH AND INSTALL ALL PLUMBING FIXTURES AND EQUIPMENT AS SHOWN ON THE DRAWINGS.
4. PROVIDE SHUT-OFF VALVES AT EACH FIXTURE.
5. ALL PLUMBING PIPING SHALL BE CONCEALED WITHIN THE BUILDING STRUCTURE AND ABOVE DROP CEILINGS.
6. ALL HOT AND COLD WATER PIPING ABOVE DROP CEILINGS SHALL BE INSULATED WITH 1/2" THICK FIBERGLASS PIPE INSULATION.
7. HOT AND COLD WATER PIPING SHALL BE TYPE 'L' COPPER.
8. CLEANDOUTS SHALL BE INSTALLED IN ACCORDANCE WITH PLUMBING CODE REQUIREMENTS AT EACH CHANGE IN DIRECTION. CLEANDOUTS SHALL BE PLACED IN READILY ACCESSIBLE LOCATIONS.
9. THE PLUMBING CONTRACTOR SHALL COORDINATE WITH THE HVAC AND ELECTRICAL DIVISIONS TO AVOID INTERFERENCE WITH TRADES.

PLUMBING SYMBOL LEGEND

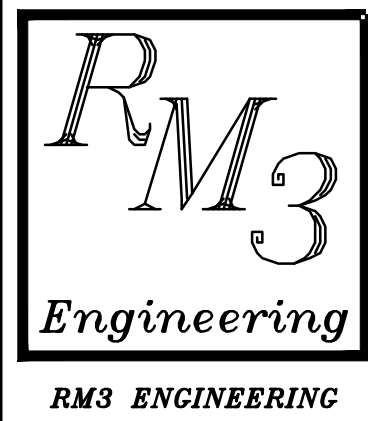
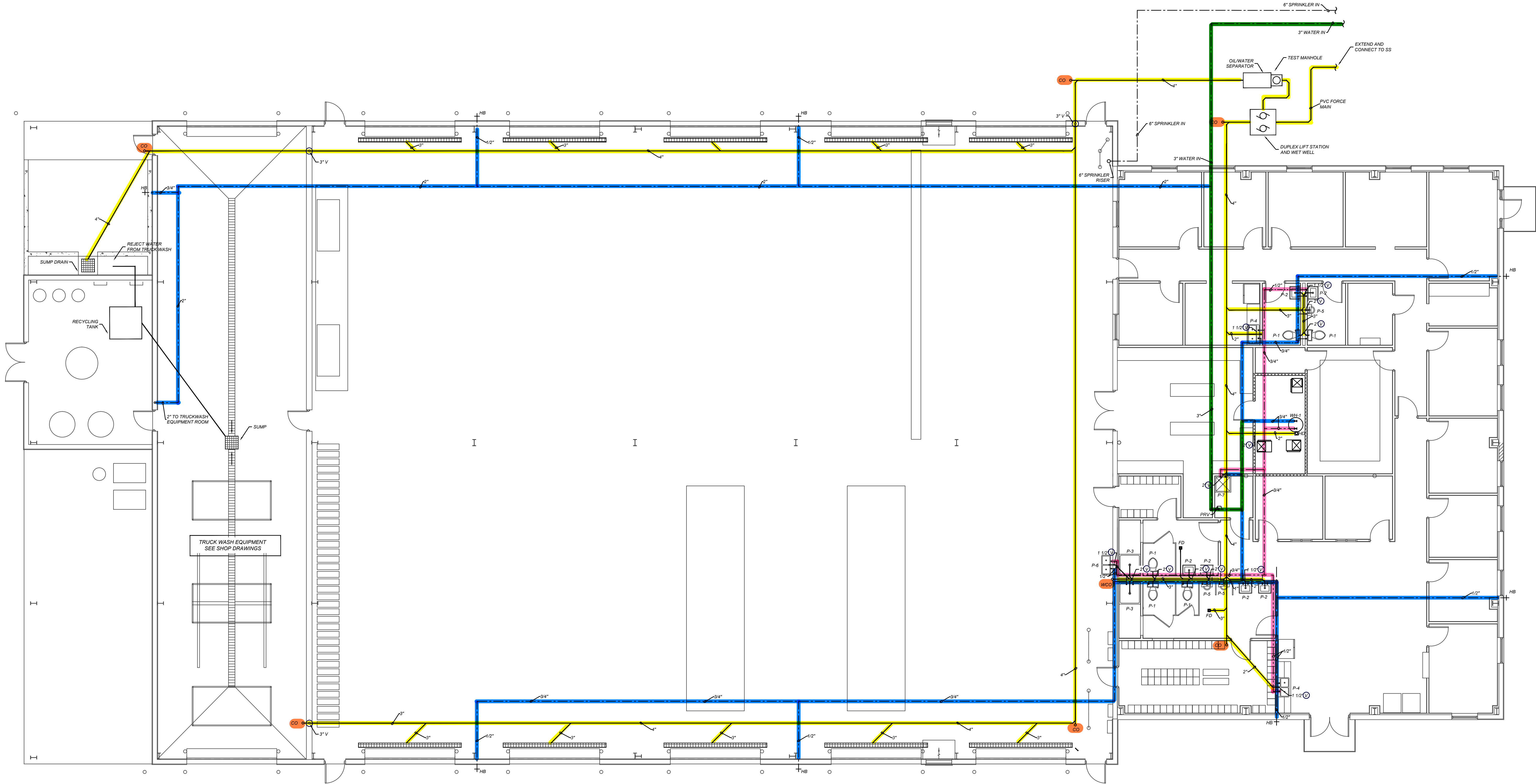
- VTR VENT THRU ROOF  
○ CO CLEANOUT  
⊗ FD FLOOR DRAIN  
--- VENT  
--- WASTE  
--- COLD WATER  
--- HOT WATER  
⊕ LOW PRESSURE GAS  
Ⓐ COMPRESSED AIR

PLUMBING FIXTURE SCHEDULE

MARK	HOT WATER	COLD WATER	VENT	WASTE	REMARKS
P-1	-	1/2"	2"	3"	WATER CLOSET
P-2	1/2"	1/2"	1 1/4"	1 1/2"	LAVATORY
P-3	1/2"	1/2"	1 1/2"	2"	SHOWER
P-4	1/2"	1/2"	1 1/2"	2"	KITCHEN SINK
P-5	1/2"	-	1 1/2"	2"	URINAL
P-6	1/2"	1/2"	2"	2"	SHOP
P-7	1/2"	1/2"	2"	2"	MDP SINK
FD	-	-	-	3"	FLOOR DRAIN
HB	-	1/2"	-	-	HOSE BIBB
HD	-	-	1 1/2"	2"	HUB DRAIN
WF	-	1/2"	1 1/4"	1 1/2"	WATER FOUNTAIN

GAS WATER HEATERS

MARK	STORAGE GALLONS	RECOVERY	FIRST HOUR RATING	GAS INPUT BTU/HR	THERMAL EFFICIENCY	CONNECTIONS COLD HOT	MODEL*	NOTES
WH	60	95 GPH @ 90 F	124 GAL	76,000	0.95	3/4" 3/4"	A.D.SMITH GPHE-50	1



2302 Brockett Road  
Tucker, Georgia  
30084  
770 934 0944  
770 934 0945

PLUMBING PLAN

WASTE MANAGEMENT  
HAULING FACILITY  
HIGHWAY 17  
HARDEEVILLE, SC

NO.	REVISIONS

DATE: 11/1/2017  
PROJECT No. 3E17-068